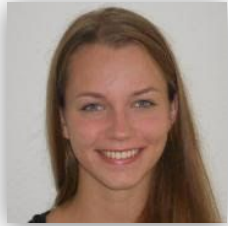


# Discussion Session I



Sophie Lund Schrøder  
(Dark, U. of Copenhagen → IAS)



Selma E. de Mink  
(Max Planck inst. for Astrophysics, MPA)

## Orbital Evolution I 'Stellar Processes'

# Star- and Planet formation



This Session

# Super massive Black Holes

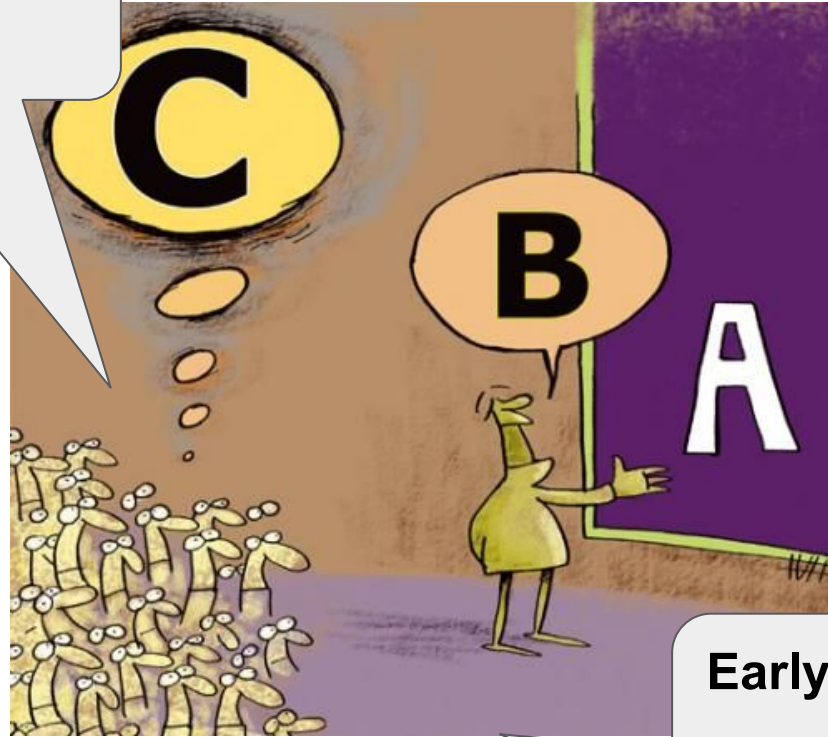


Broad topics

- Inside-Out disks
- Role of stellar processes
- .... Anything raised by the speakers

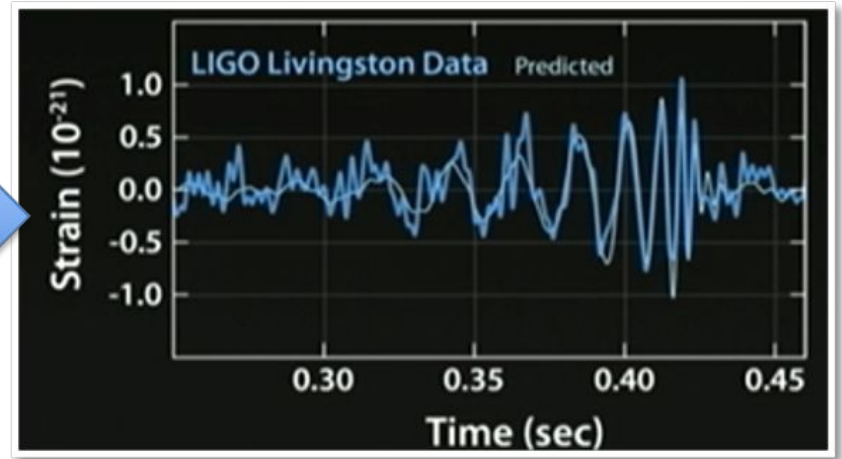
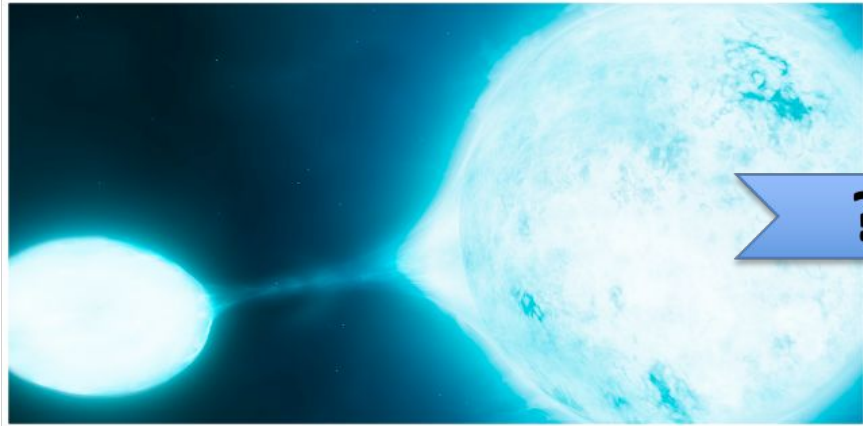


**Feel encouraged to  
ask clarifying  
questions**



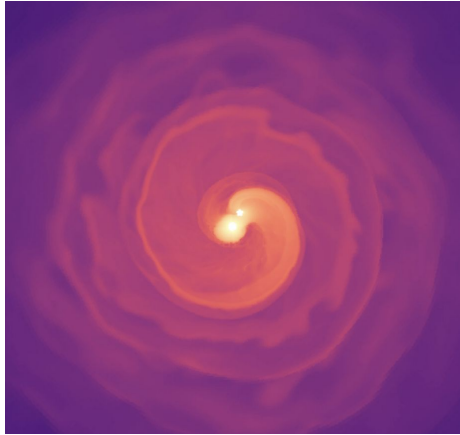
**Early career researchers  
are explicitly  
encouraged**

# One motivation

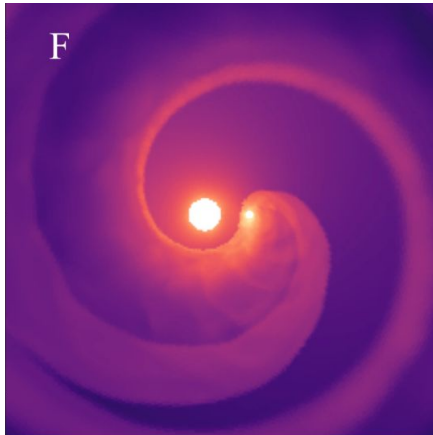


# Example of inside out feeding

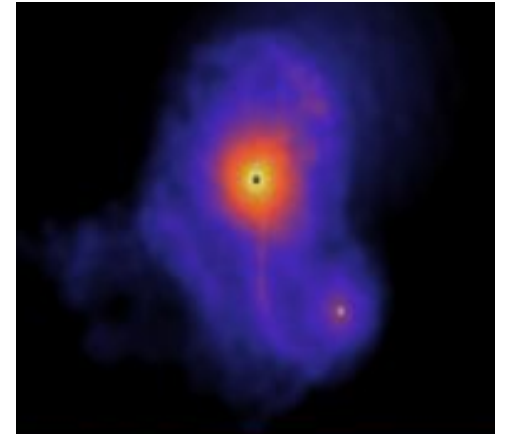
Common envelope



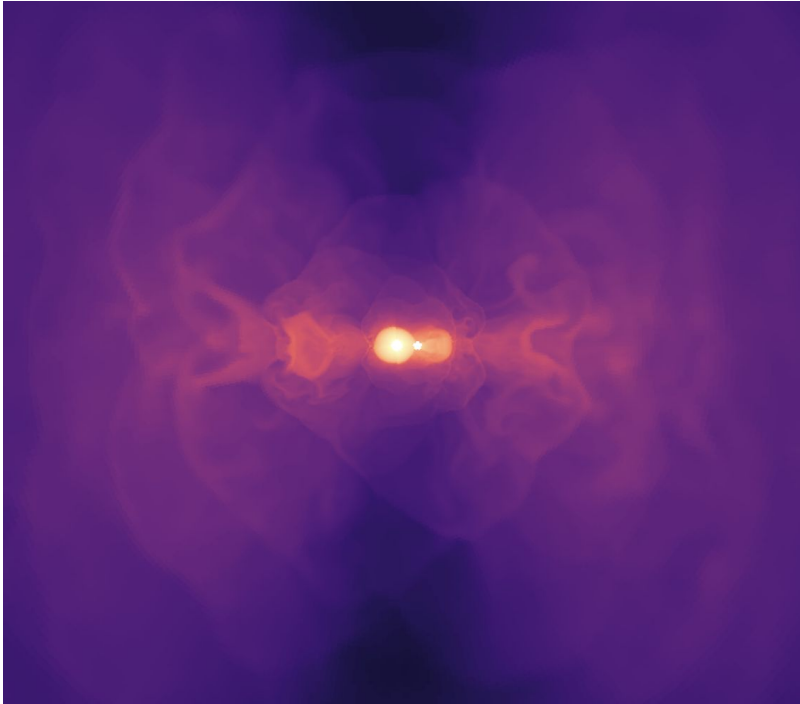
Wind



Supernova



# “Outside in” vs “inside out”



M. MacLeod et al. 2018

## Possible Topics:

- Are “inside-out” circumbinary disks fundamentally different from outside in disks?
- Accretion versus Excretion?
- Is  $da/dt > 0$  for inside-out disk?
- Role of stellar feedback (stellar radiation, winds)
- Misalignment? Eccentricities?
- Diversity of feeding mechanisms
- Observational Constraints