

## Courtship and mating in *C. elegans*

Vlad Susoy  
Vivek Venkatachalam  
Mei Zhen, Toronto



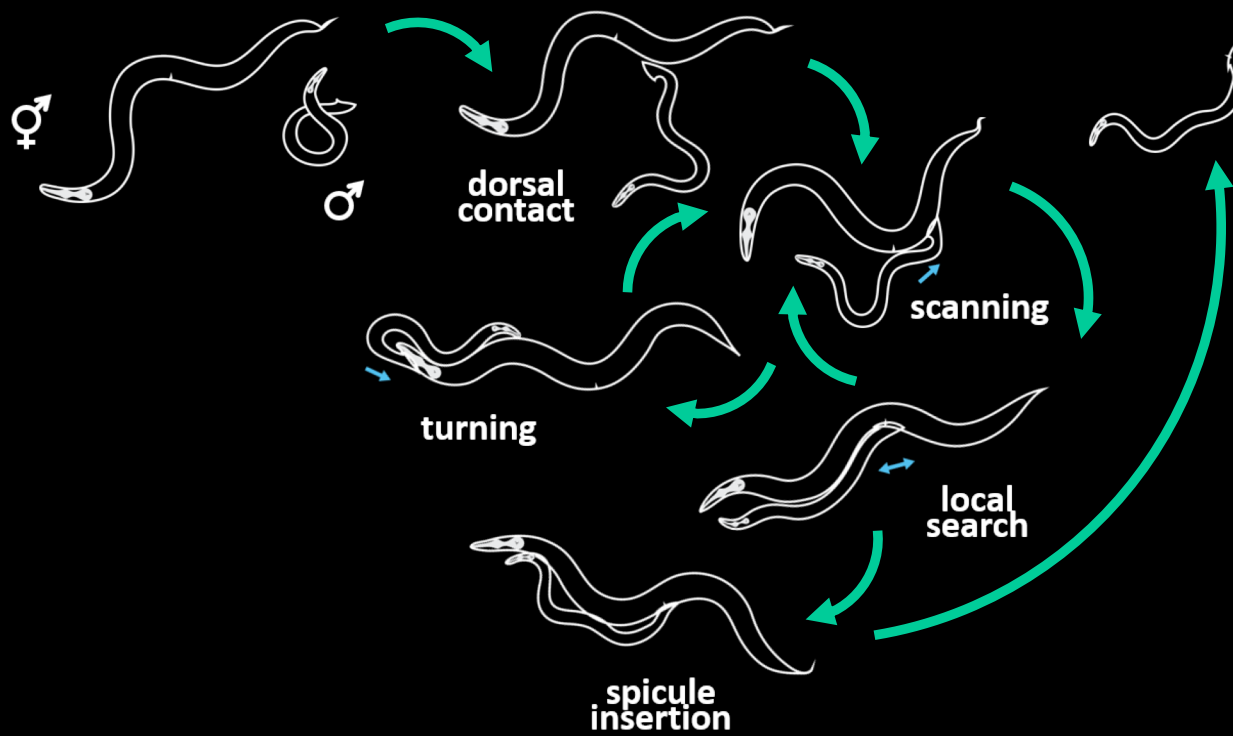
**Complex, continuous, naturalistic, and  
goal-directed social behavior**



Attraction

Mating

Rest



## Nervous system of *C. elegans* is sexually-dimorphic

hermaphrodite



**302** neurons  
(8 sex-specific)

male



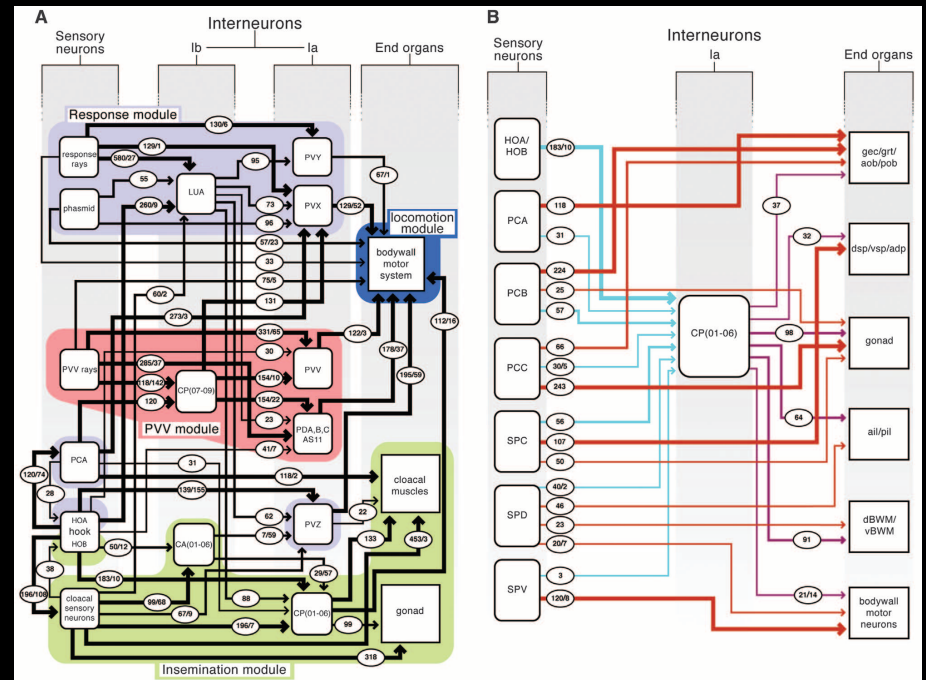
**385** neurons  
(93 sex-specific)



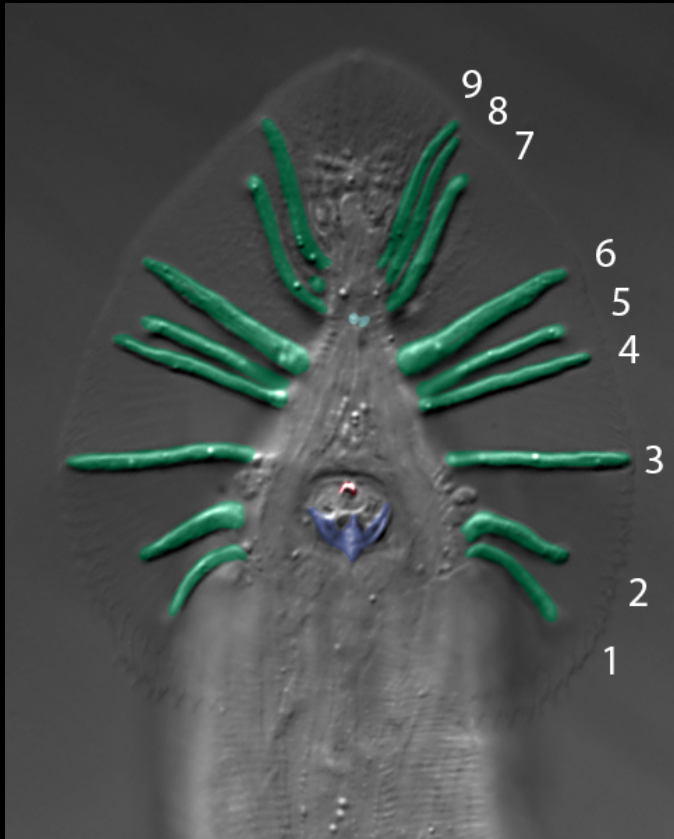
# The Connectome of a Decision-Making Neural Network

Travis A. Jarrell,<sup>1\*</sup> Yi Wang,<sup>1\*</sup> Adam E. Bloniarz,<sup>1†</sup> Christopher A. Brittin,<sup>1</sup> Meng Xu,<sup>1</sup> J. Nichol Thomson,<sup>2</sup> Donna G. Albertson,<sup>2‡</sup> David H. Hall,<sup>3</sup> Scott W. Emmons<sup>1,3§</sup>

In order to understand the nervous system, it is necessary to know the synaptic connections between the neurons, yet to date, only the wiring diagram of the adult hermaphrodite of the nematode *Caenorhabditis elegans* has been determined. Here, we present the wiring diagram of the posterior nervous system of the *C. elegans* adult male, reconstructed from serial electron micrograph sections. This region of the male nervous system contains the sexually dimorphic circuits for mating. The synaptic connections, both chemical and gap junctional, form a neural network with four striking features: multiple, parallel, short synaptic pathways directly connecting sensory neurons to end organs; recurrent and reciprocal connectivity among sensory neurons; modular substructure; and interneurons acting in feedforward loops. These features help to explain how the network robustly and rapidly selects and executes the steps of a behavioral program on the basis of the inputs from multiple sensory neurons.



## Male-specific sensilla of the tail



Rays 36

Hook 2

Post cloacal sensilla 6

Spicule sensilla 6

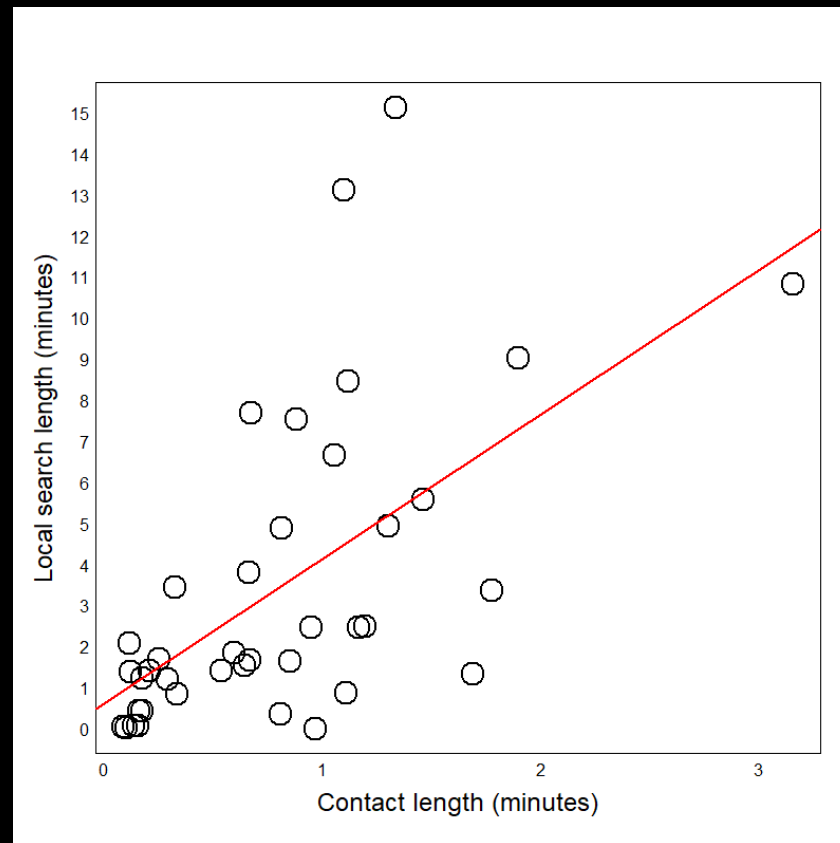


## Contact with a mating partner temporary changes the search strategy

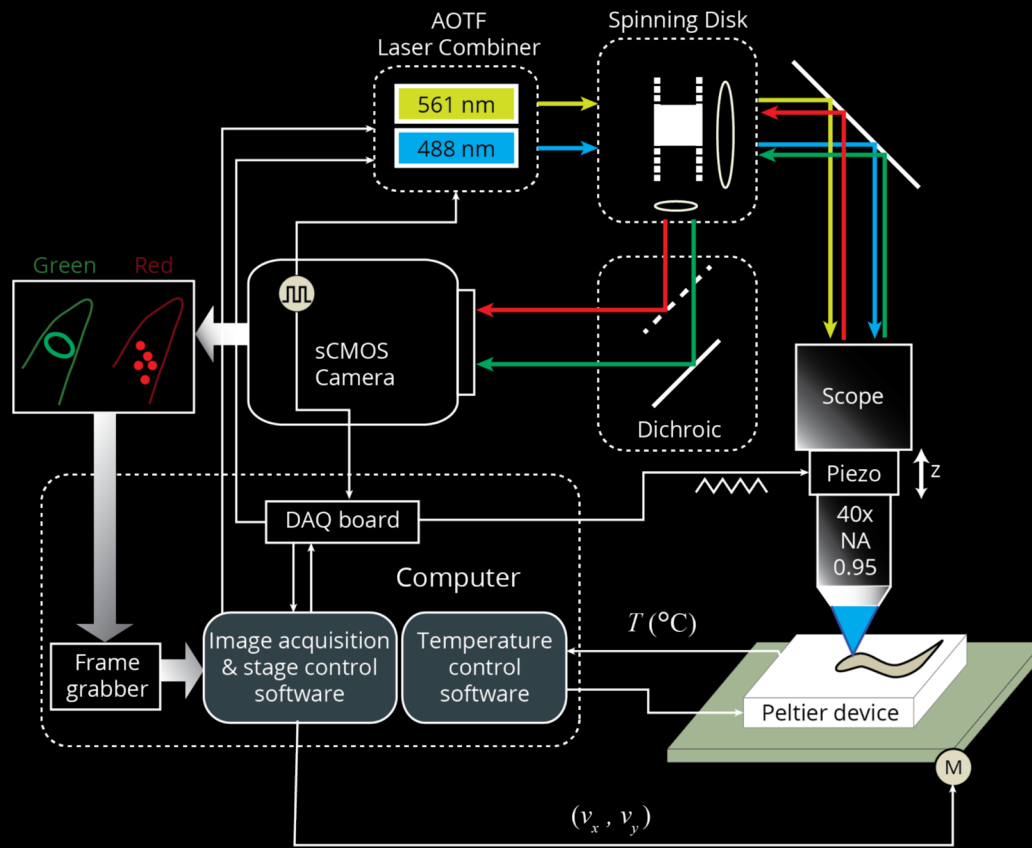
hermaphrodite N2  
male N2



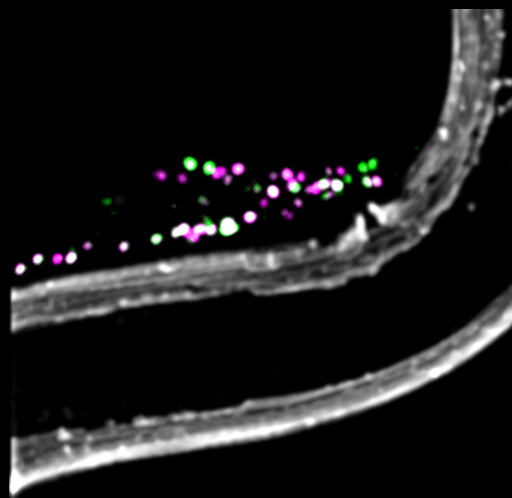
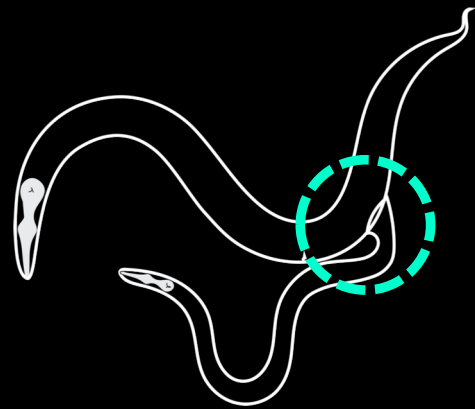
## Local search length correlates with the contact length



# Whole brain multicolor imaging in behaving animals



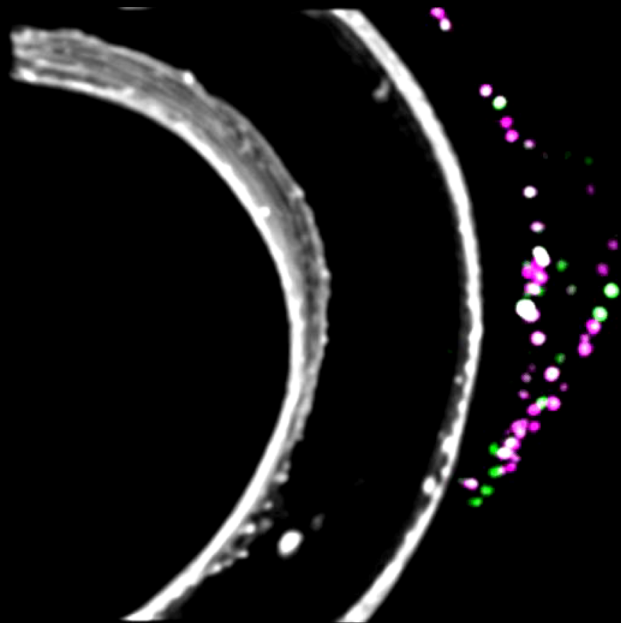
## Multi-neuronal imaging of *C. elegans* mating



**GCaMP6**  
**mNeptune**

**mCherry**

## Multi-neuronal imaging of *C. elegans* mating

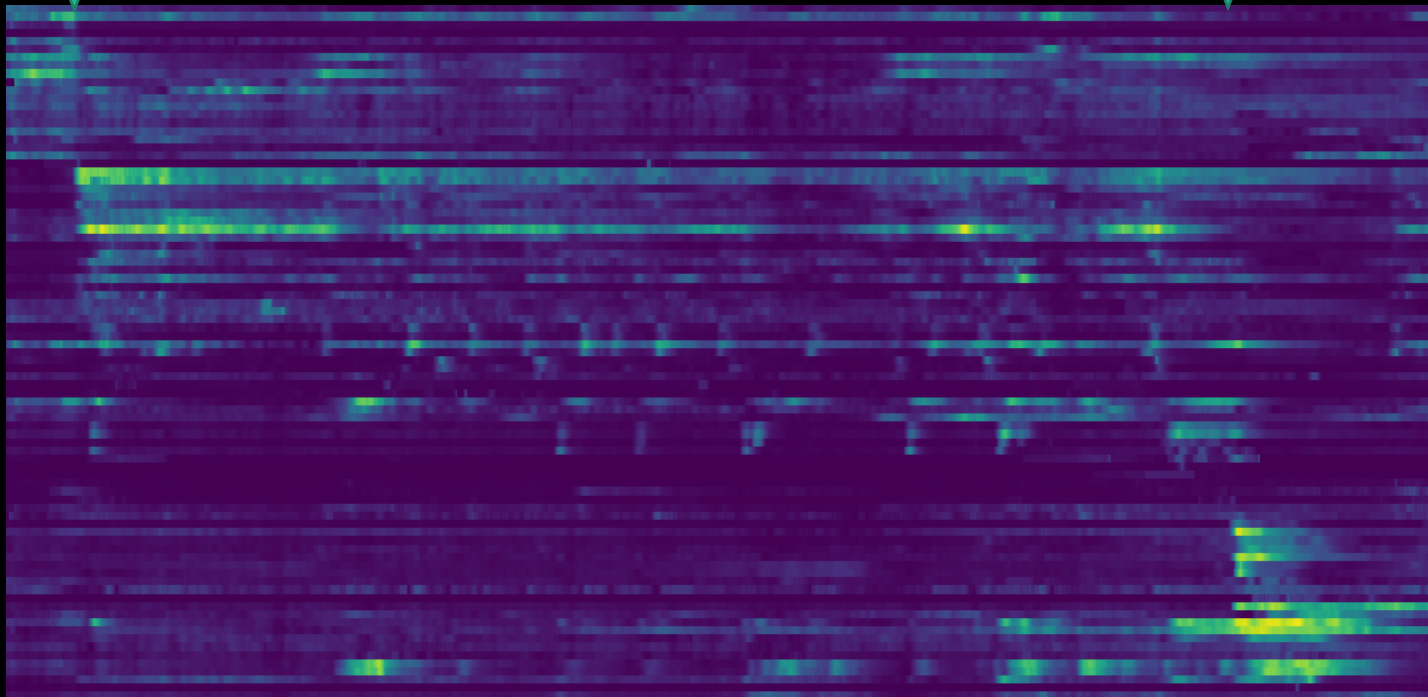


## Neuronal traces from a 10-min-long mating movie

response  
to contact

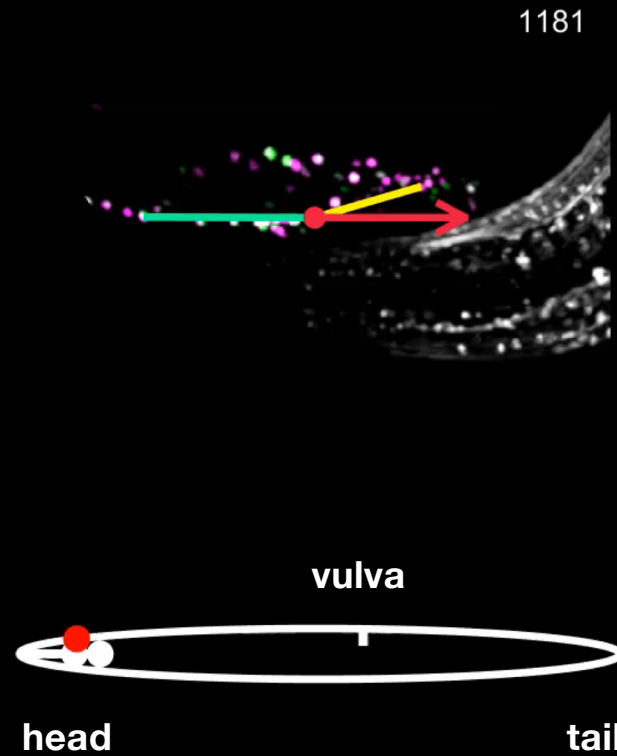


sperm  
release

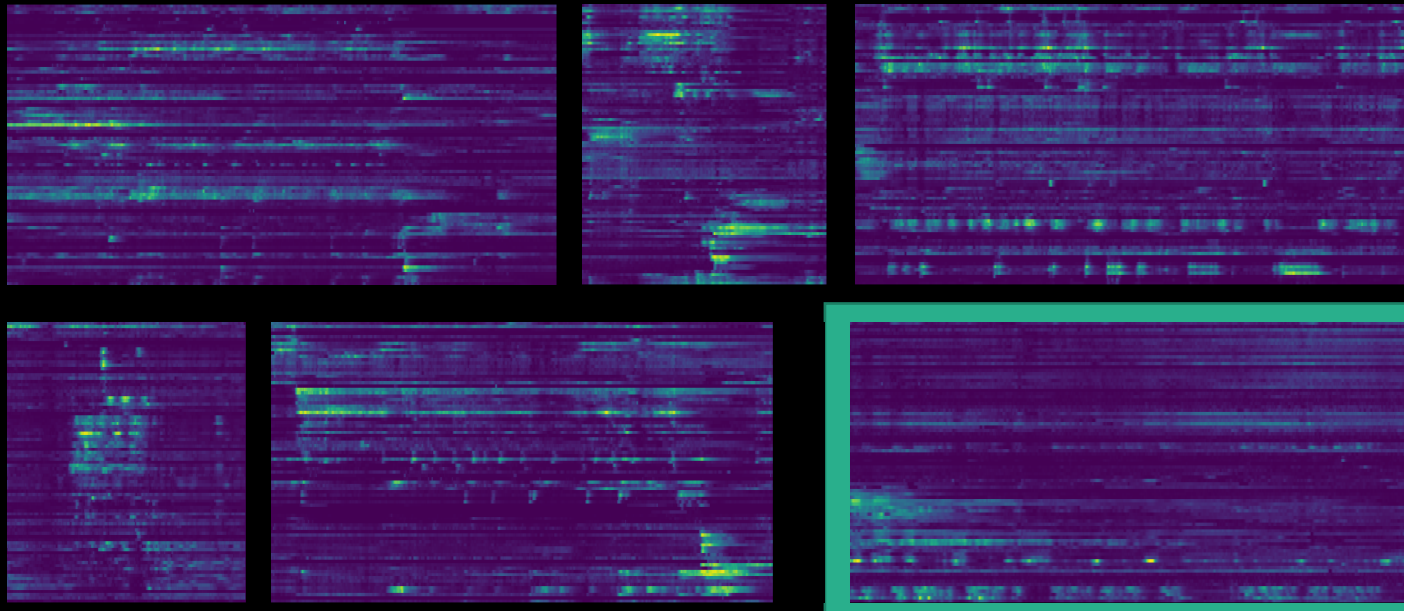




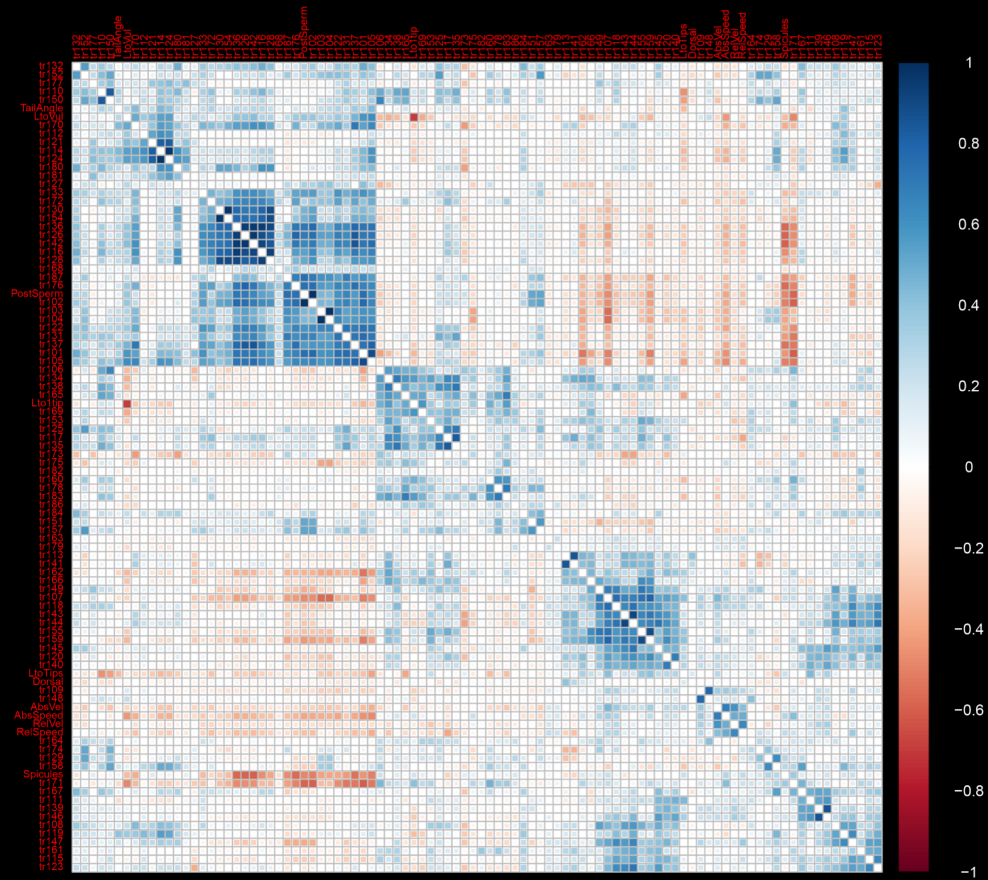
## Behavior and sensory environment are recorded



**Neuronal traces from different individuals  
spanning 50 minutes of worm mating**

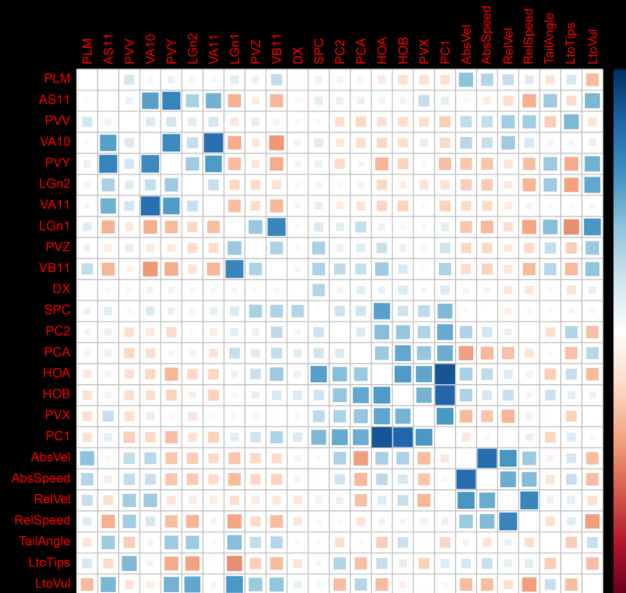


# Cross correlations between neuronal and behavioral time series for one mating



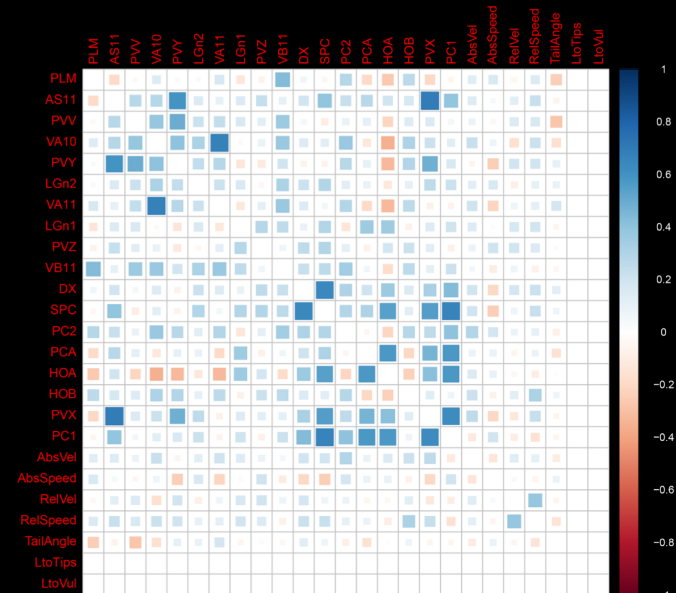
# Averaged cross correlations for a subset of neurons across 5 datasets

## Mating



n=5

## Before / after mating

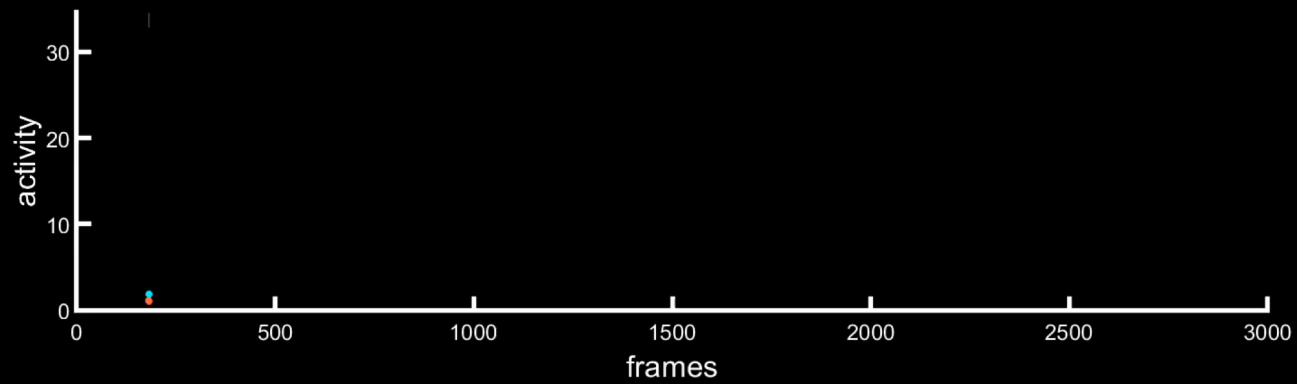


n=5

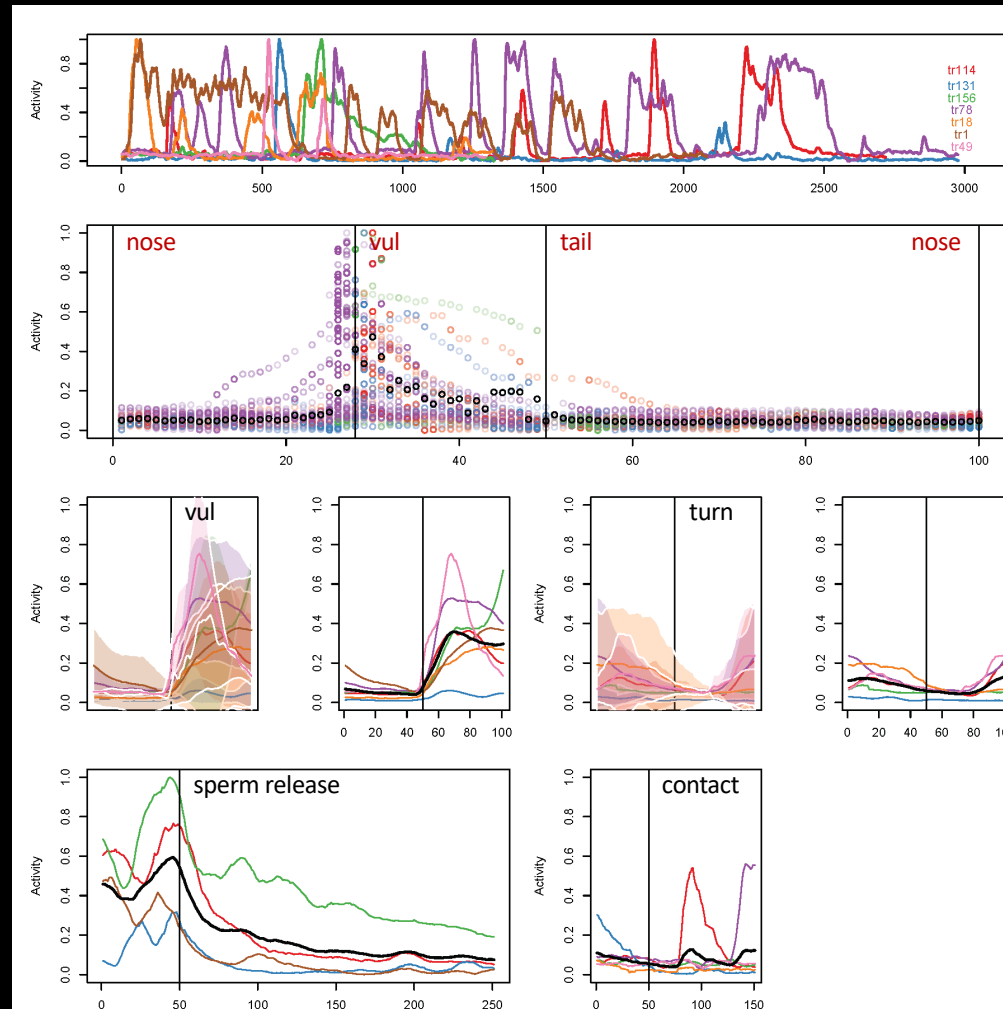
# PCB and PCC become active in the proximity of the vulva



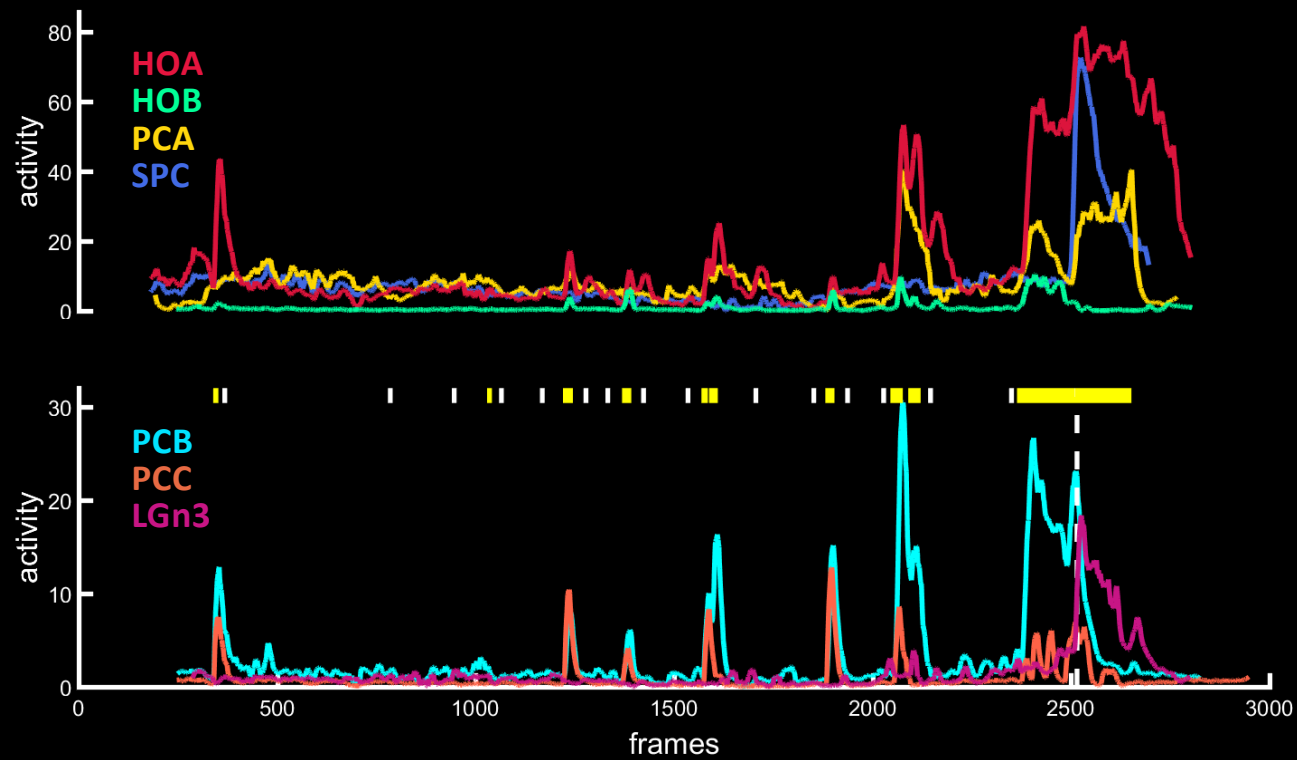
| turn | vul -- sperm release



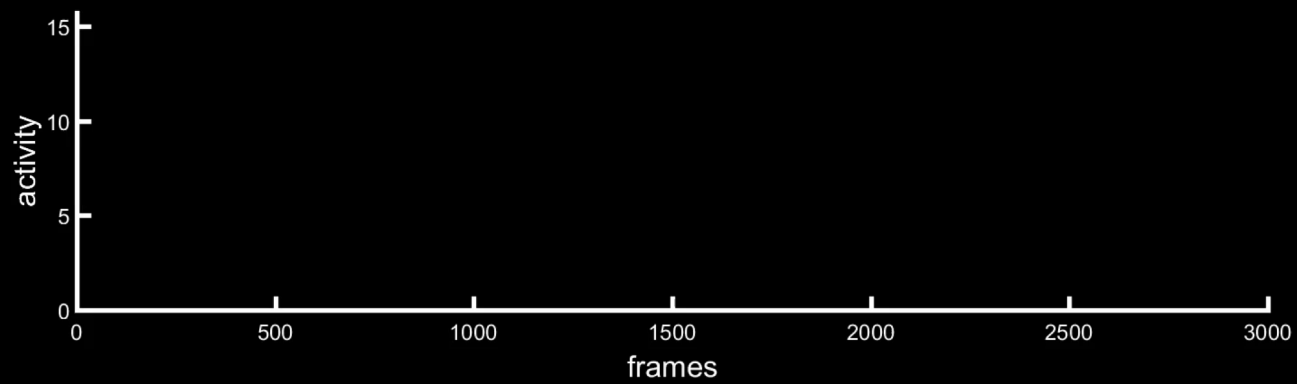
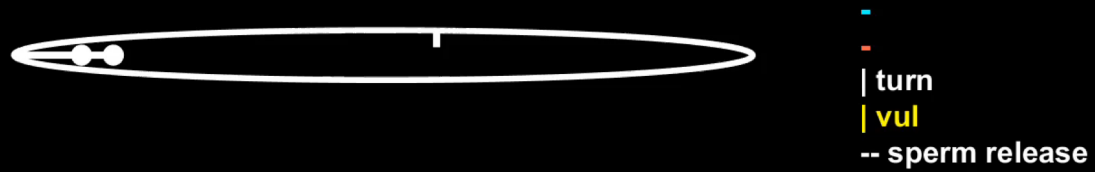
# PCs activation coincides with vulva detection



## PCB, PCC, and HOB inhibition coincides with the onset of sperm release

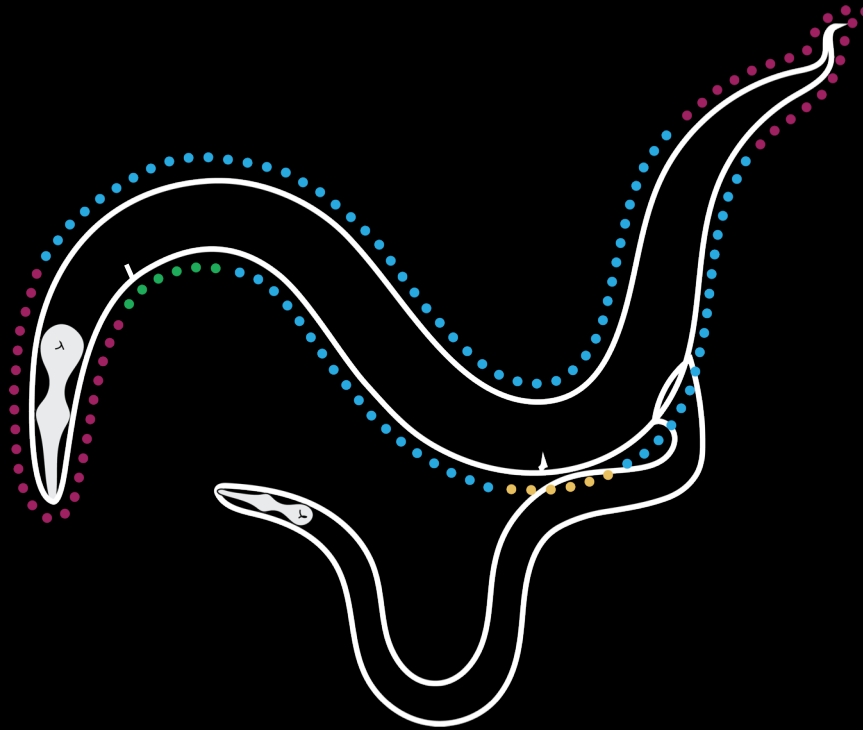


## Some neurons become active exclusively when the tail is on the anterior ventral side





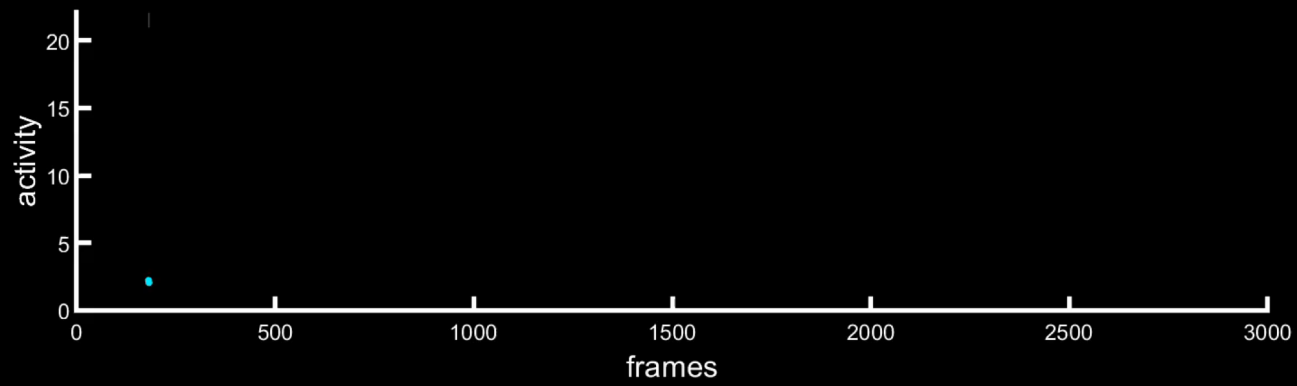
**Excretory pore secretions may represent a male-guiding cue**



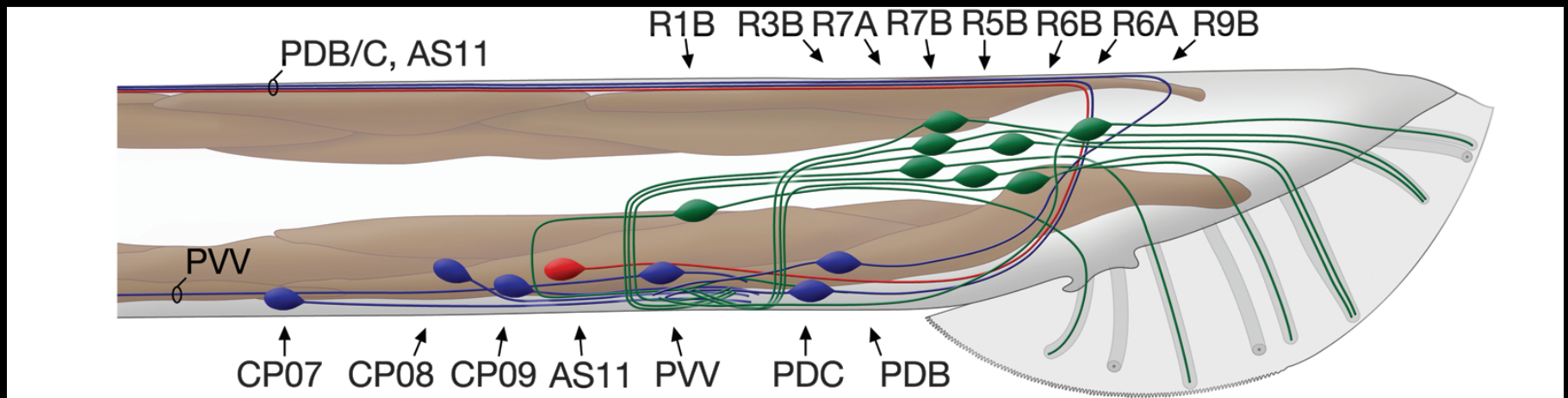
## PVV activation coincides with turns



| turn | vul -- sperm release

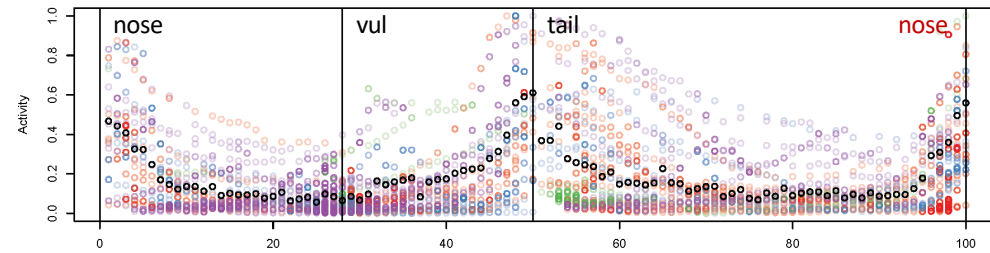
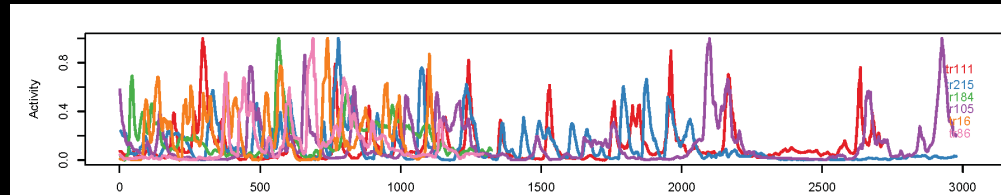


# PVV module

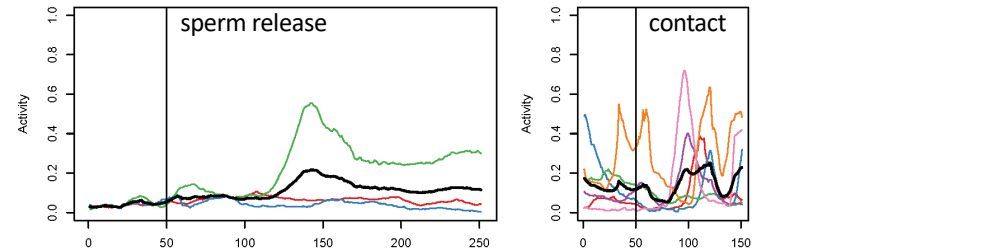
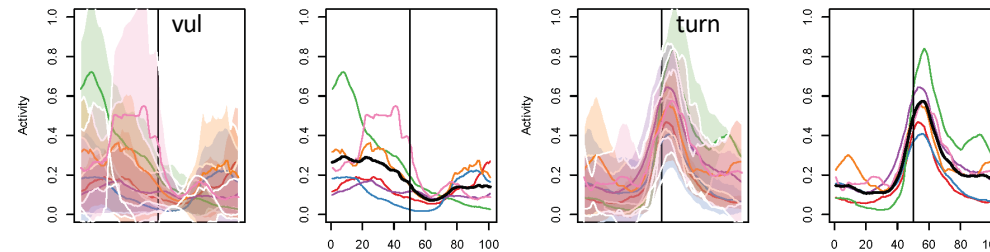


# PVV activation coincides with turns

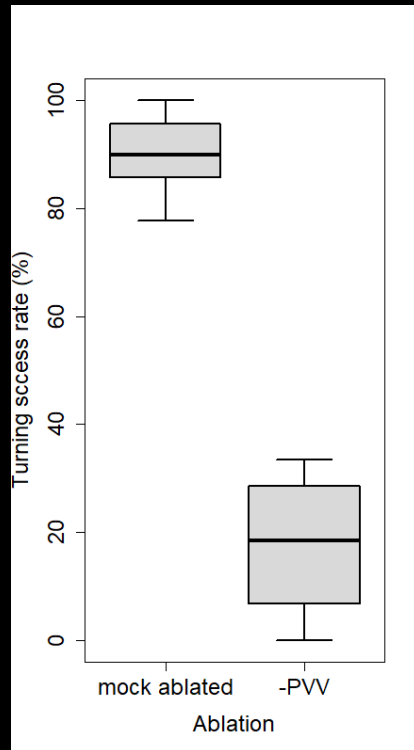
Activity along hermaphrodite body:



Activity aligned to events:



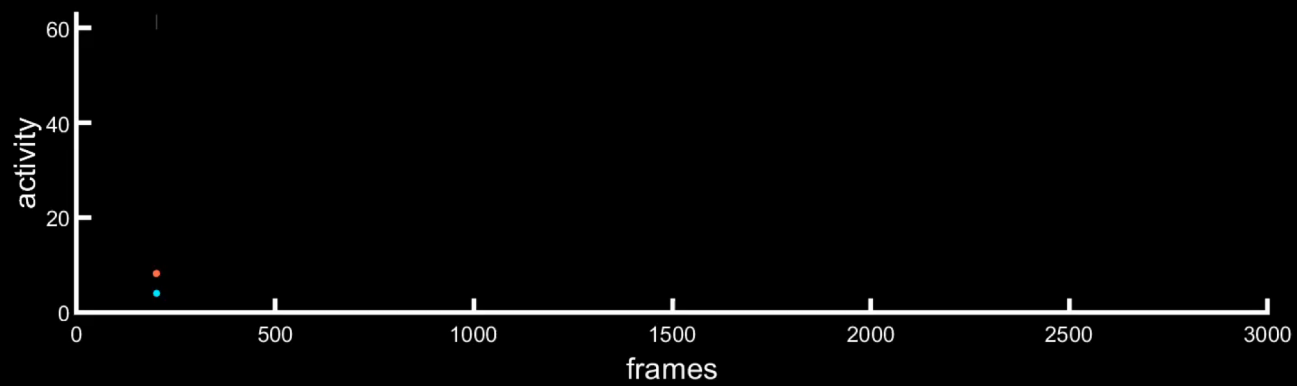
## Ablation of PVV compromises turning



## PVY and an LG neuron are anticorrelated



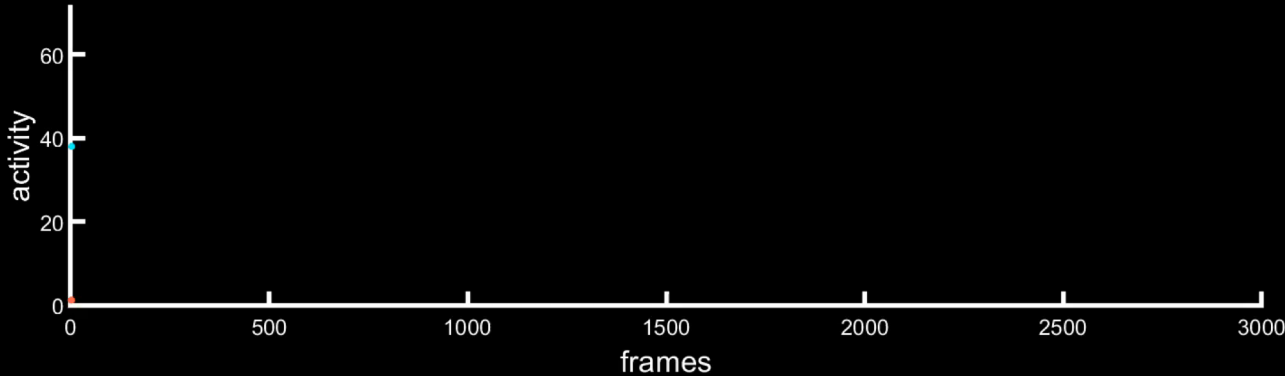
| turn | vul -- sperm release



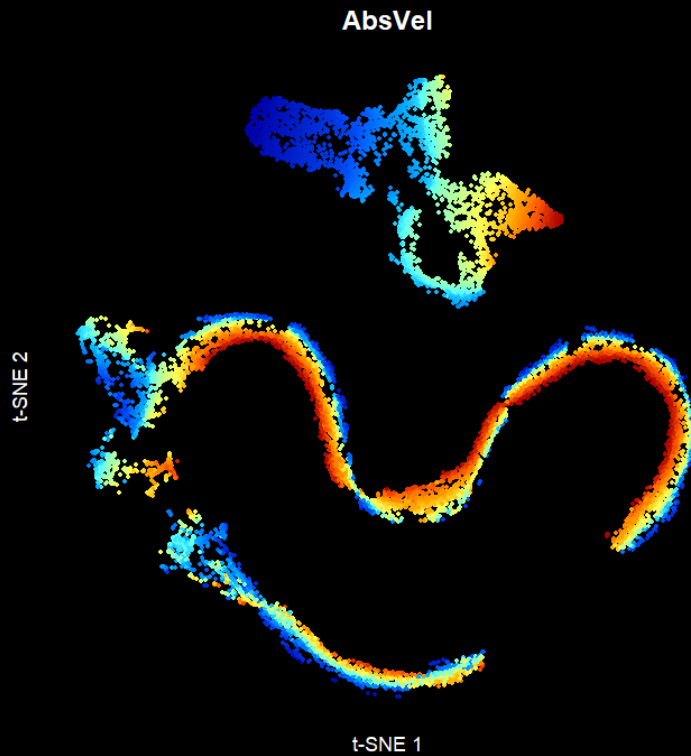
# Correlation between PVY and LGn1 is state-dependent



| turn | vul -- sperm release



## t-SNE embedding of feature series

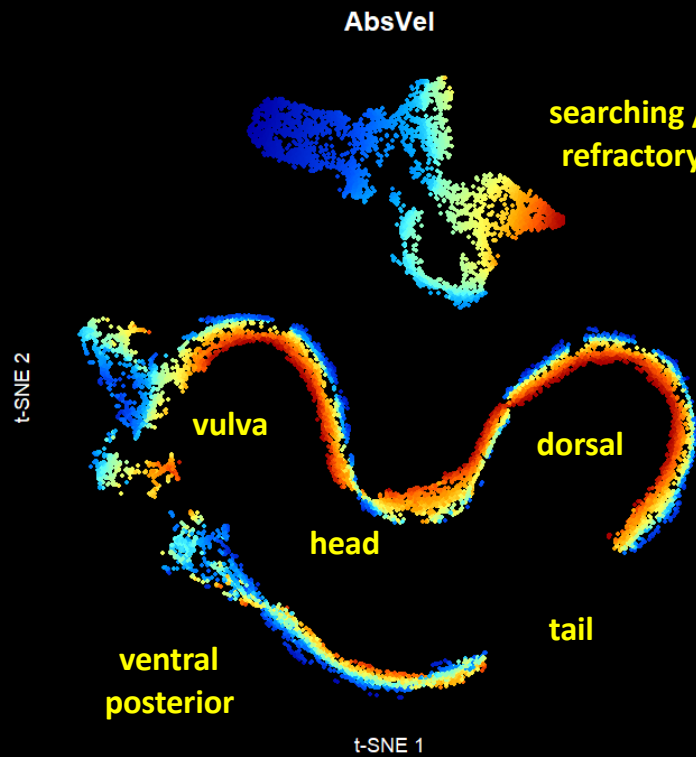


### Time series used:

- Absolute velocity
- Relative velocity
- Position on the hermaphrodite
- Tail curvature
- Distance to vulva
- Distance to tips



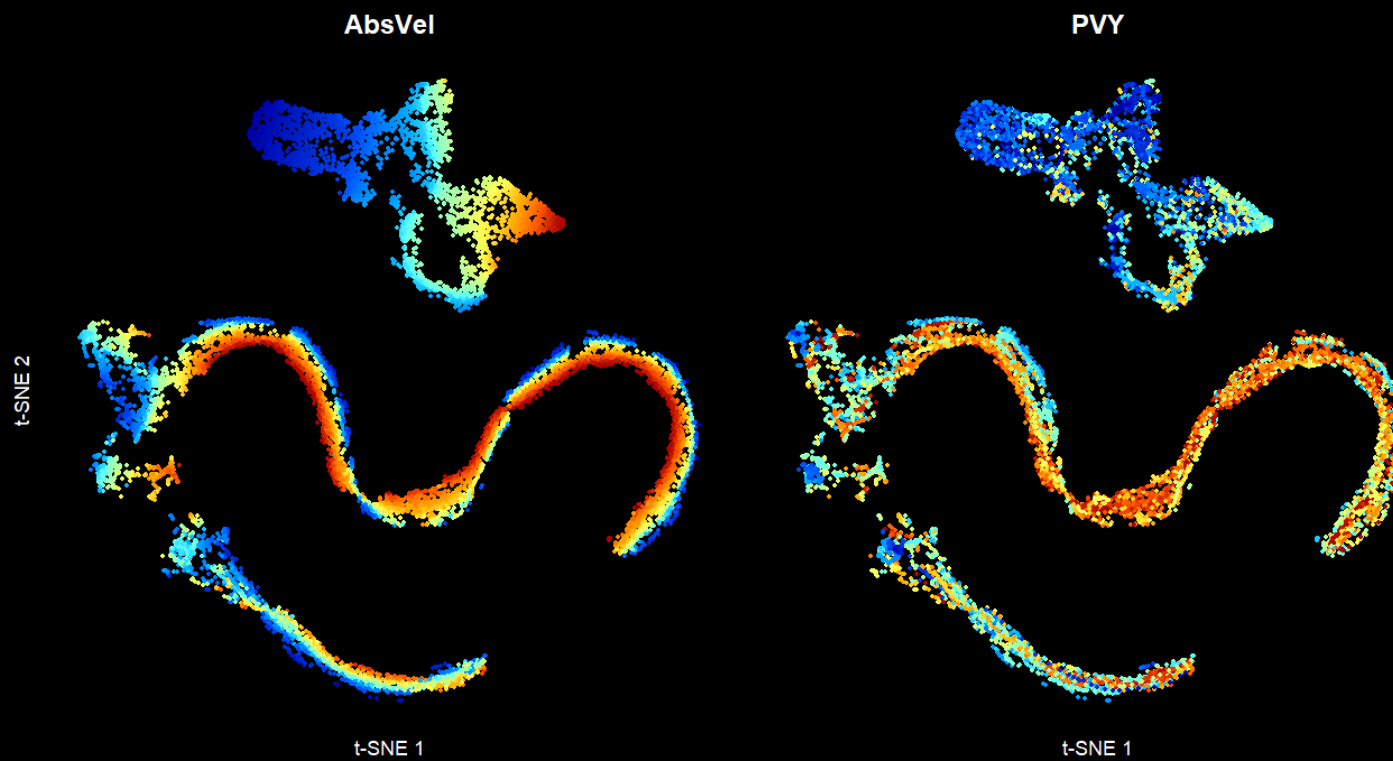
## t-SNE embedding of feature series

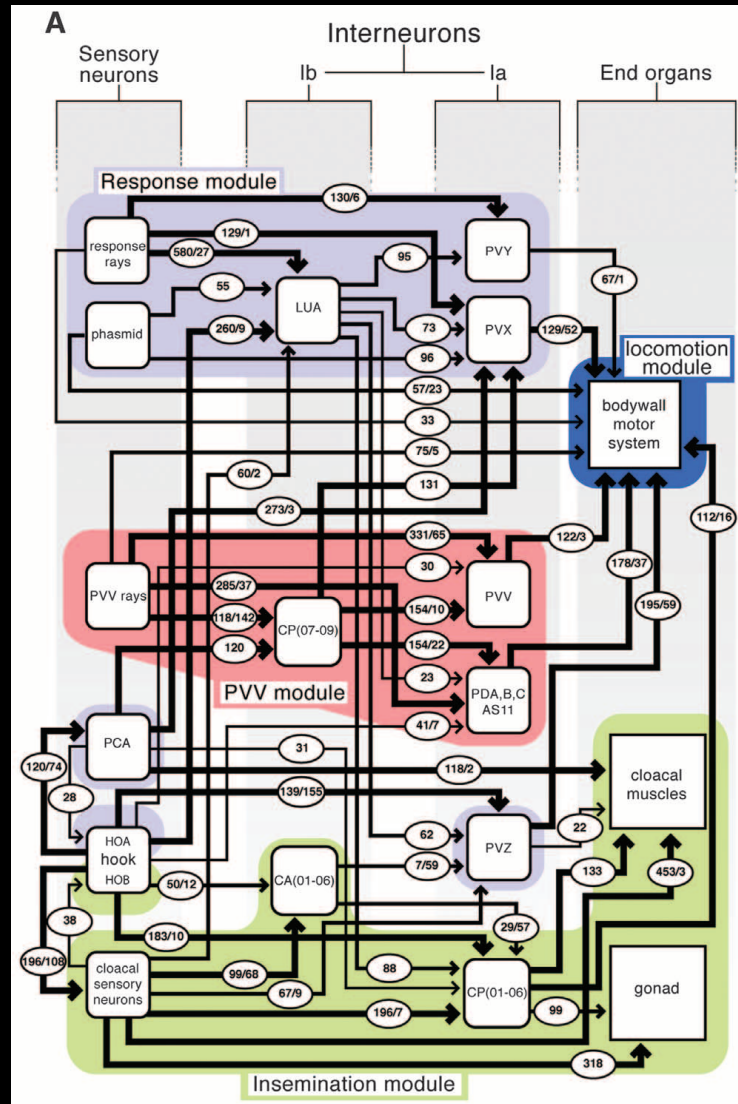


### Time series used:

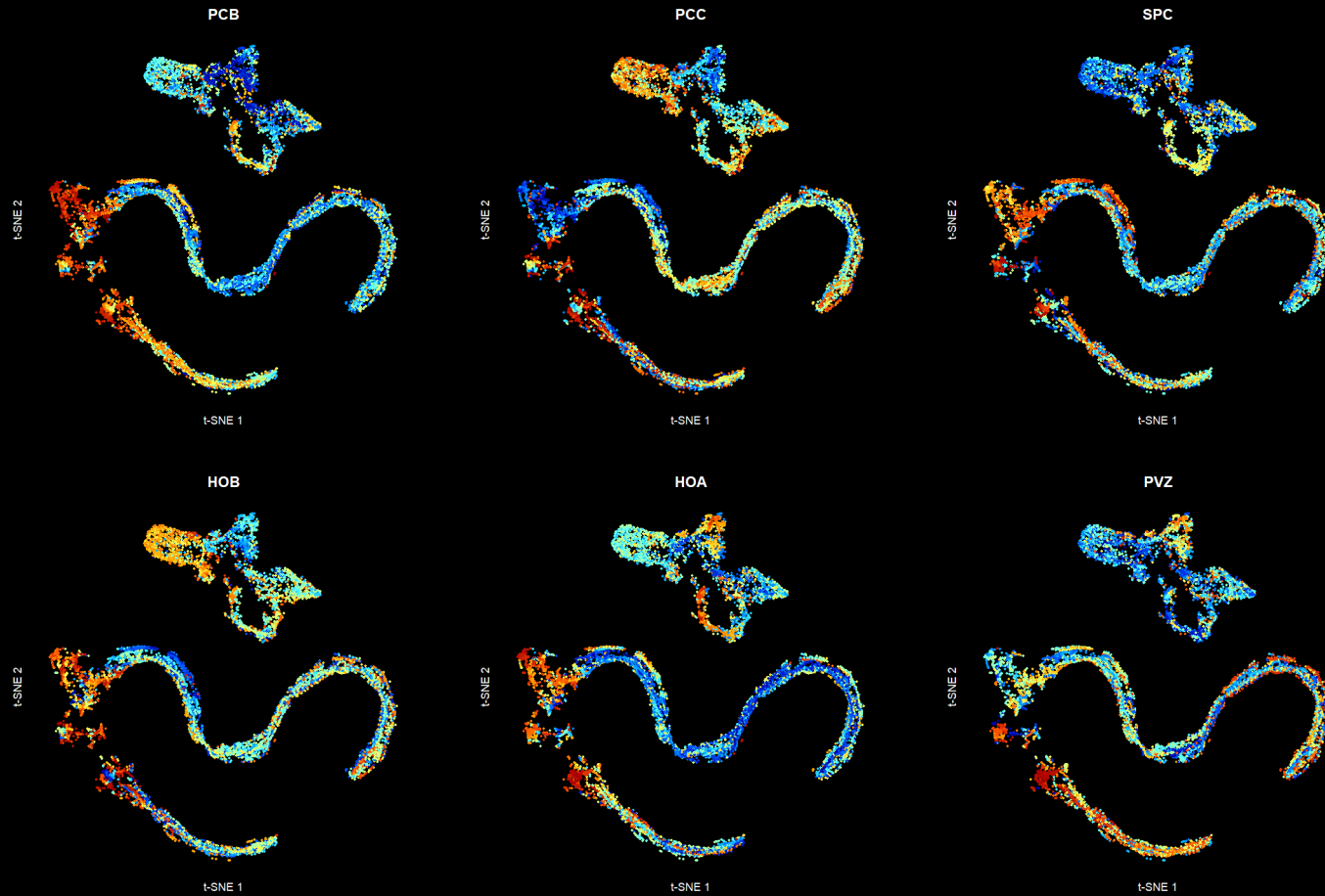
- Absolute velocity
- Relative velocity
- Position on the hermaphrodite
- Tail curvature
- Distance to vulva
- Distance to tips

# Mapping neuronal activity to behavioral space

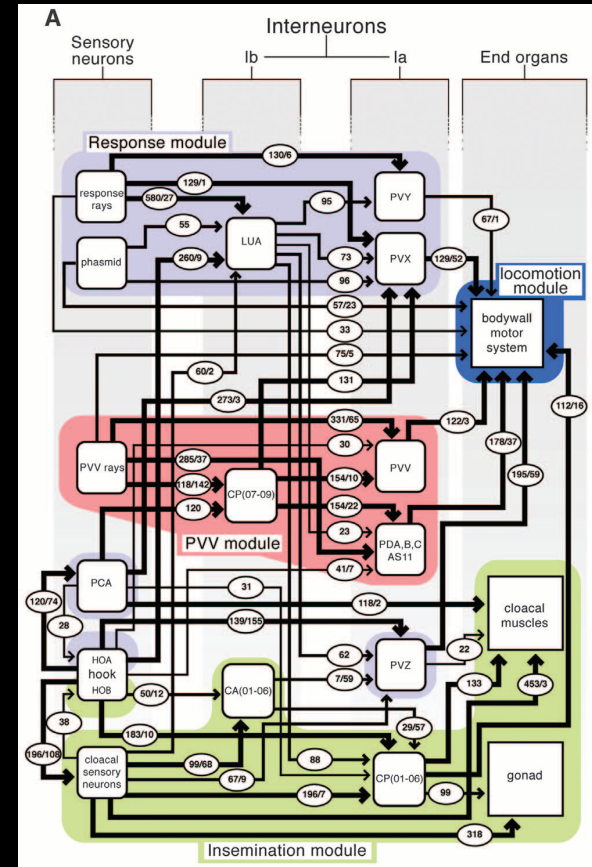
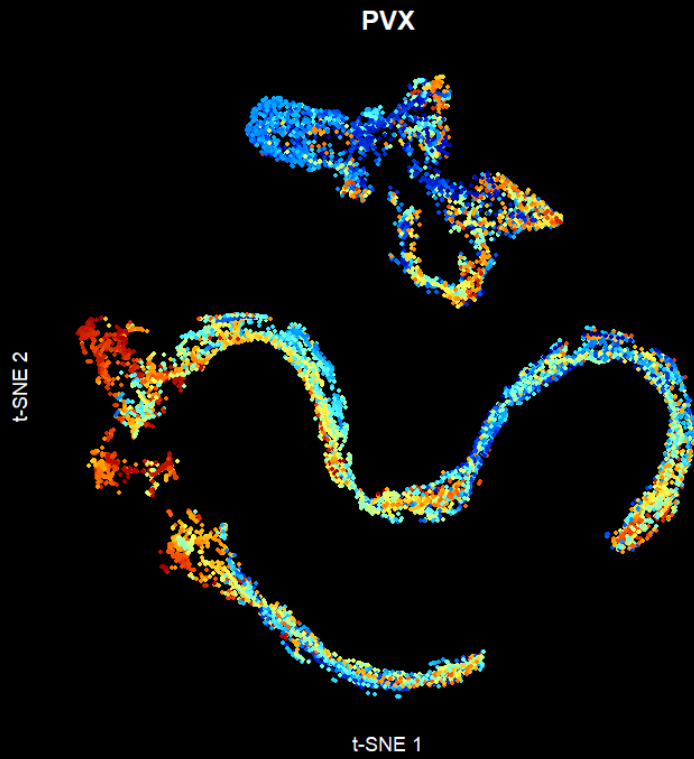




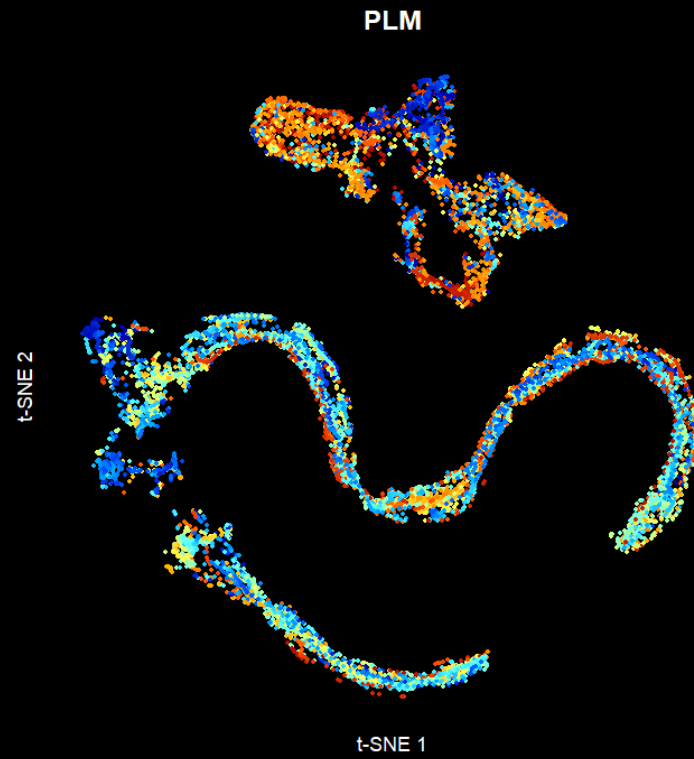
# Subset of neurons mediating vulva detection and mating



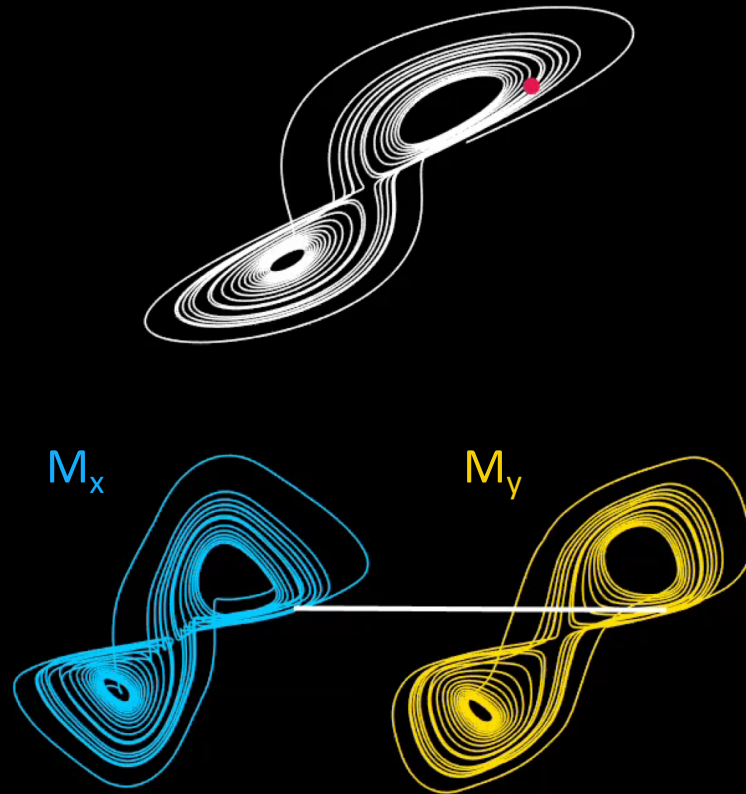
# PVX is active near the vulva



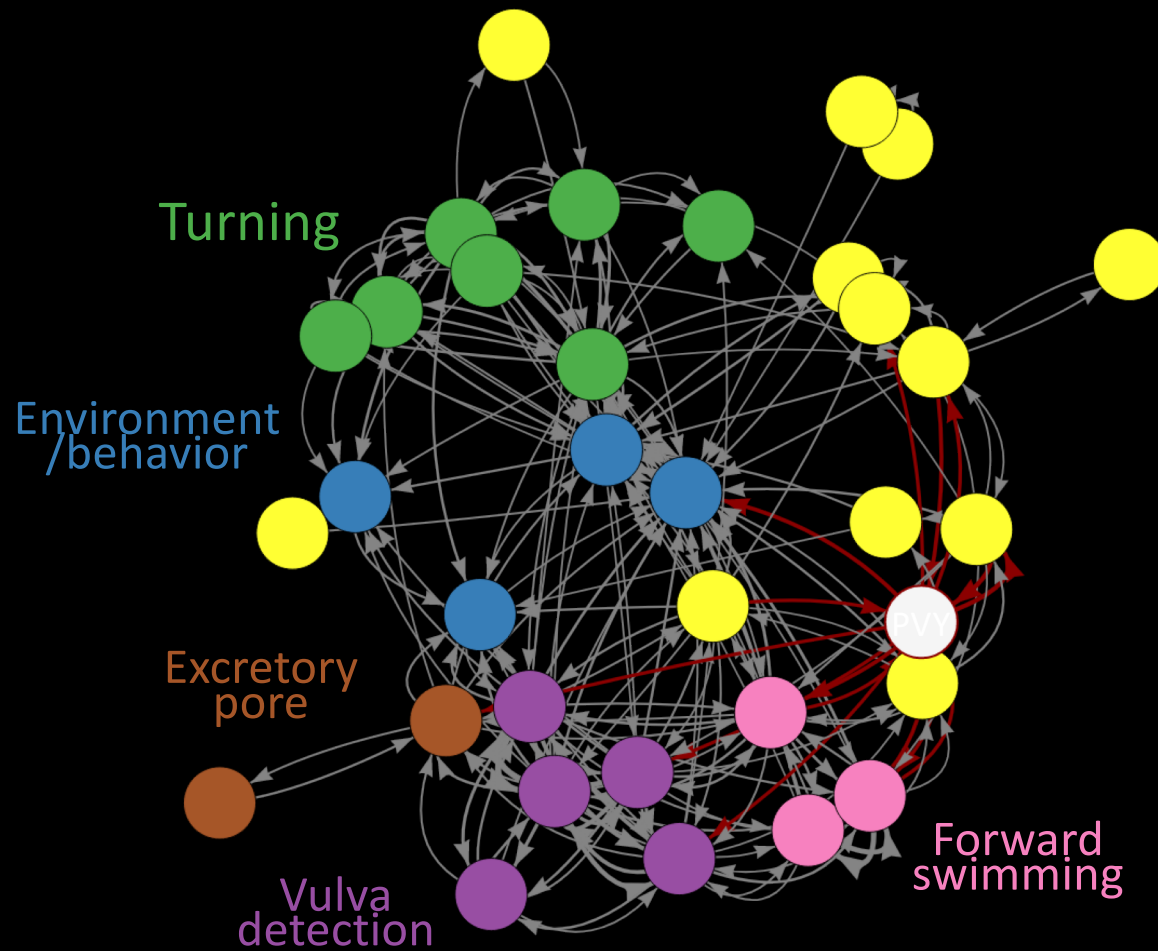
# PLM is mostly active when the male is not mating



## Identifying interactions using convergent cross mapping

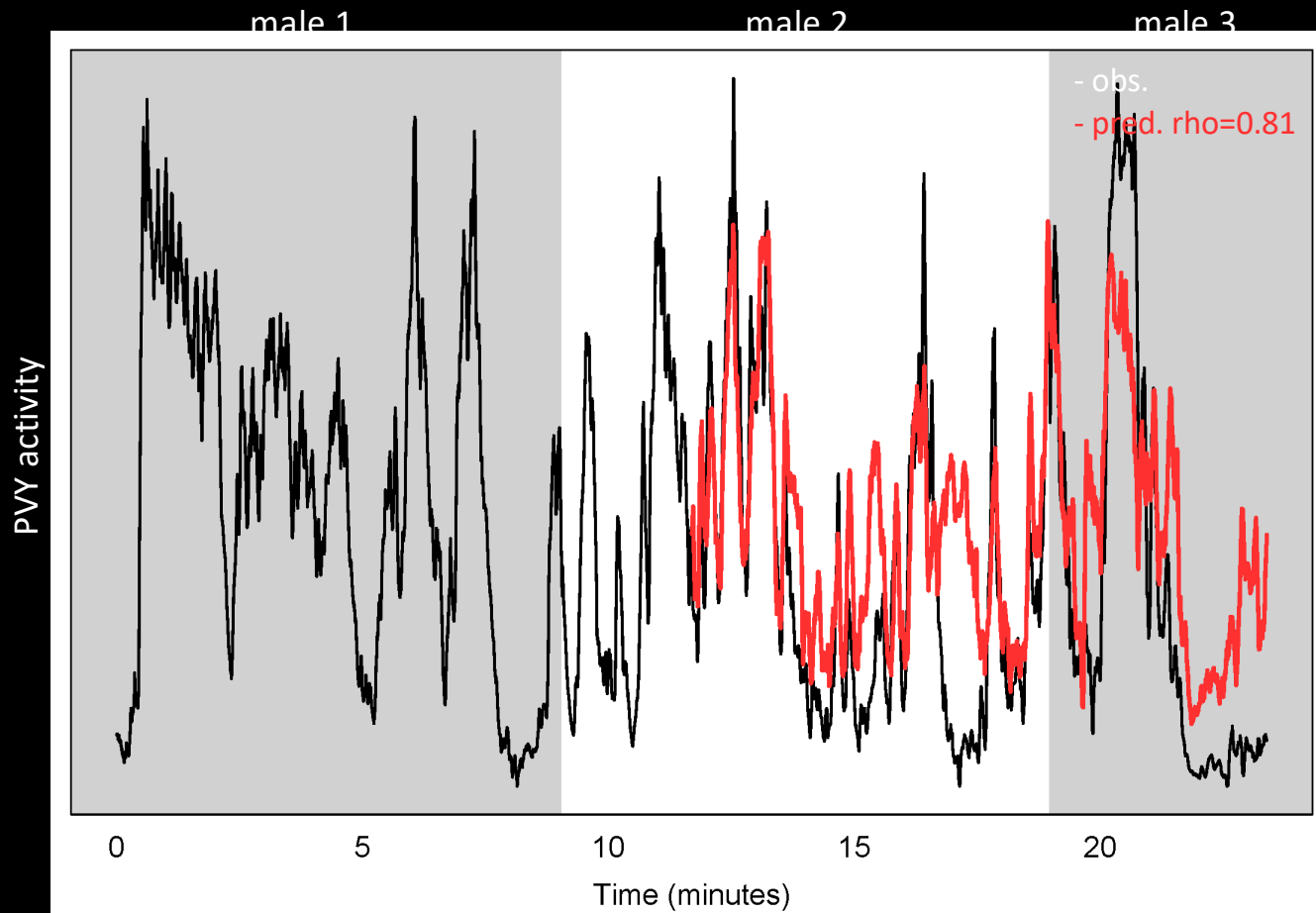


# Directed network of neuronal interactions

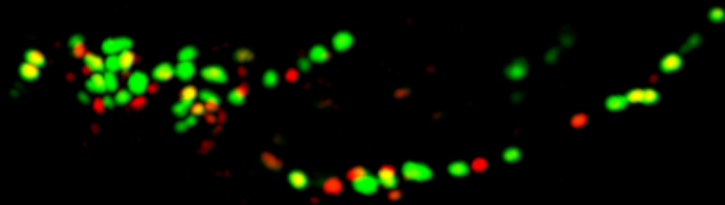




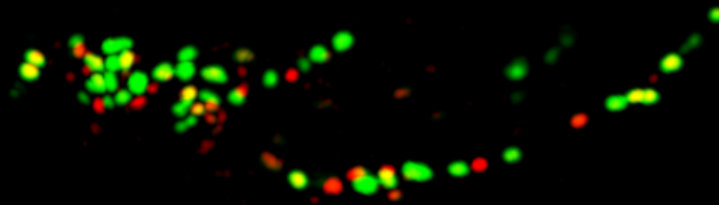
# Multiview embedding



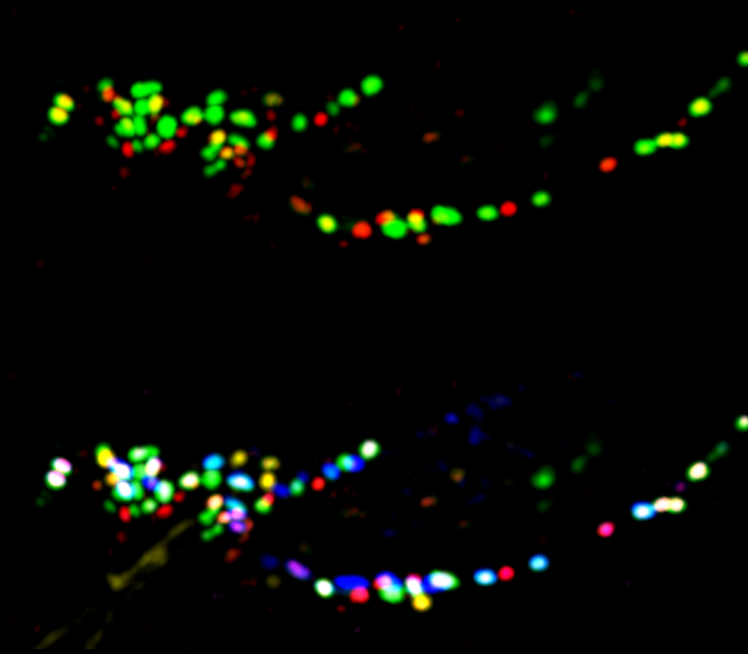
## Cell identification



# Cell identification



# Cell identification



## Acknowledgements

Vivek Venkatachalam

Alkmini Chalofti

Joshua Whitener

Members of Samuel lab

Min Wu

Wesley Hung

Mei Zhen

Ev Yemini

Oliver Hobert

& Aravi Samuel

Funding: NIH, NSF, Burroughs Welcome Fund

