

DASI Polarimetry

The Usual Suspects

For ITP, Aug 2002

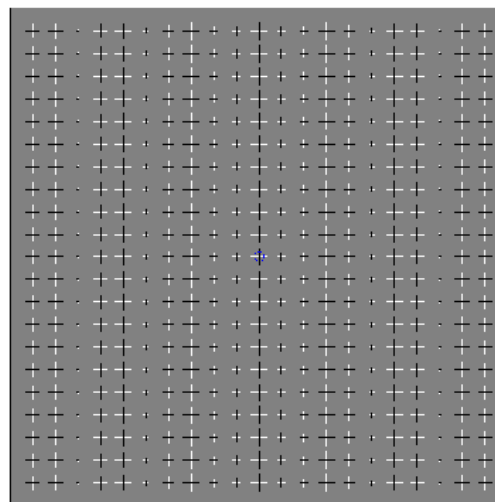
E-mode Polarization (curl free)

pure E-mode

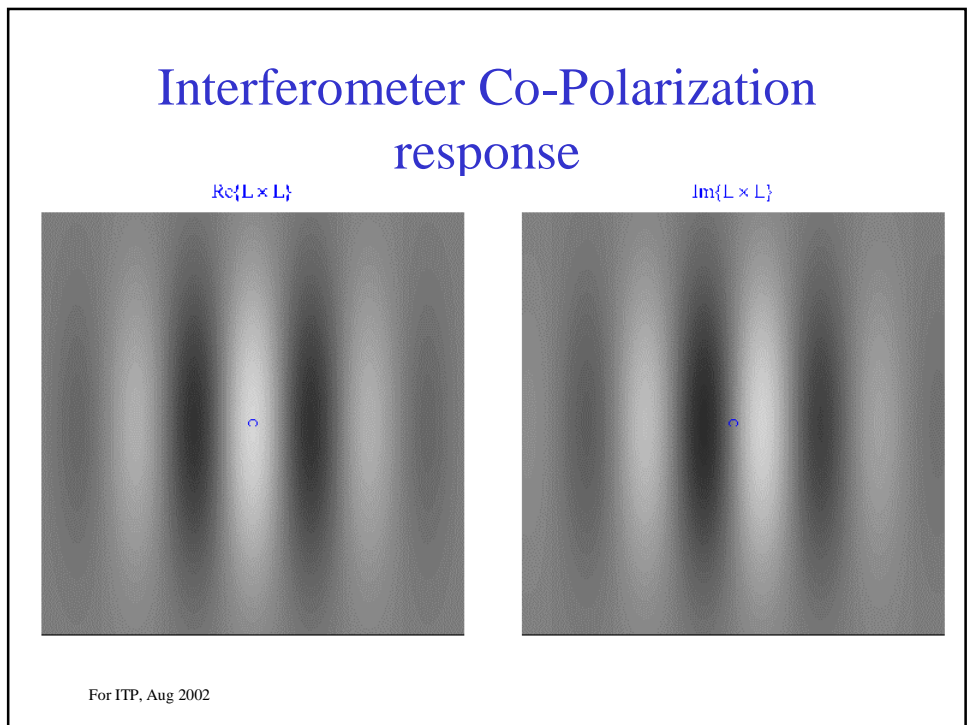
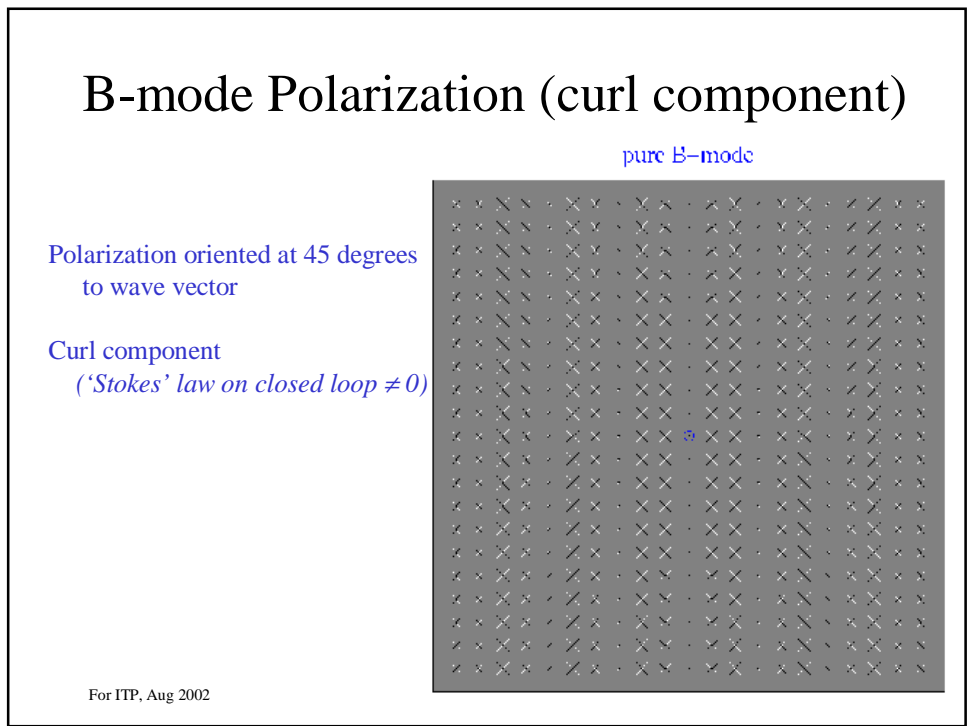
Polarization parallel or perpendicular
to wave vector

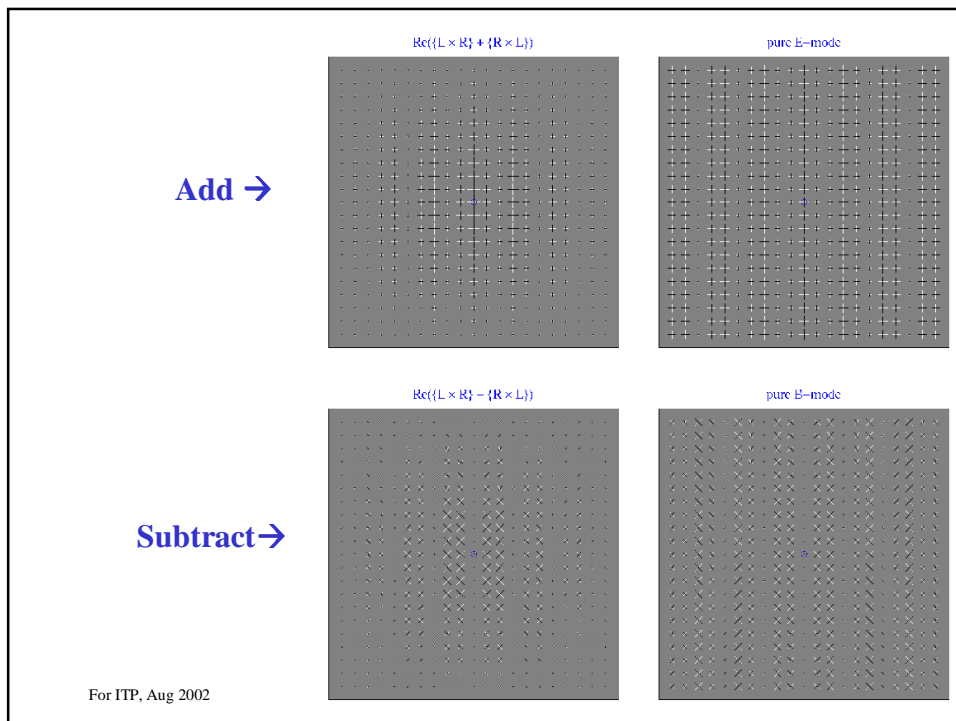
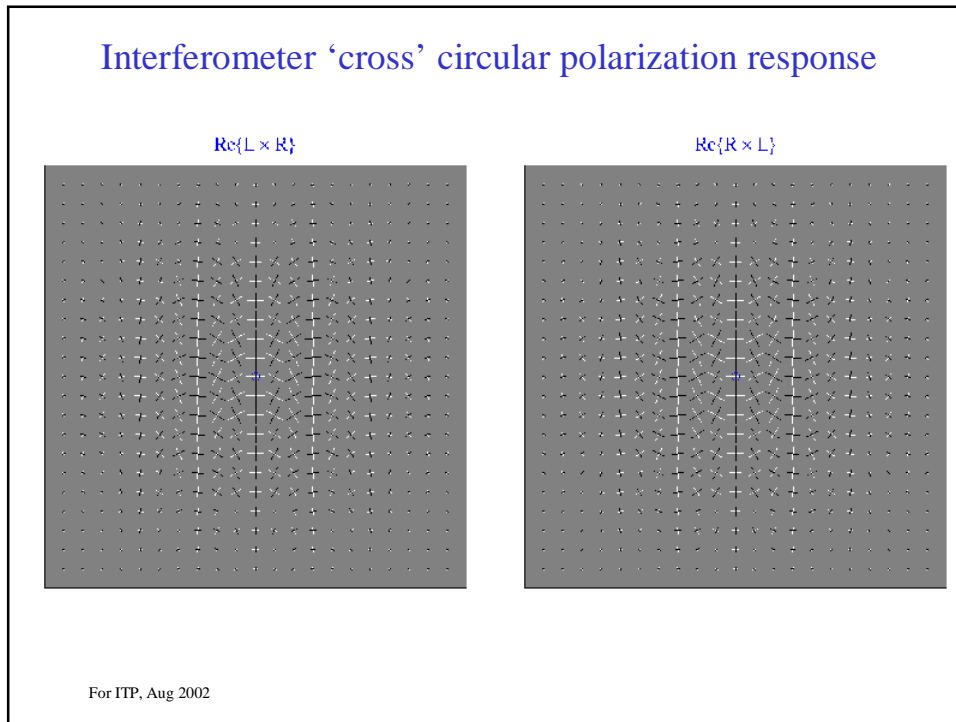
Density (scalar) fluctuations only
generate E-Polarization

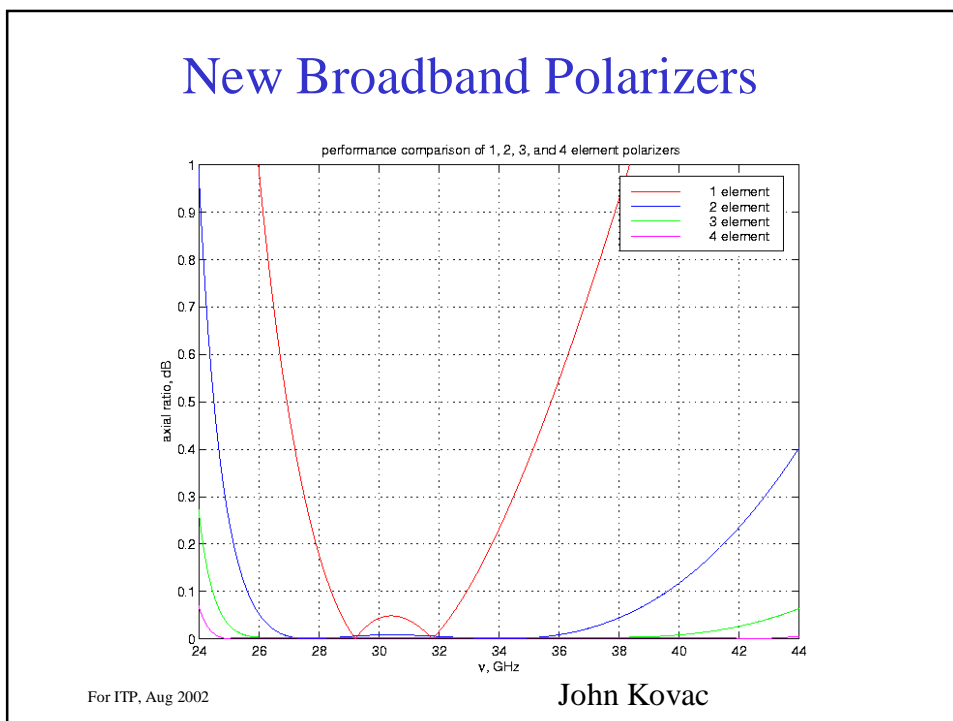
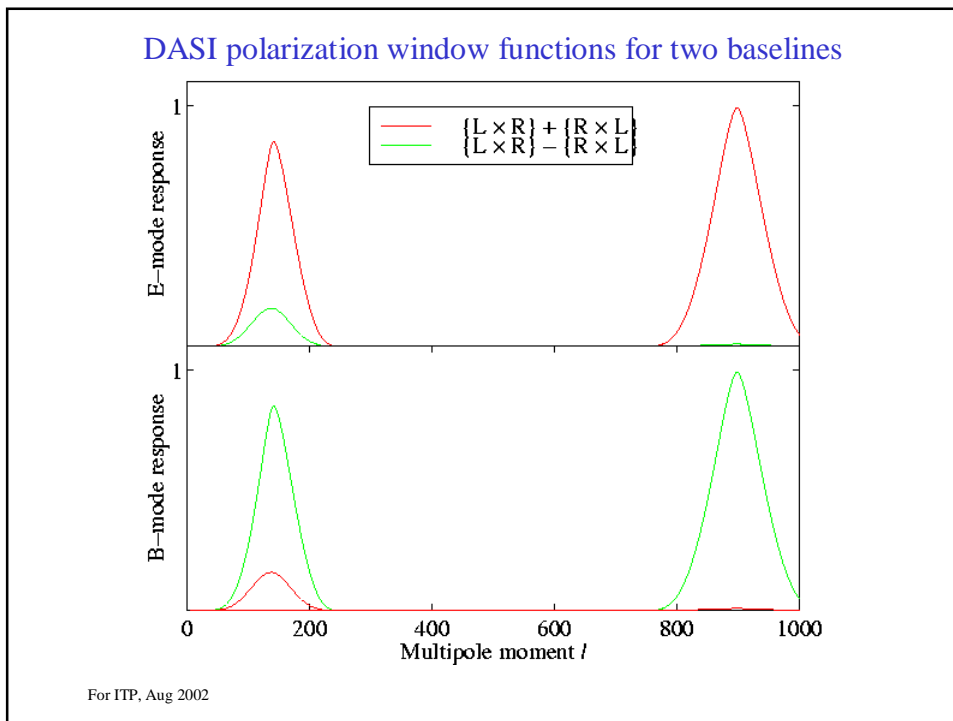
No curl component
(*'Stokes' law on closed loop = 0*)



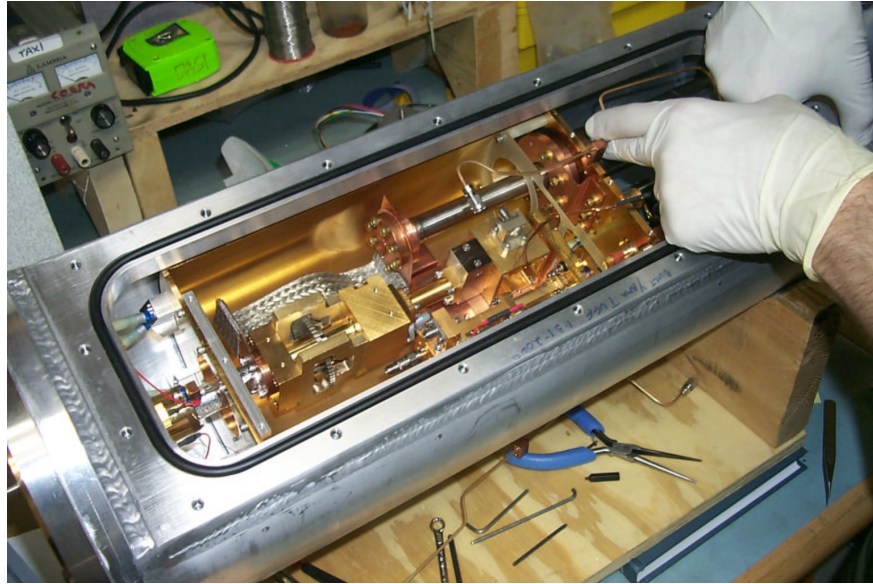
For ITP, Aug 2002







Installing at South Pole for 2001 Season

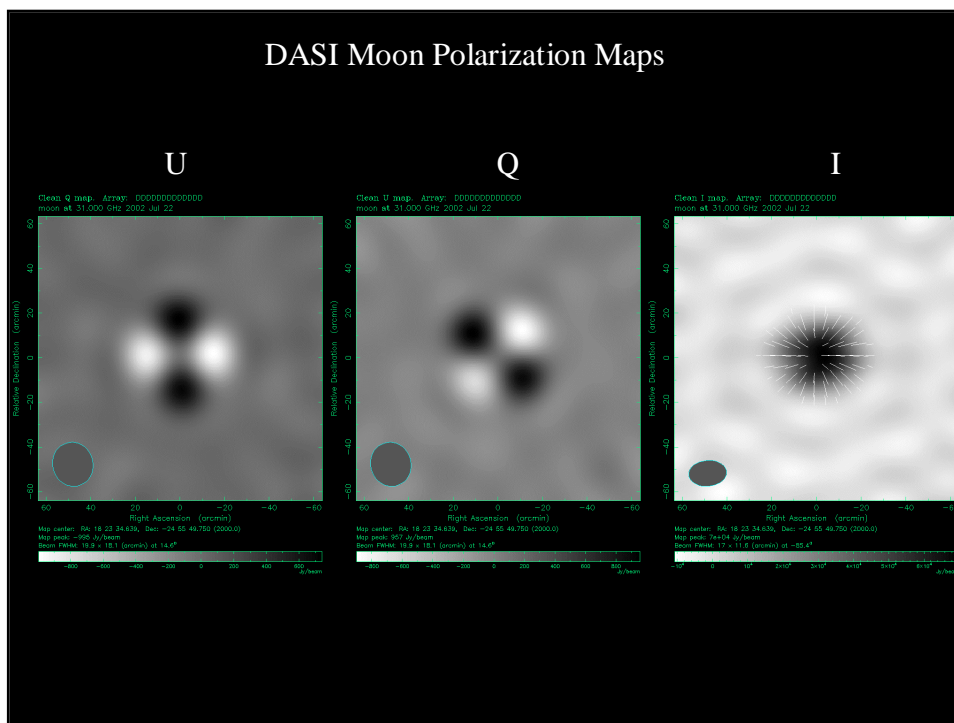
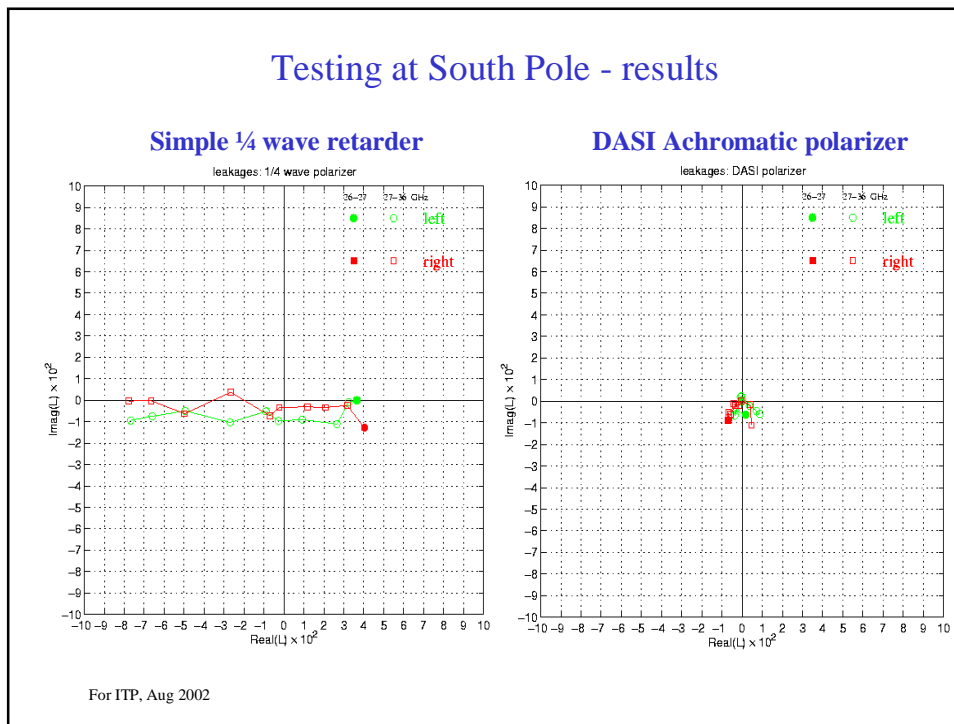


For ITP, Aug 2002

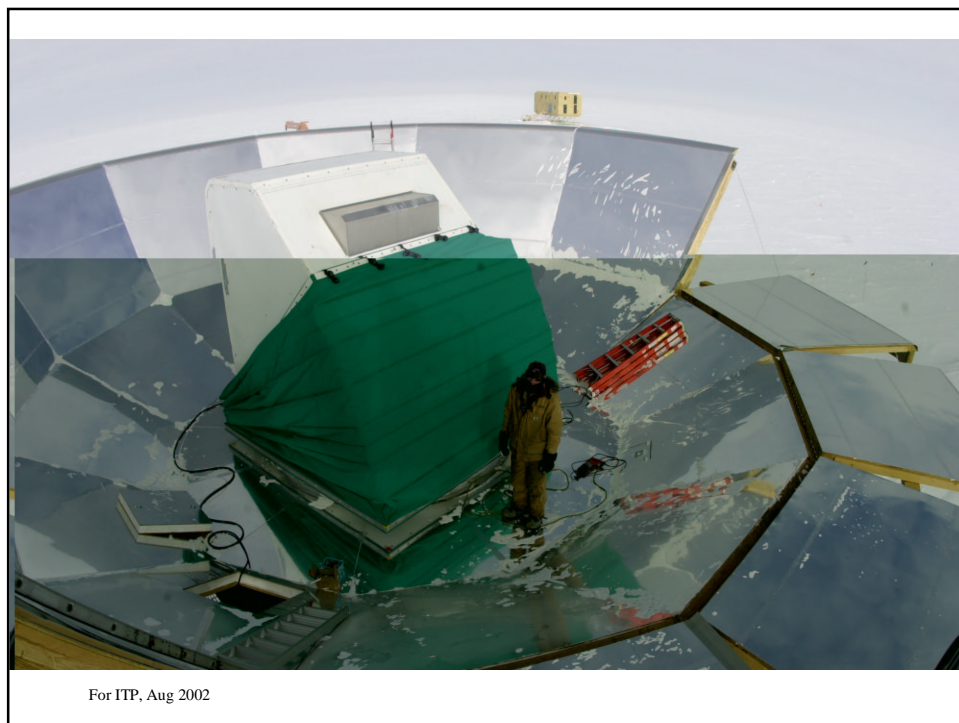
Testing Polarizers at South Pole



For ITP, Aug 2002

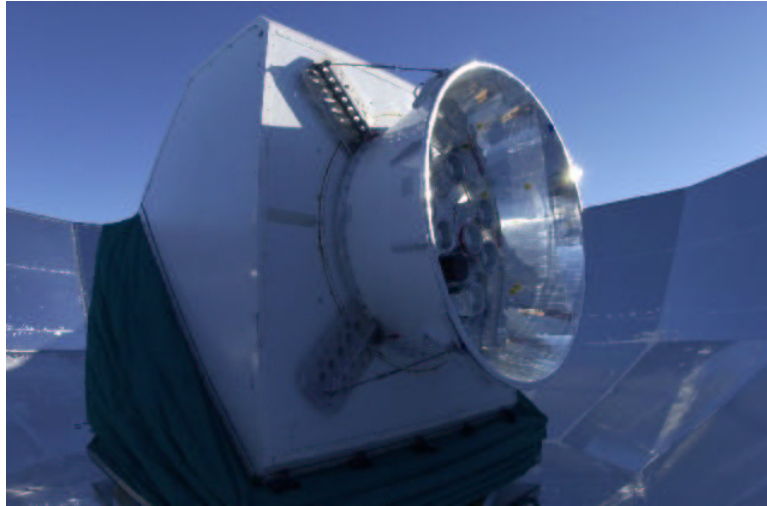


Near-Future Observations of the CMB: DASI



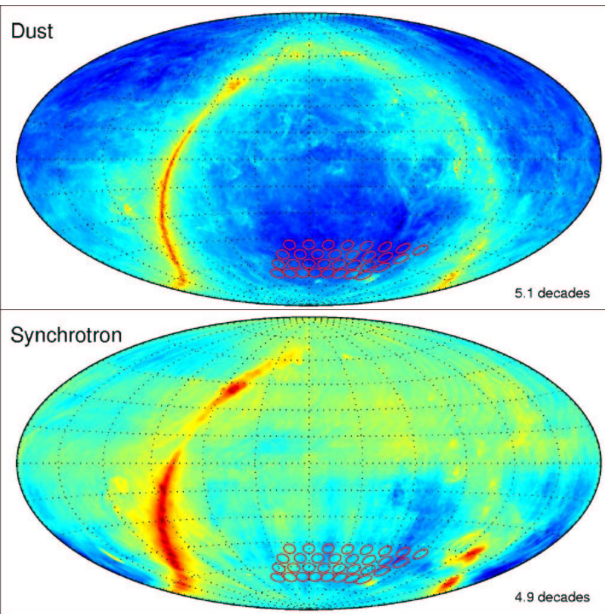
For ITP, Aug 2002

2002: DASI recycles TOPHAT sunscreen



For ITP, Aug 2002

DASI Polarization Field Selection – Pick best two fields



For ITP, Aug 2002

Near-Future Observations of the CMB: DASI

