

Measuring ICM velocities: resonant scattering and X-ray polarization

I.Zhuravleva, E.Churazov, R.Sunyaev, K.Dolag,
N.Werner, S.Sazonov, W.Forman

Galaxy Clusters: the Crossroads of Astrophysics and Cosmology
Santa Barbara 2011

We know

Temperature

Density

Abundance

We don't know

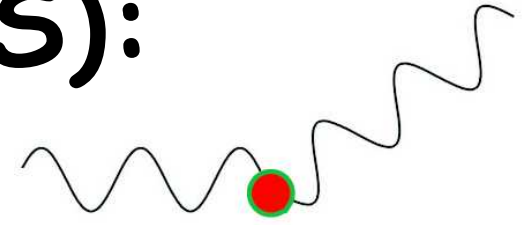
Velocity field

Magnetic fields

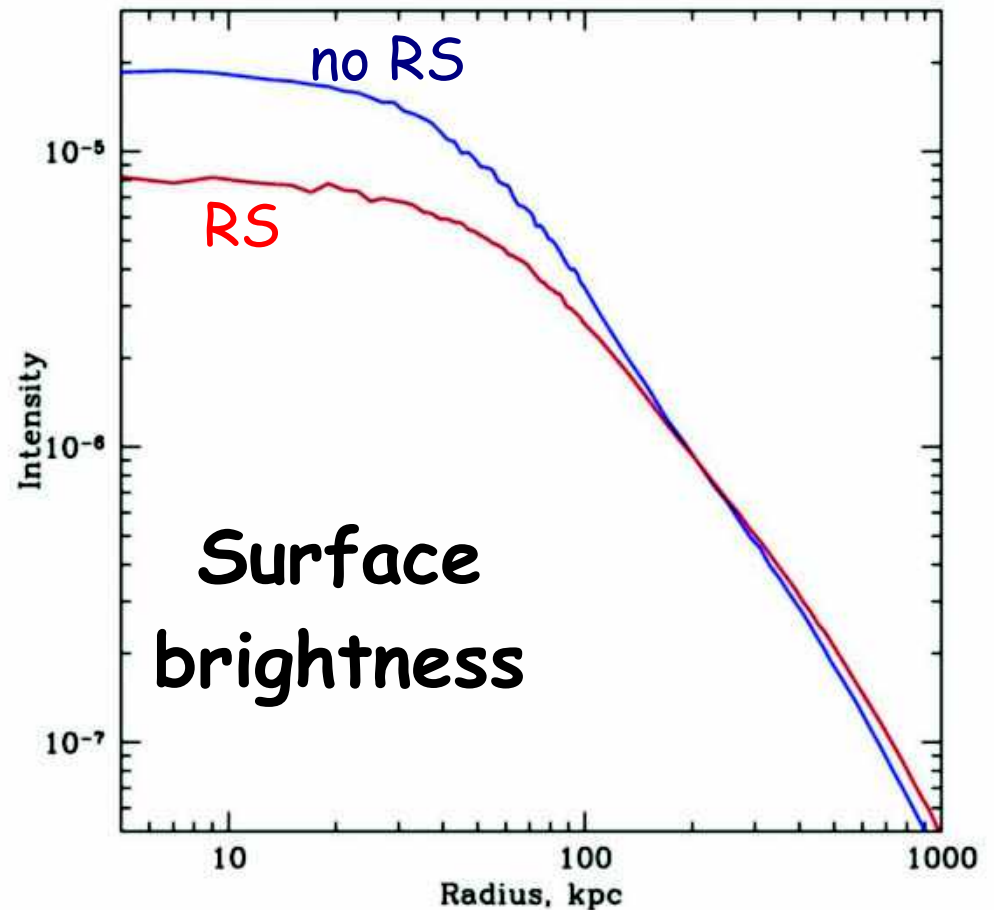
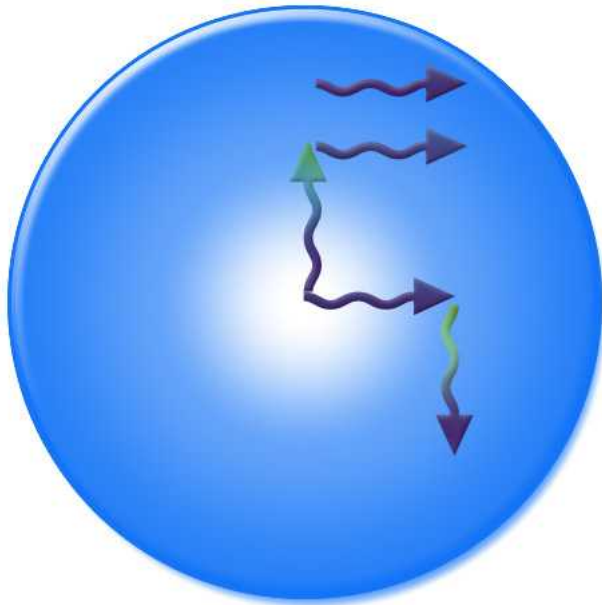
Thermal conduction

- (1) Constraints on velocity field with resonant scattering: amplitudes, spatial scales, anisotropy
- (2) Constraints on transverse gas motions: X-ray polarimetry
- (3) Observables \rightarrow 3D velocity field

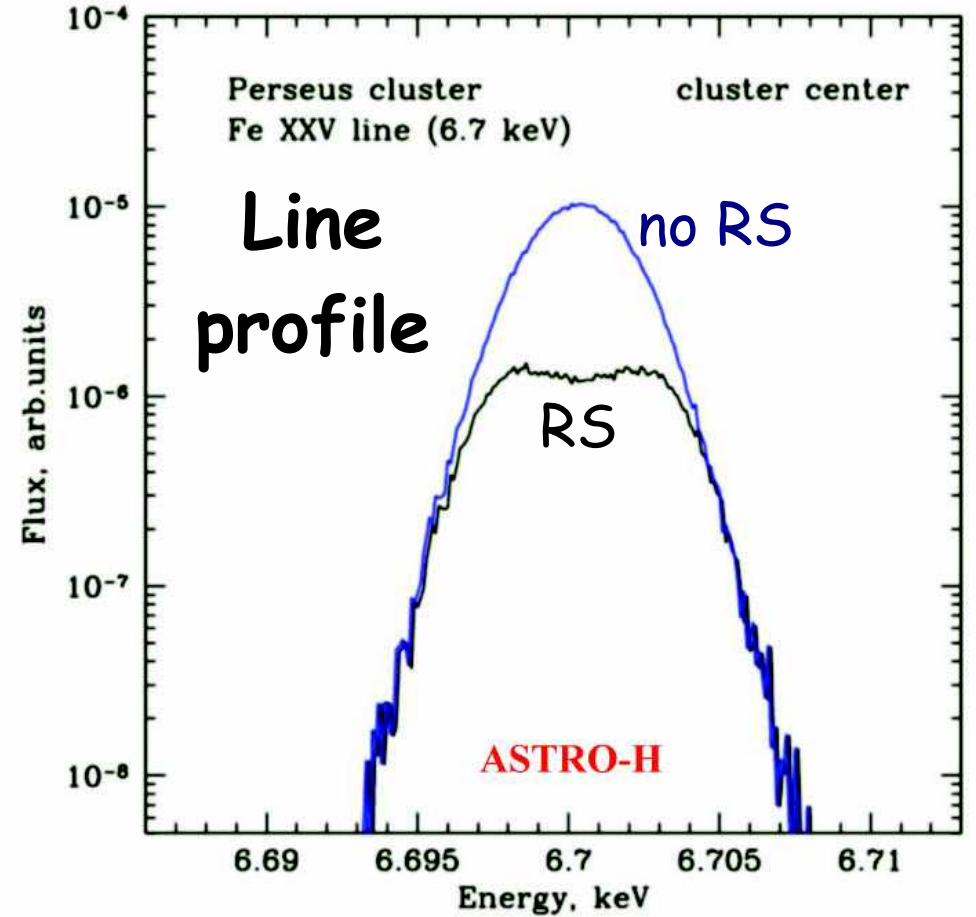
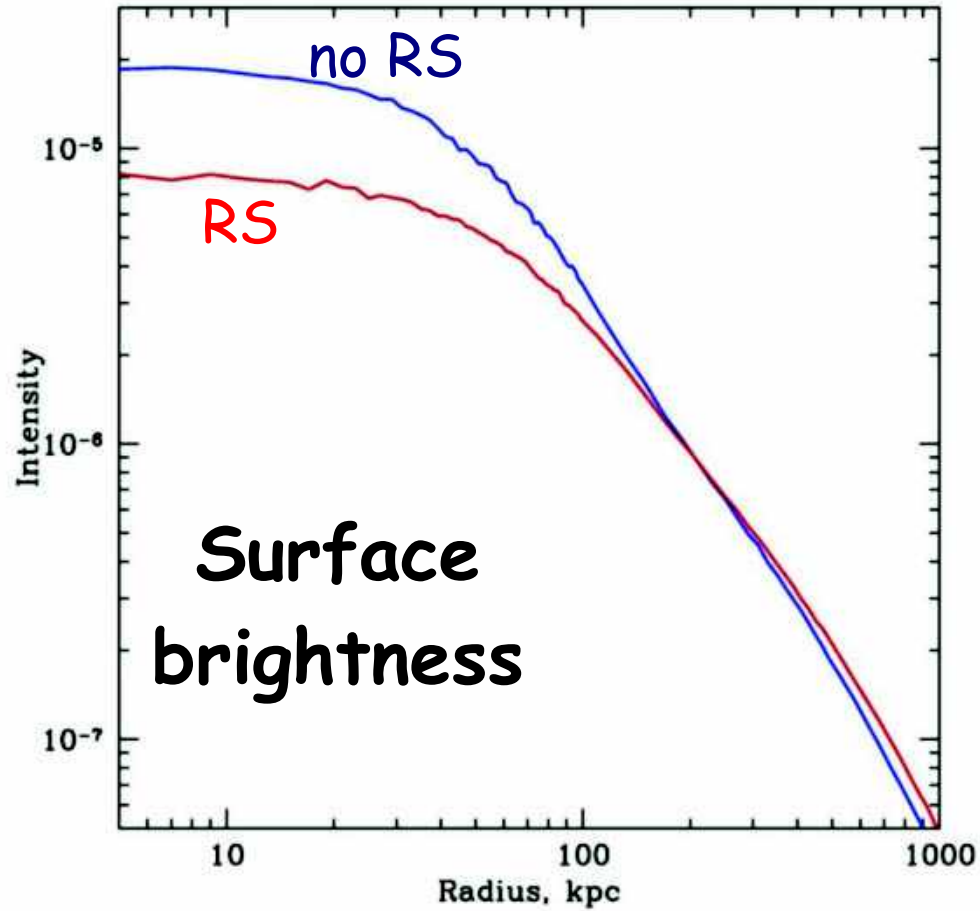
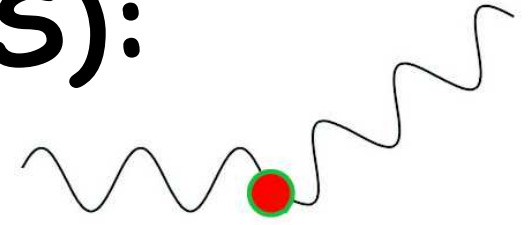
Resonant Scattering (RS): absorption+emission



Gilfanov, Sunyaev & Churazov (1987):
optical depth in resonant lines can be ~ 1



Resonant Scattering (RS): absorption+emission



Optical depth in X-ray lines

$$\tau = \int \frac{\sqrt{\pi} h r_e c f_{ik}}{\frac{E_0}{c} \sqrt{\frac{2kT_e}{Am_p} + V_{\text{turb}}^2}} n_i dl$$

$$n_i = n_p Z \delta_i$$

Large oscillator strength of the transition

Appreciable ion fraction

Abundant elements

Small line width

Heavy elements (thermal broadening)

Optical depth in X-ray lines

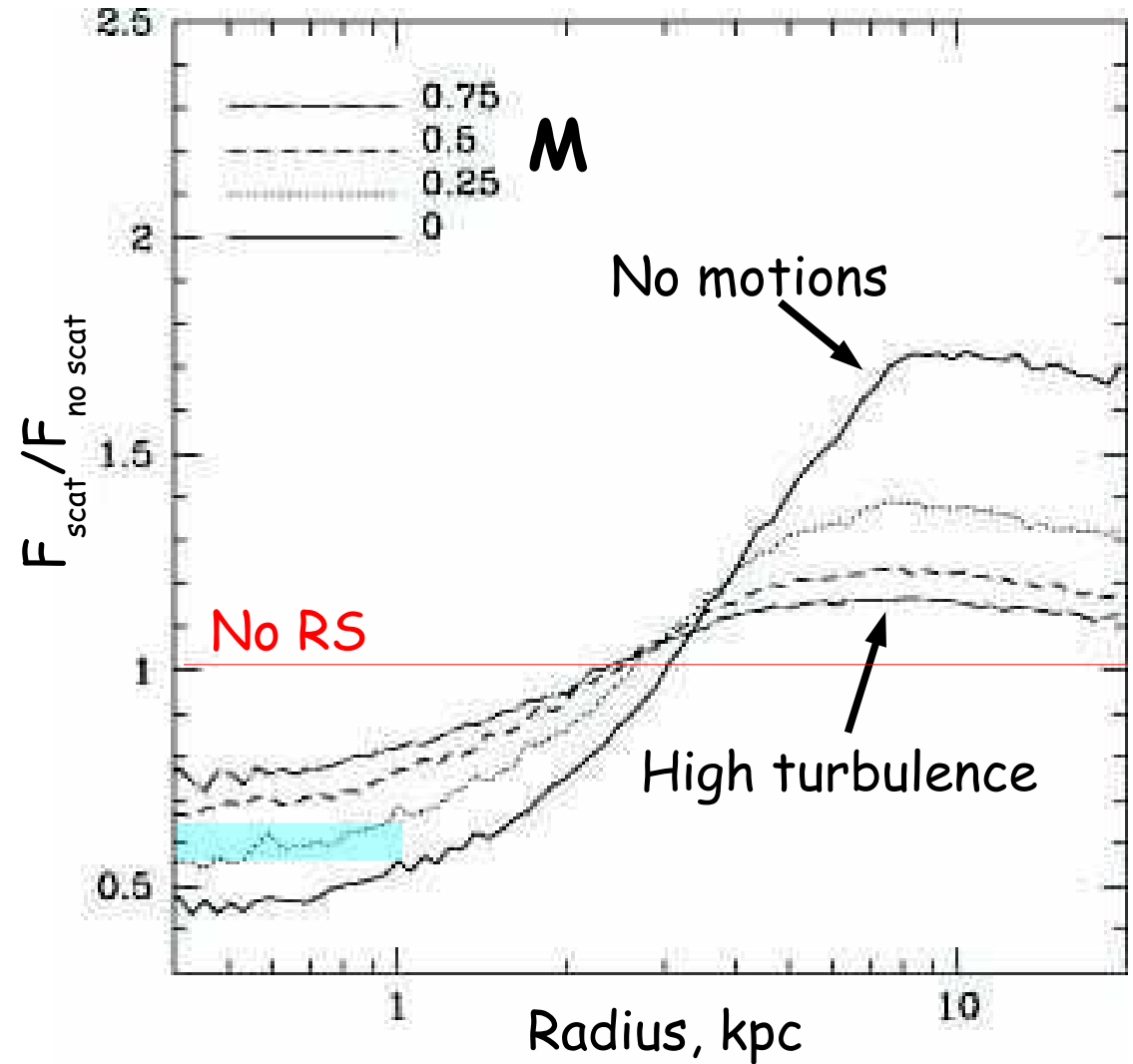
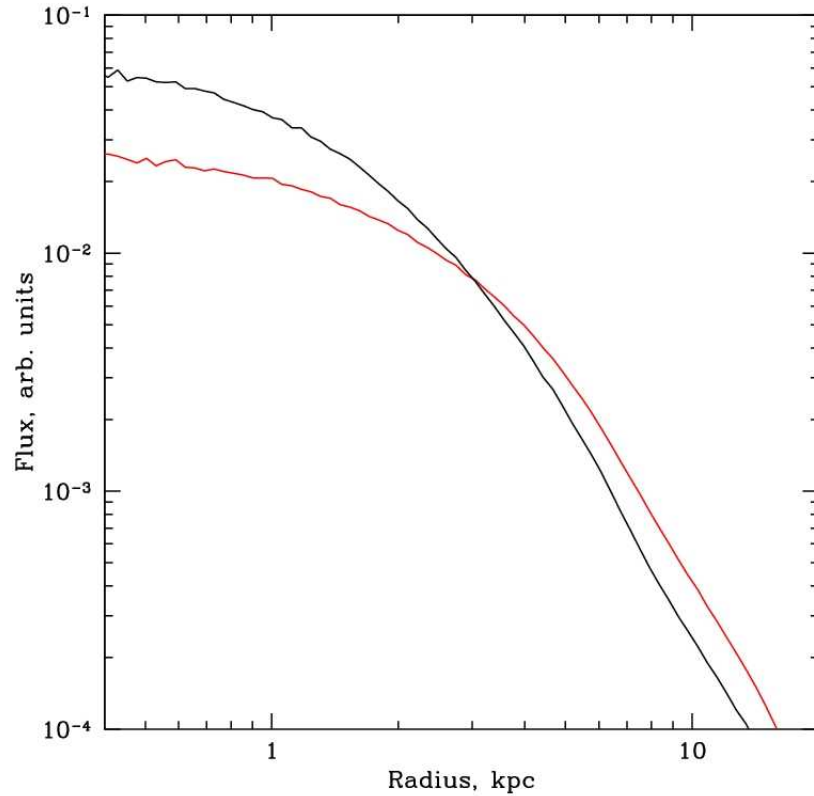
Ion	E , keV	f	τ , NGC 4636	τ , Virgo/M87	τ , Perseus
O VIII	0.65	0.28	1.2	0.34	0.19
Fe XVII	0.83	2.73	8.8	0.0005	$2.8 \cdot 10^{-8}$
Fe XVIII	0.87	0.57	1.3	0.0007	$1.5 \cdot 10^{-7}$
Fe XXIII	1.129	0.43	0.016	1.03	0.16
Fe XXIV	1.168	0.245	0.002	1.12	0.73
Fe XXV	6.7	0.78	0.0002	1.44	2.77

Resonant scattering in clusters

Gilfanov+, 1987; Krolik & Raymond, 1988; Molendi+, 1998;
Shigeyama 1998; Akimoto+, 1999; Kaastra+, 1999;
Churazov+, 2001; Mathews+, 2001; Bohringer+, 2001;
Sakelliou+ 2002; Xu+, 2002; Sazonov+, 2002a;
Sazonov+, 2002b; Kahn+, 2003; Churazov+, 2004;
Gastaldello & Molendi, 2004; Sanders+, 2004;
Sanders & Fabian, 2006; Molnar+, 2006;
Werner+, 2009; Hayashi+, 2009; Zhuravleva+, 2010a,b;

See our recent review on RS:
EC+, 2010

Resonant scattering: NGC4636



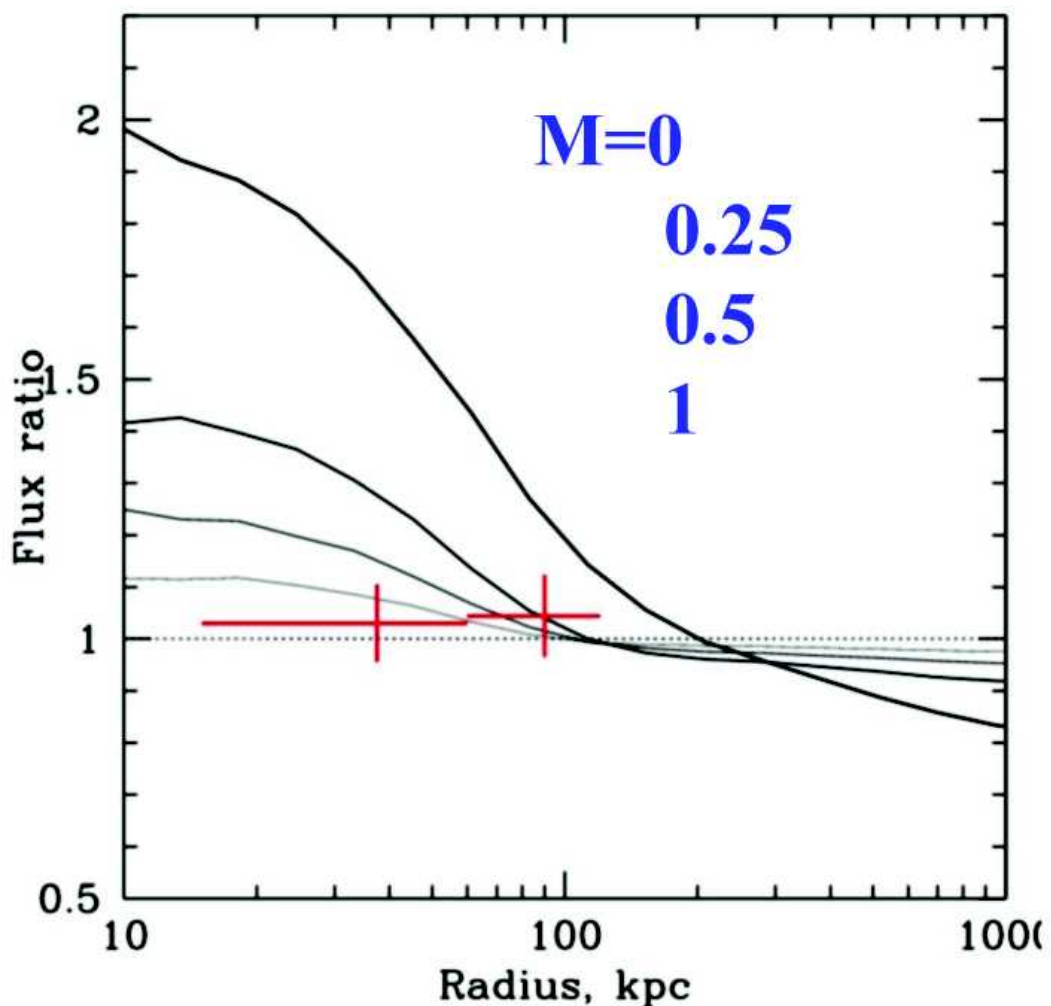
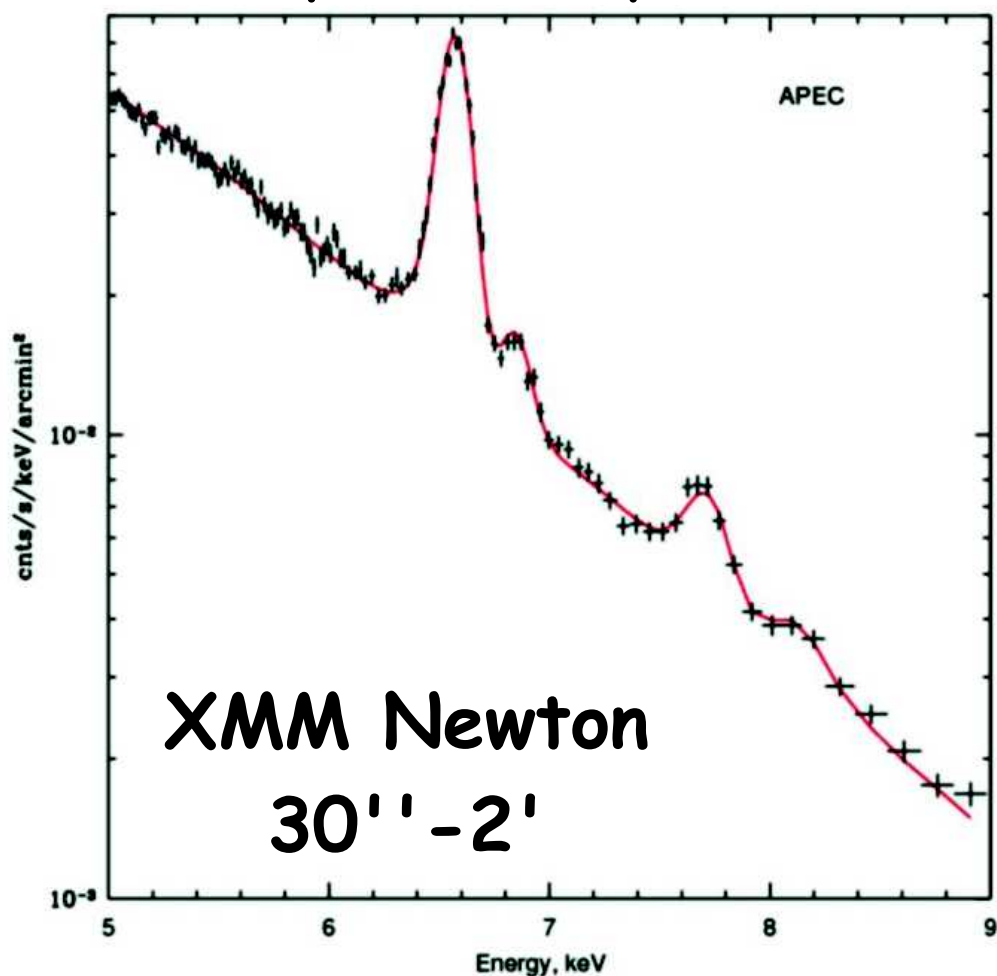
V in the core $<$
100 km/s

Pressure support $<$ 5% of the thermal P

Resonant scattering: Perseus

He-like Fe 6.7 keV line,
optical depth ~ 3

$$F_{\text{Ni}} / F_{\text{Fe}}$$



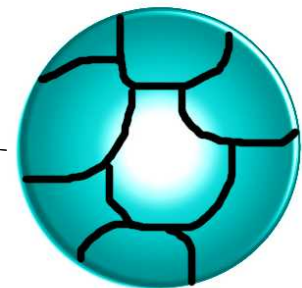
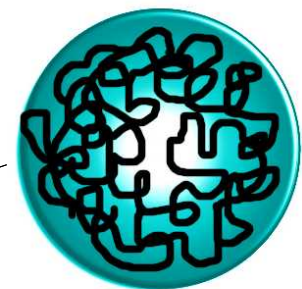
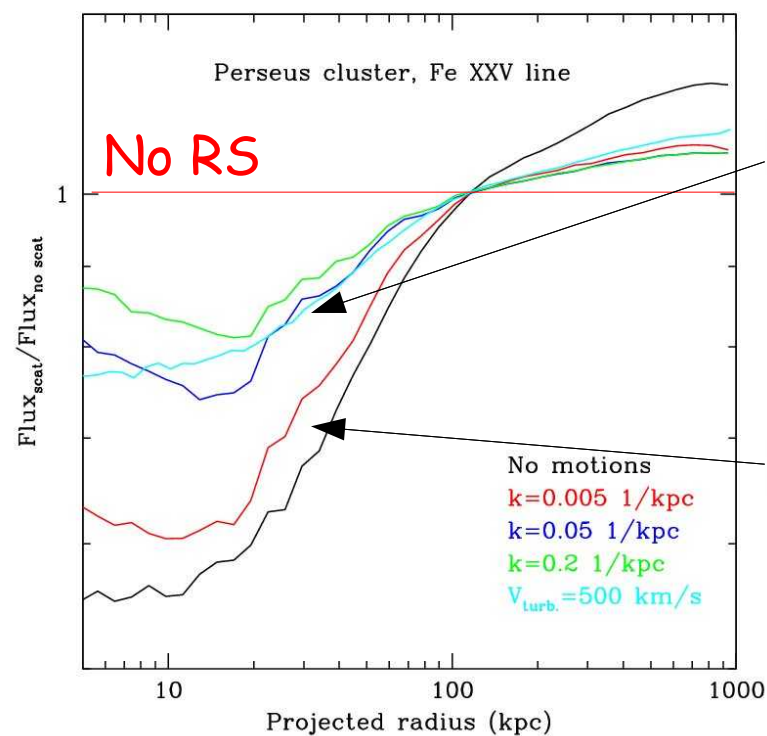
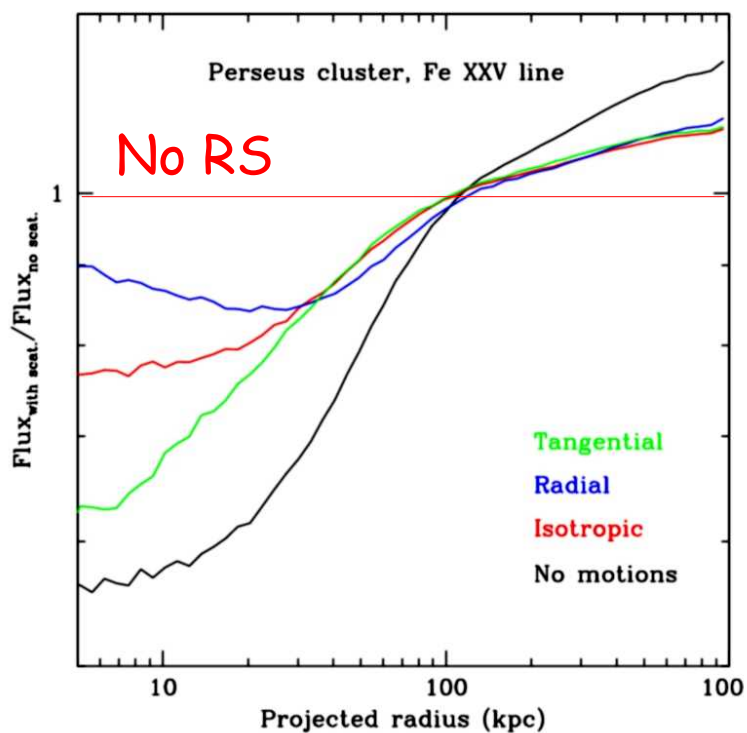
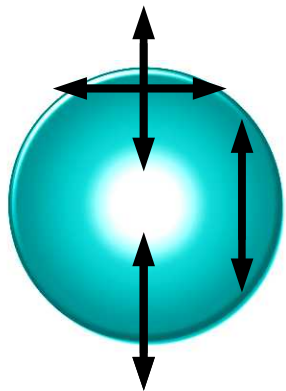
6.7 keV line is not suppressed $\rightarrow v > 400$ km/s

Churazov et al. 2004

Resonant Scattering:

spatial scales and anisotropy

Optical depth depends on the character of motions



RS is mostly sensitive to:

- (1) radial motions
- (2) small scale motions

I. X-ray polarization in strong lines

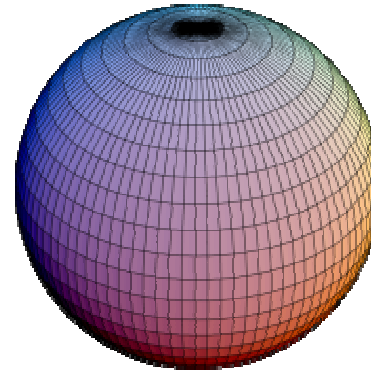
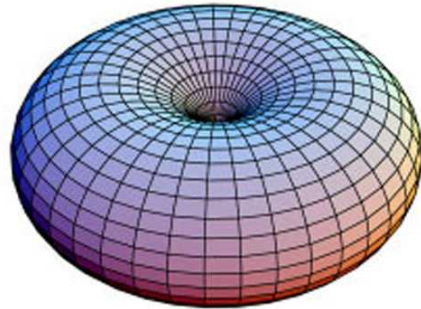
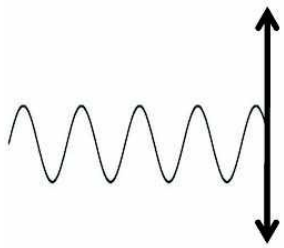
Scattering phase function:

Rayleigh (w1) + Isotropic (w2)

$$w1+w2=1$$

Polarization

No polarization



Non zero weight of Rayleigh scattering

(Chandrasekhar 1950, Hamilton 1947)

He-like K_{α} ($1s^2 - 1s2p(^1P_1)$) : $J=0, \Delta J=1 \Rightarrow W_1=1$

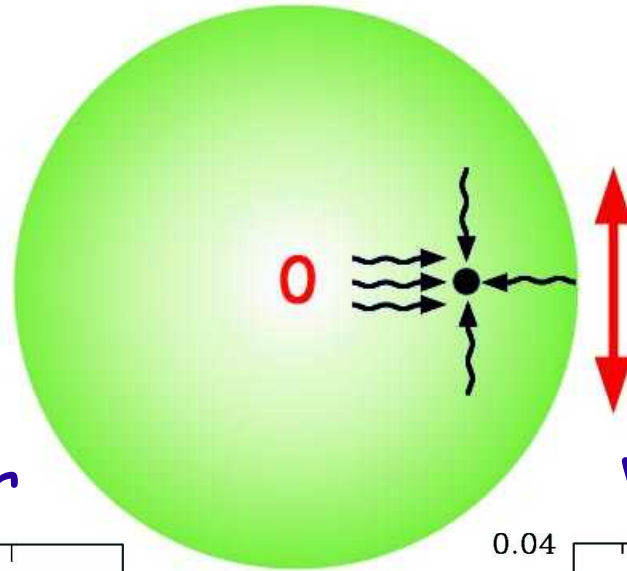
H-like K_{α} ($1s - 2p(^1P_{1/2})$) : $J=1/2, \Delta J=0 \Rightarrow W_1=0$

H-like K_{α} ($1s - 2p(^1P_{3/2})$) : $J=1/2, \Delta J=1 \Rightarrow W_1=0.5$

II. X-ray polarization: quadrupole moment

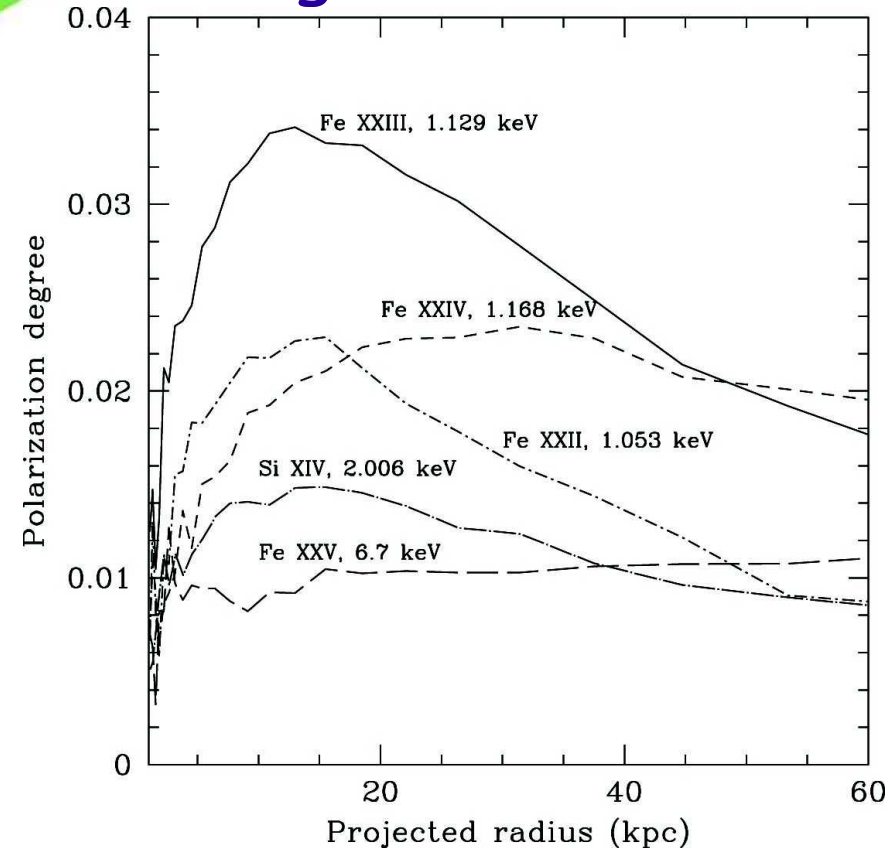
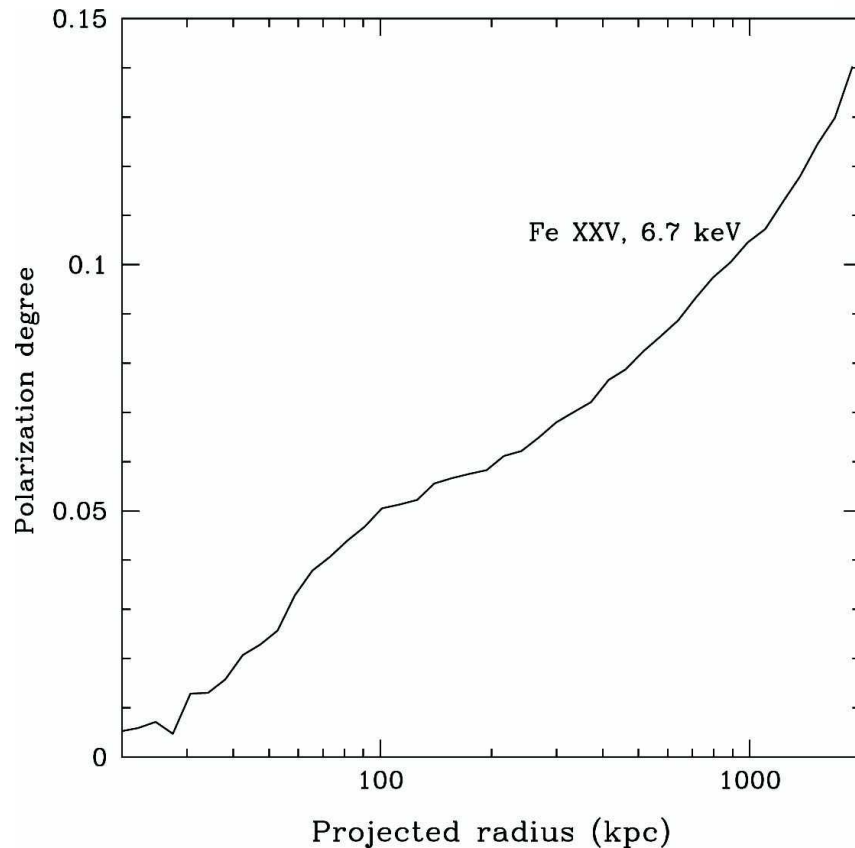
Rayleigh phase function + quadrupole moment = polarization

Sazonov et al 2002;
IZ et al. 2010

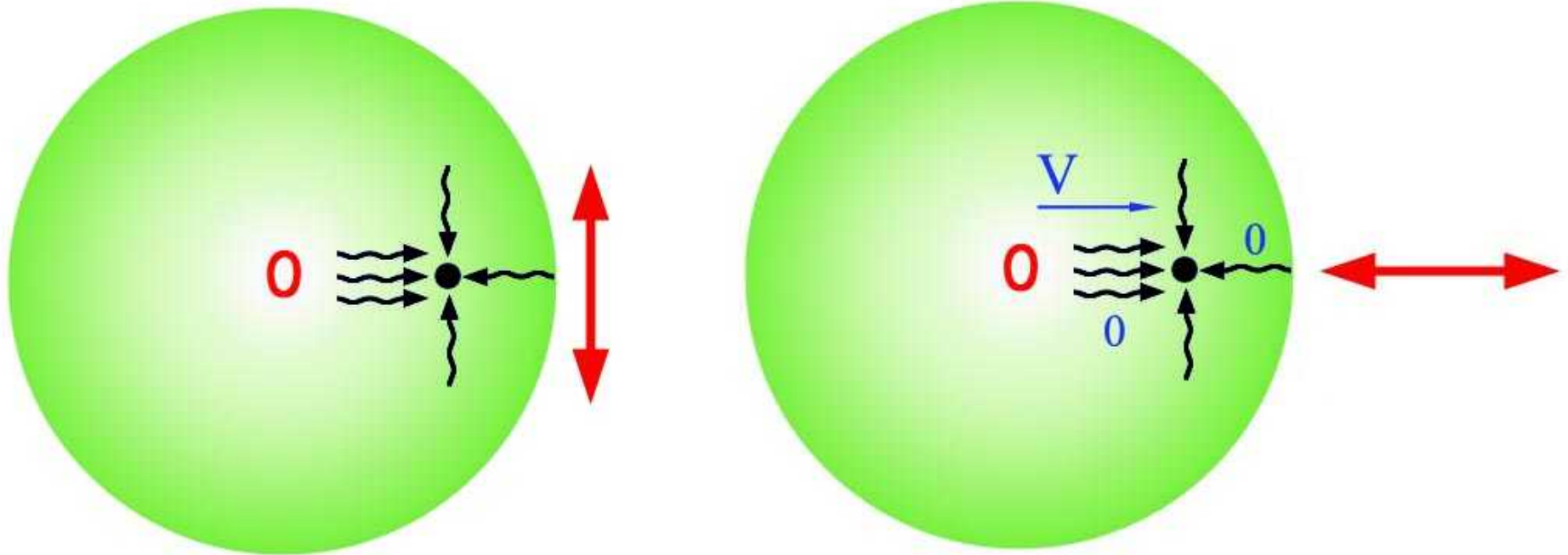


Perseus cluster

Virgo/M87 cluster

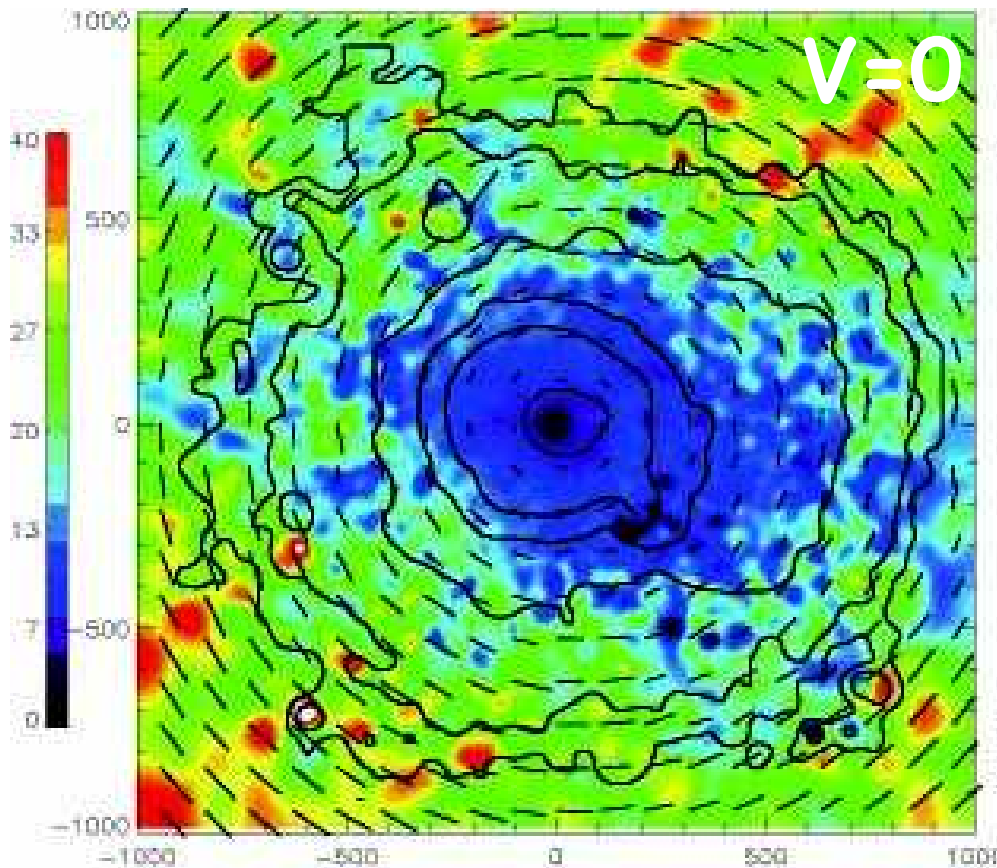


X-ray polarization: transverse gas motions

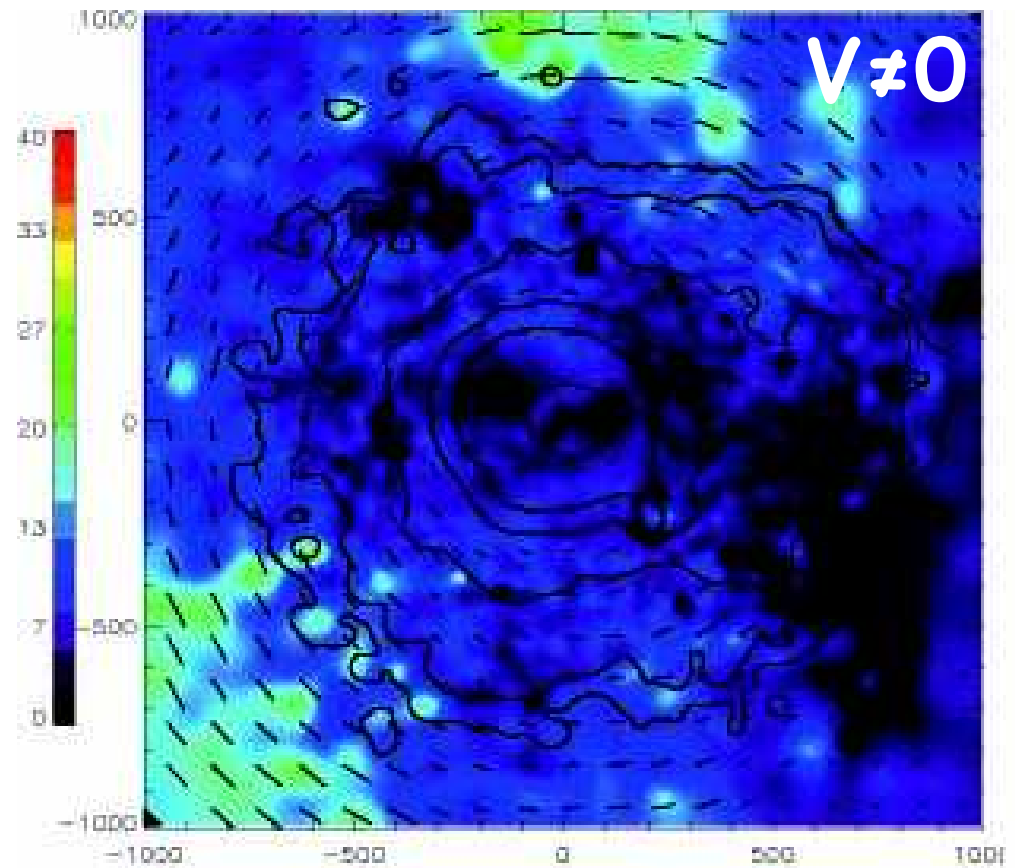


X-ray polarization: transverse gas motions

6.7 keV line, optical depth ~ 3.6



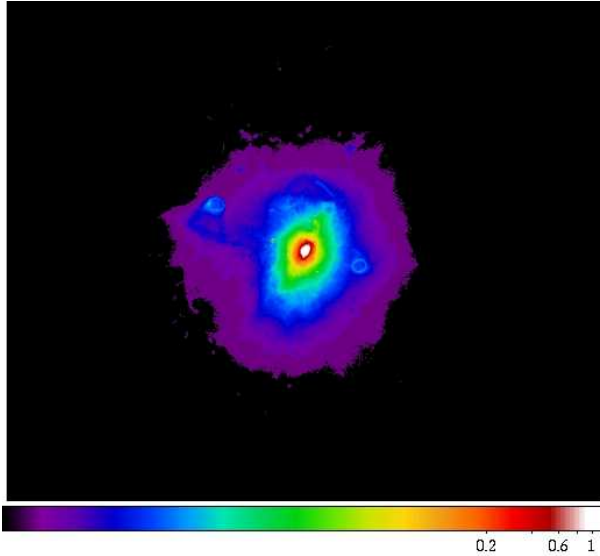
$P \sim 25\%$ at $r=500$ kpc



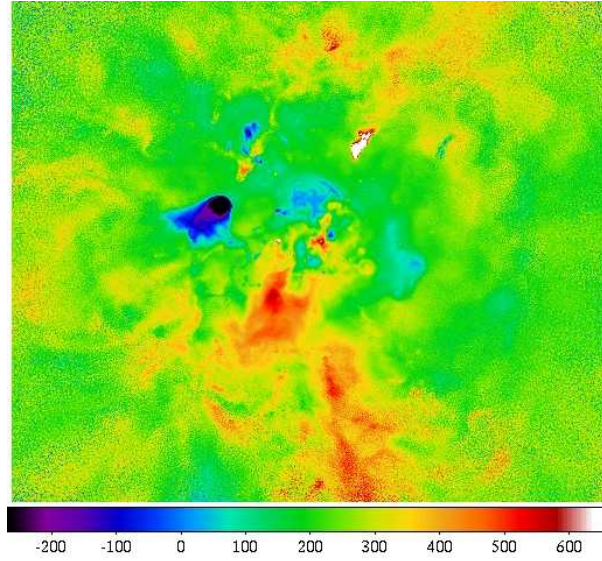
$P \sim 15\%$ at $r=500$ kpc

3D velocity PS and observables

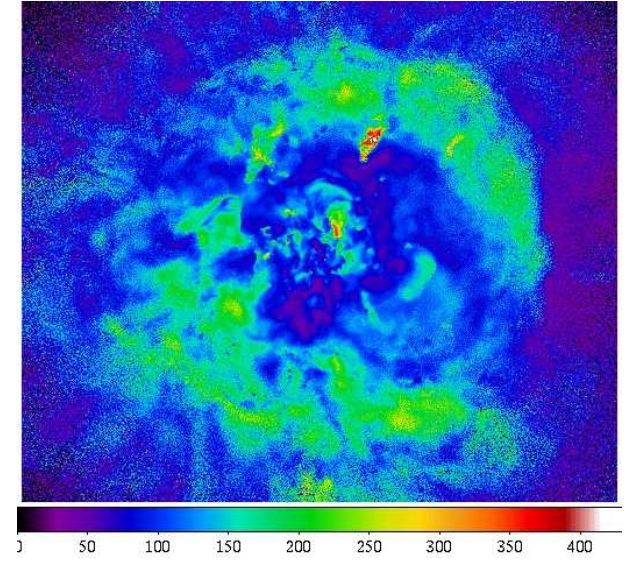
$$\int n_e^2 dl$$



$$\langle v_z \rangle_l$$



$$\sqrt{\langle v_z^2 \rangle_l - \langle v_z \rangle_l^2}$$



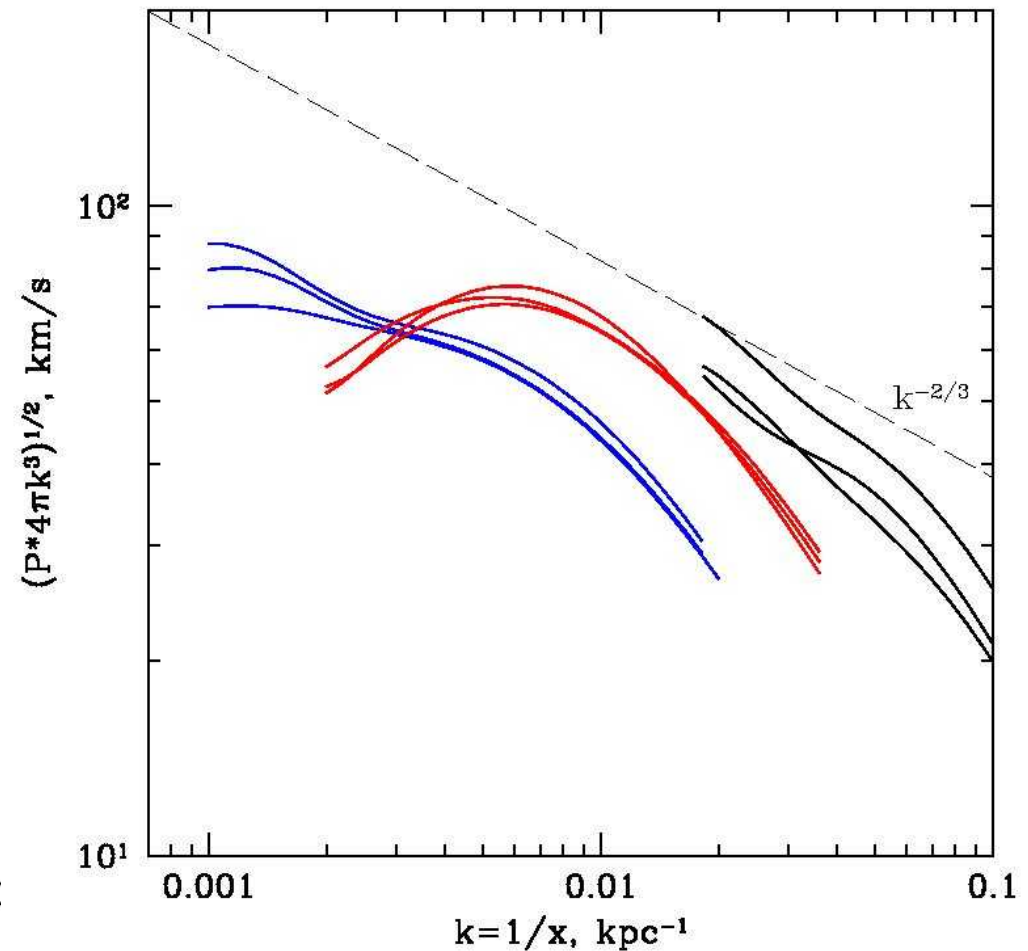
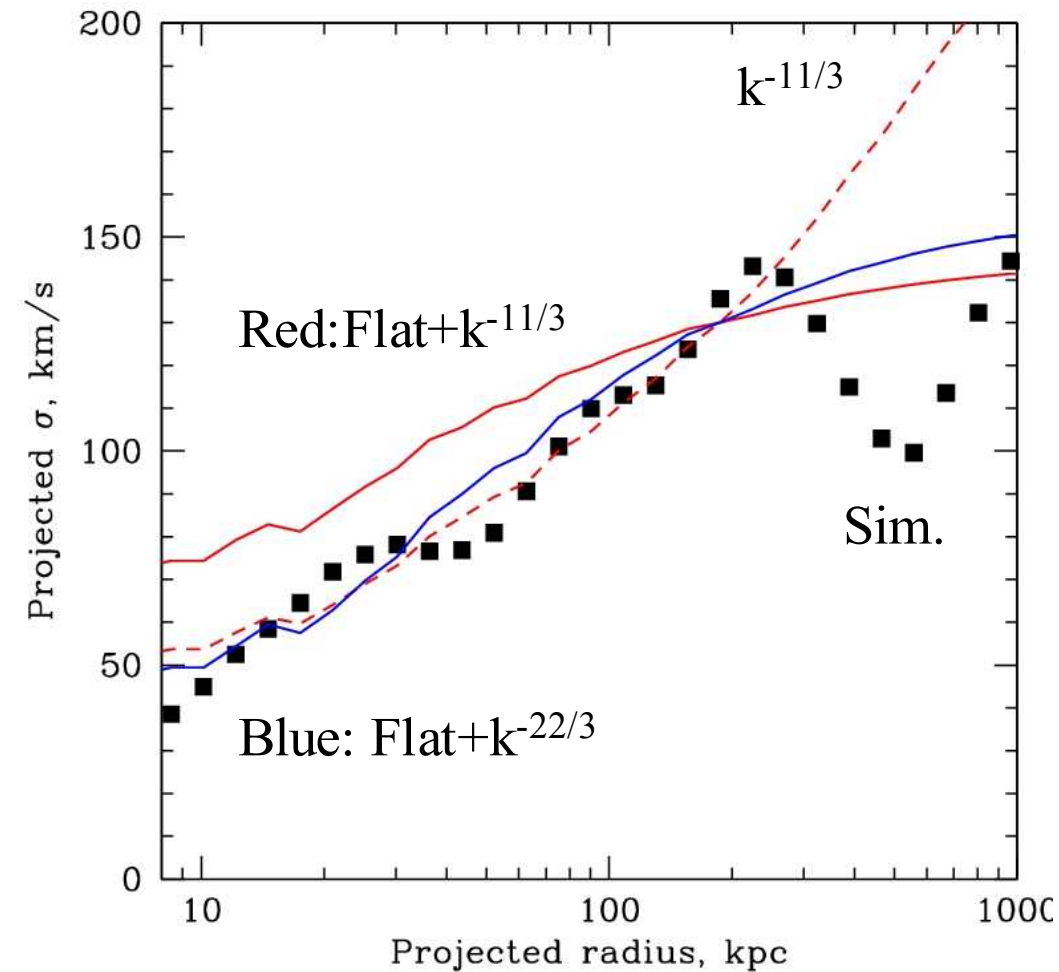
Emission measure weighted V_z and σ

$$v_{2D} = \int v_{3D} n_e^2(z) dz / \int n_e^2(z) dz$$

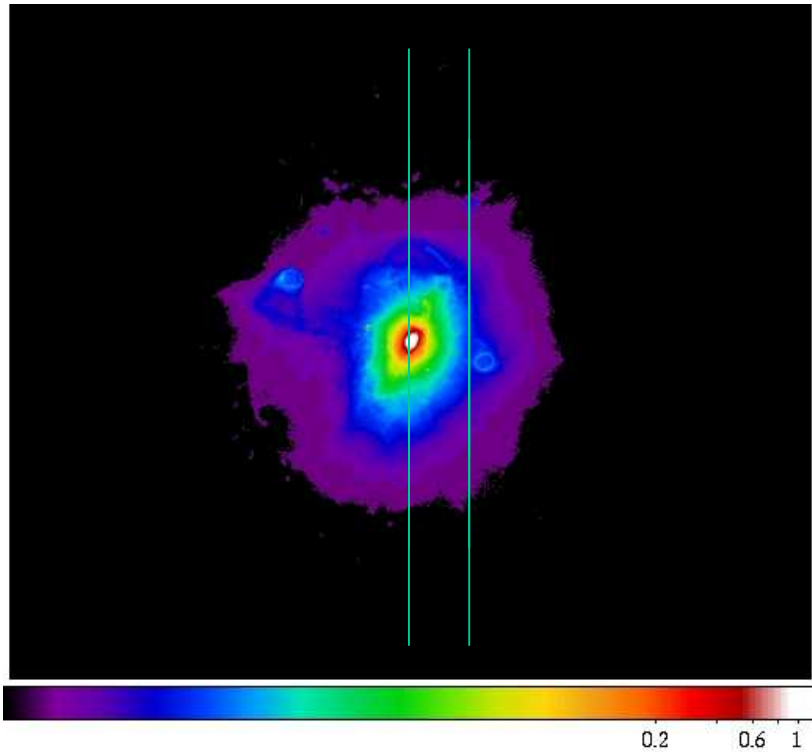
$$P_{2D}(k) = \int P_{3D} \left(\sqrt{k^2 + k_z^2} \right) W^2(k_z) dk_z$$

Velocity dispersion and structure function

$$\sigma^2 = \int P_{3D} [1 - W^2(k_z)] dk_z dk_x dk_y$$

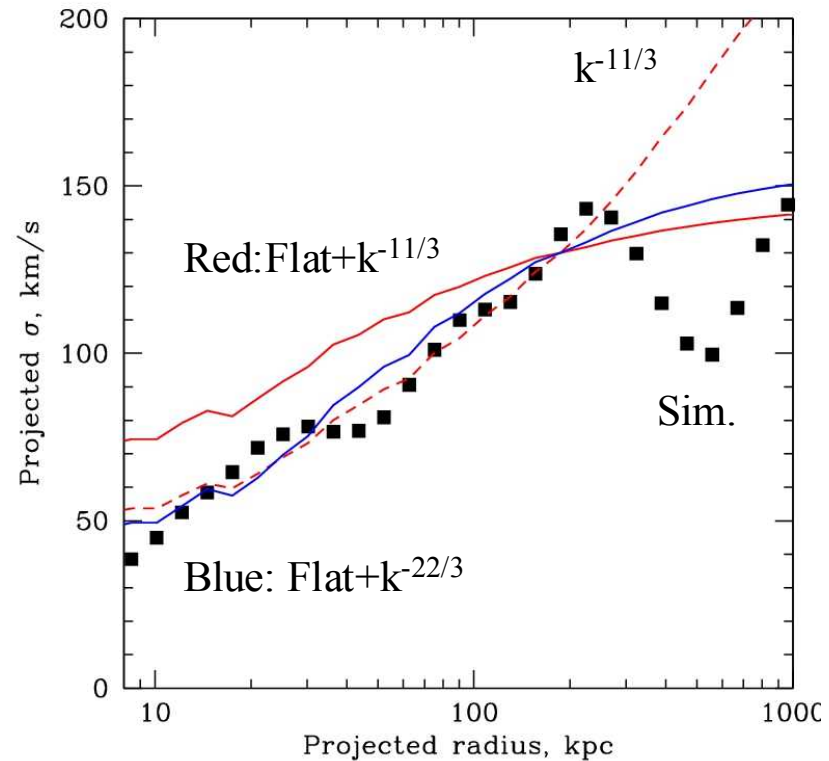


Velocity dispersion and structure function



At a given radius R
interval $\sim R$
contributes to σ

$$\sigma^2 = \int P_{3D} [1 - W^2(k_z)] dk_z dk_x dk_y$$



Conclusions

Observables V_z and σ constrain amplitude and shape of 3D velocity PS, structure function

RS is a powerful tool to study gas motions: amplitudes, spatial scales, anisotropy

Astro-H

X-ray polarization: constraints on transverse gas motions

Requirements for X-ray polarimeters:

- Energy resolution: for 6.7 keV line $P \downarrow 50\%$ if $\Delta E = 50$ eV.
 - Angular resolution: \sim arcmin.
- Large effective area and field-of view, faint X-ray sources

IXO