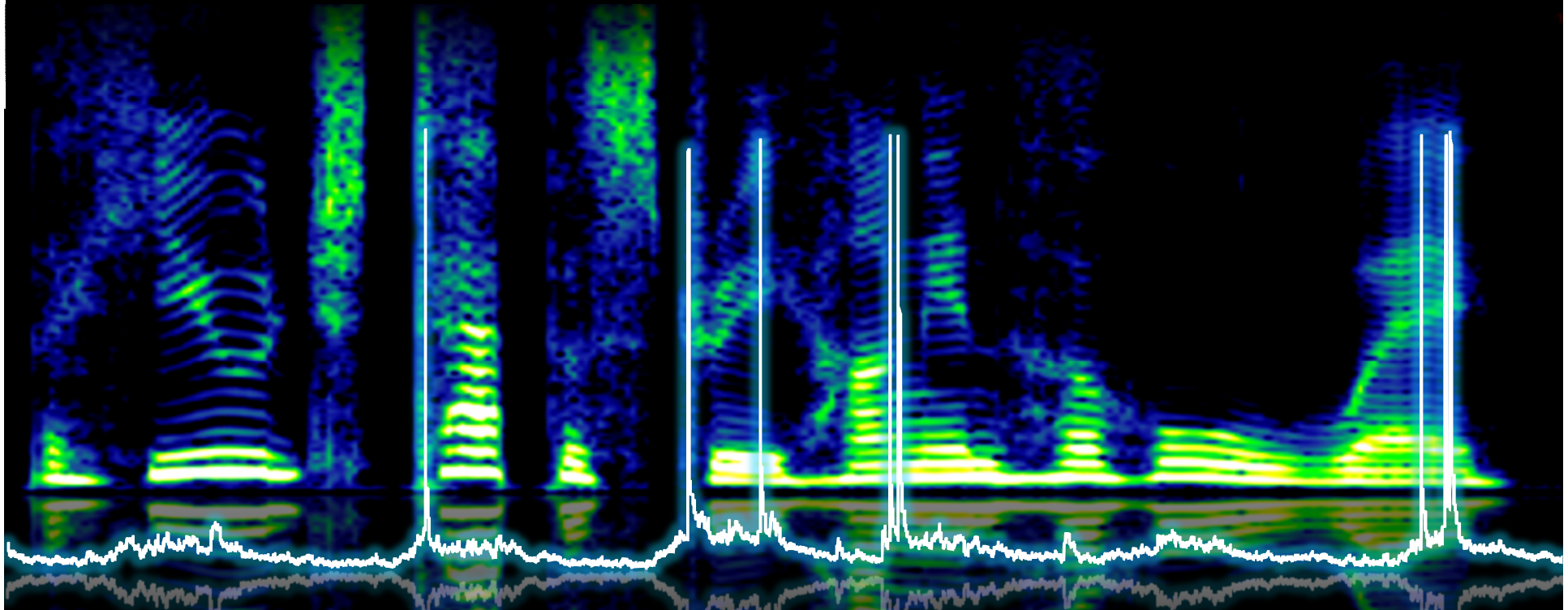


WHY DO HEARING AIDS FAIL TO RESTORE NORMAL AUDITORY PERCEPTION?

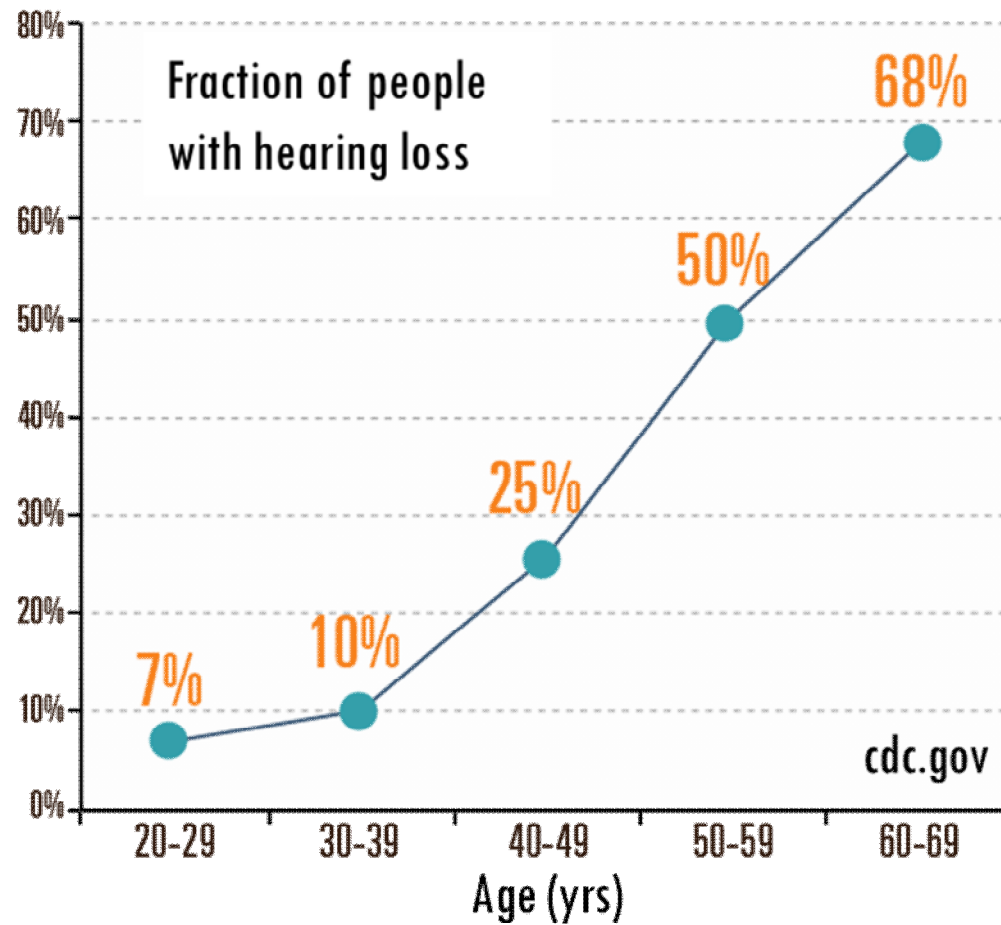
Nicholas A. Lesica
Ear Institute
University College London

www.lesicalab.com



HEARING LOSS

Death, taxes ... and hearing loss



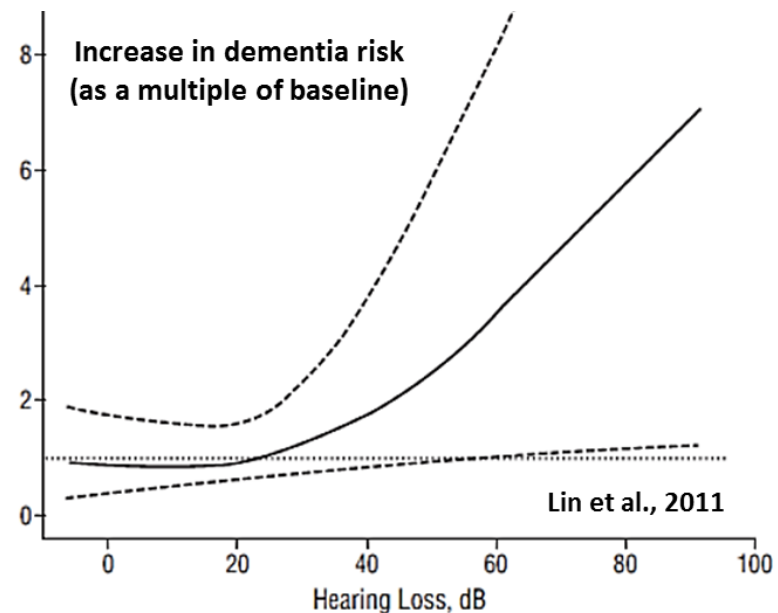
Communication problems, social isolation, and more ...



Hearing loss linked to increased:

- Cognitive decline (Lin et al., 2013)
- Dementia (Lin et al., 2011)
- Mortality (Contrera et al., 2015)

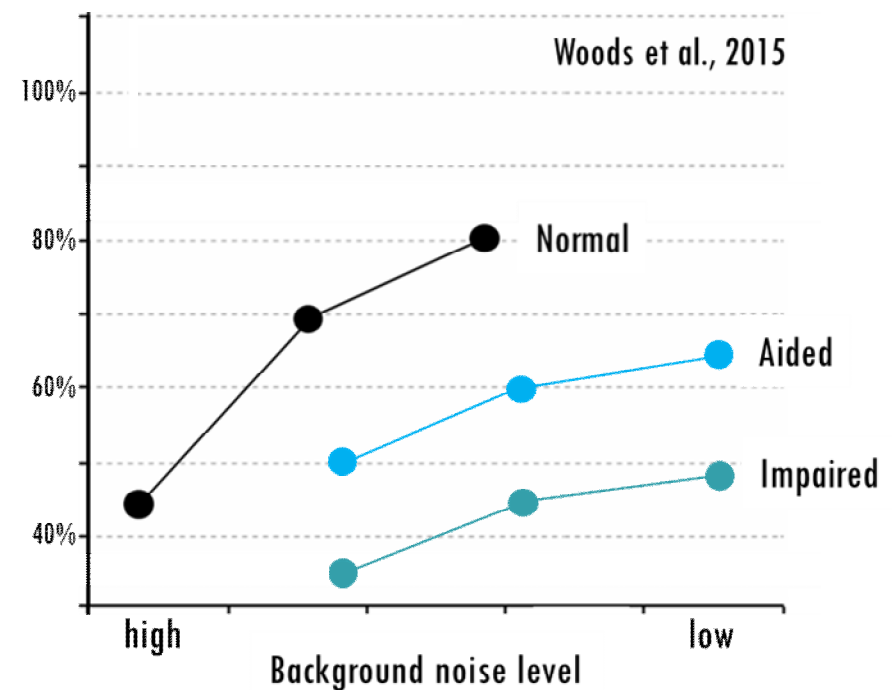
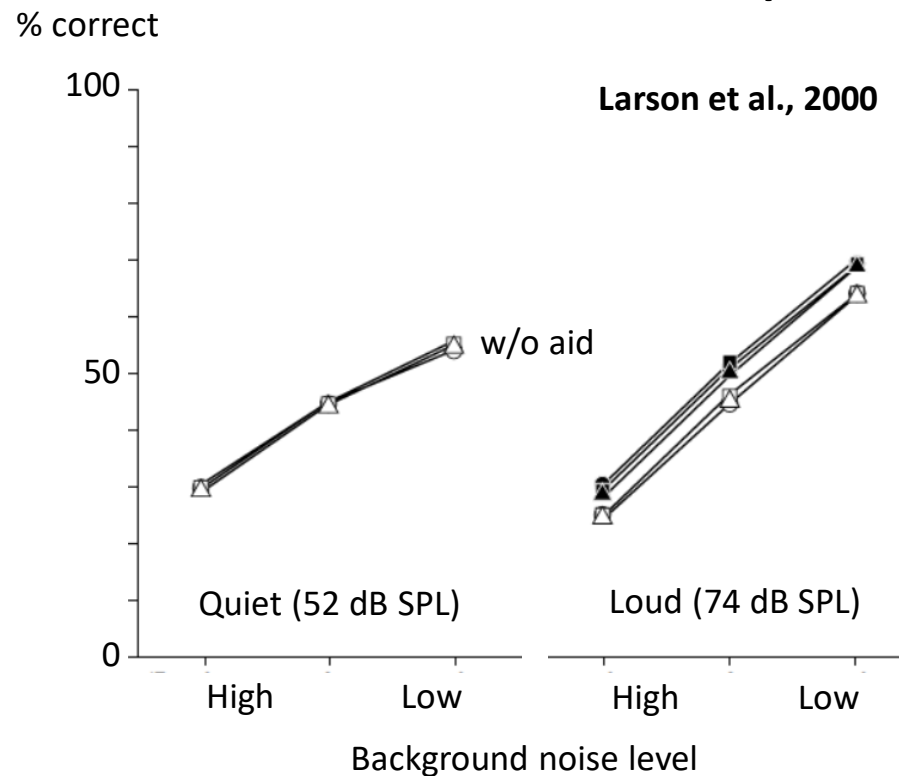
Associated costs in the US expected to exceed \$50 billion annually by 2030 (Stucky, 2010)



HEARING LOSS

Hearing aids help, but not in noisy environments

Two studies of speech recognition performance



“I can hear you, but I can’t understand you”

Part I:

What does the ear do? The simple answer ...

What is hearing loss? The simple answer ...

What do hearing aids do?

Part II:

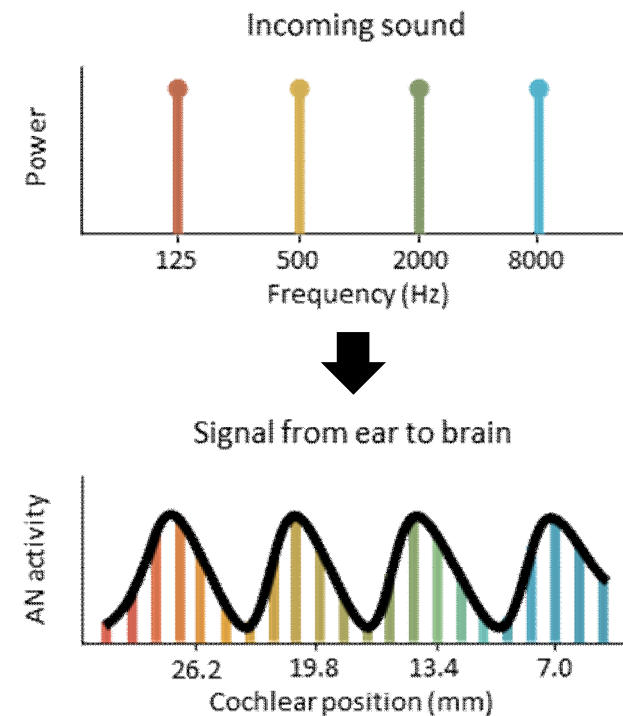
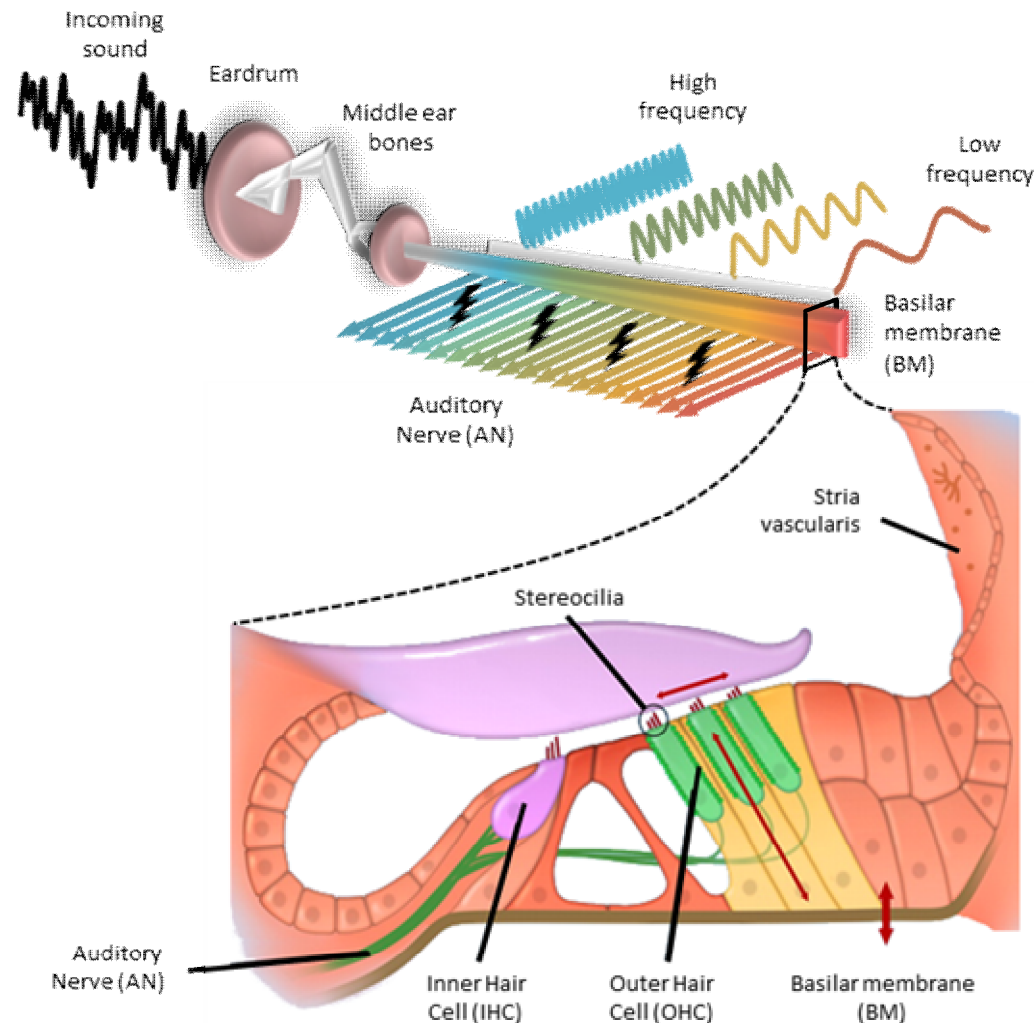
What does the ear do? The real answer ...

What is hearing loss? The real answer ...

What should hearing aids do?

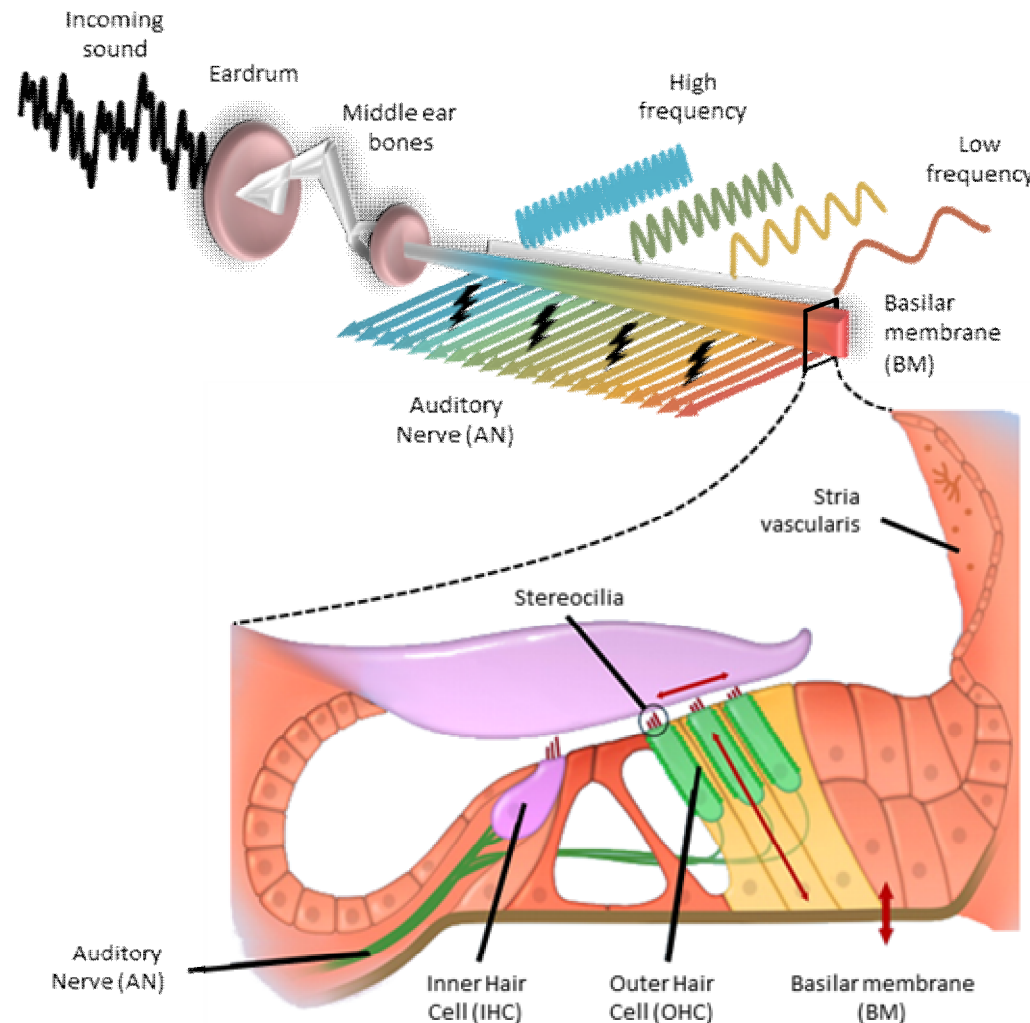
WHAT DOES THE EAR DO?

The simple answer: frequency analysis and amplification/compression

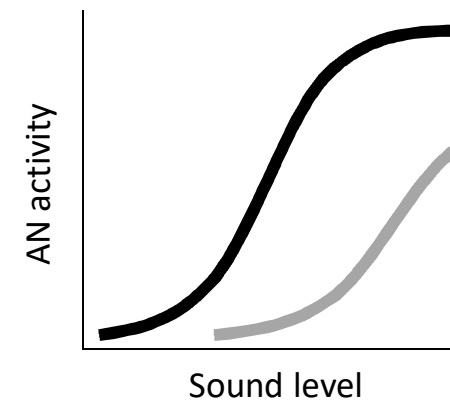
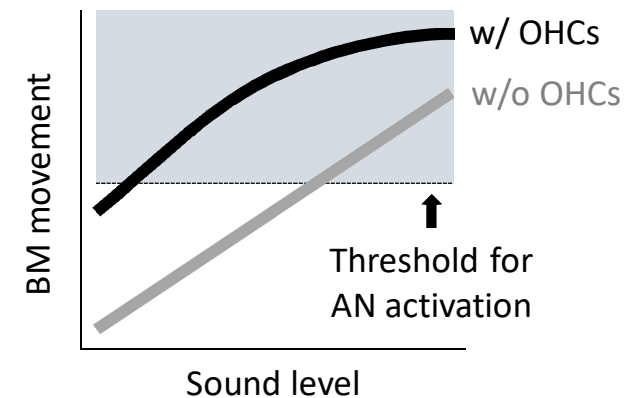


WHAT DOES THE EAR DO?

The simple answer: frequency analysis and amplification/compression



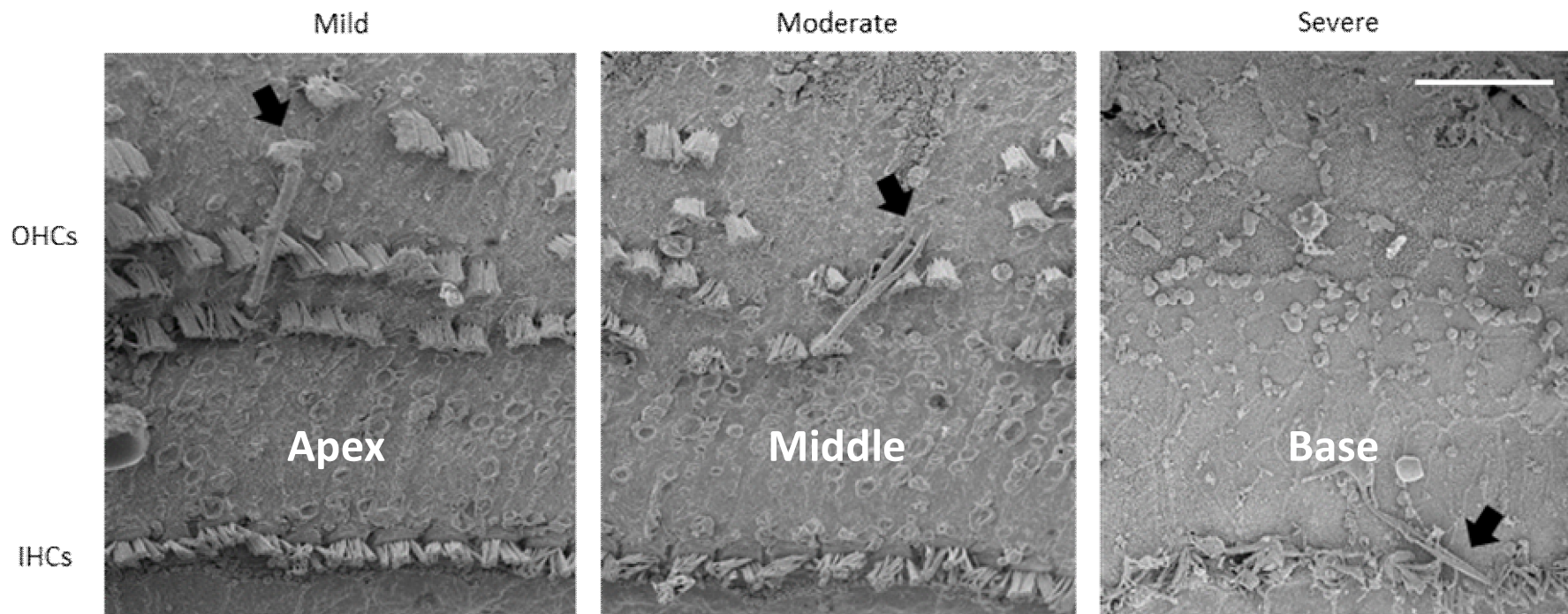
Outer hair cells (OHCs)
amplify weak sounds



WHAT IS HEARING LOSS?

The simple answer: a decrease in sensitivity

Hair cell pathologies in older people

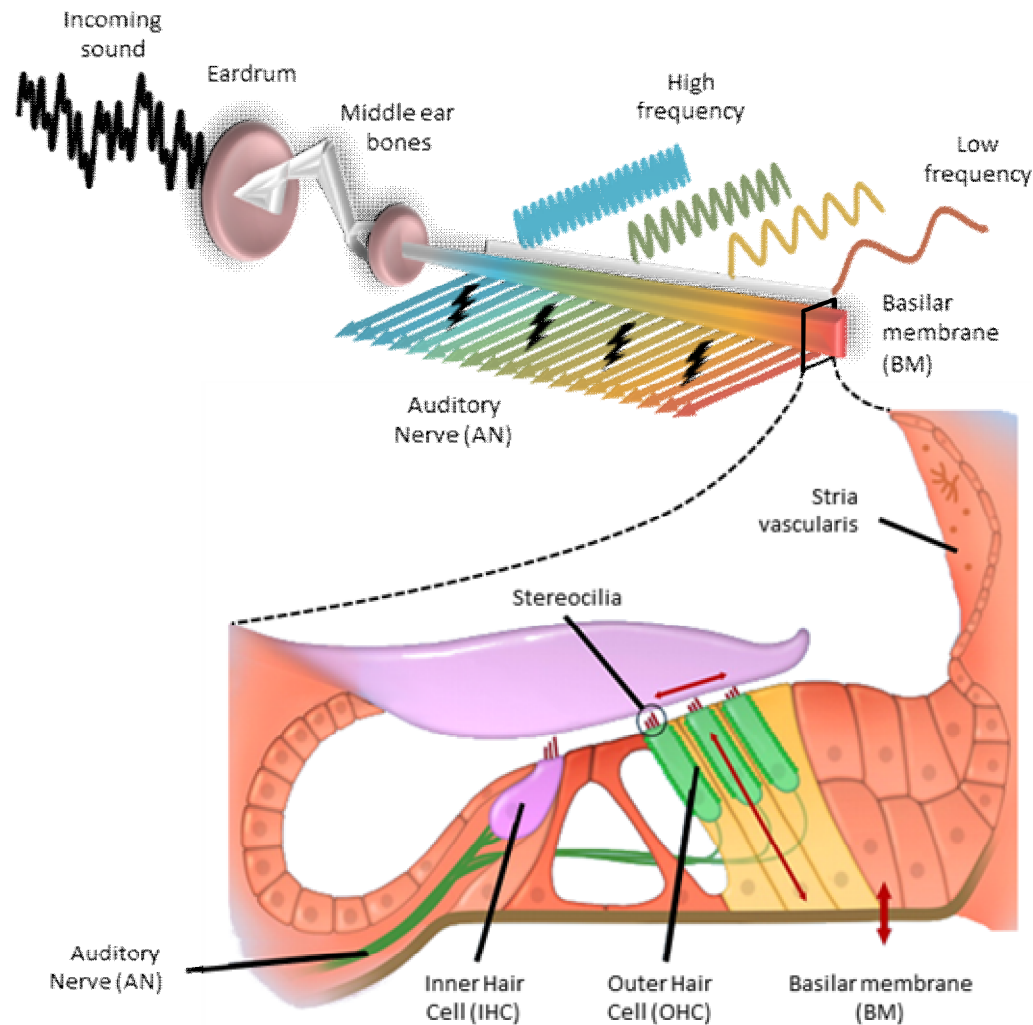


From UCL Ear Institute

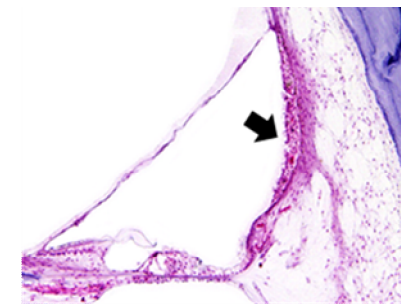
- OHCs more vulnerable than IHCs
- Base (high freq.) more vulnerable than apex (low freq.)

WHAT IS HEARING LOSS?

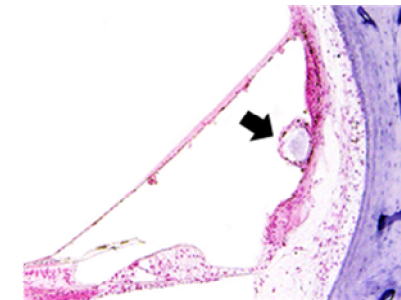
The simple answer: a decrease in sensitivity



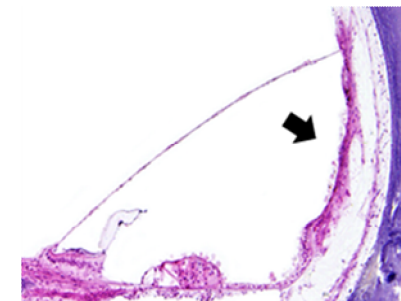
Strial degeneration in older people



Mild



Moderate

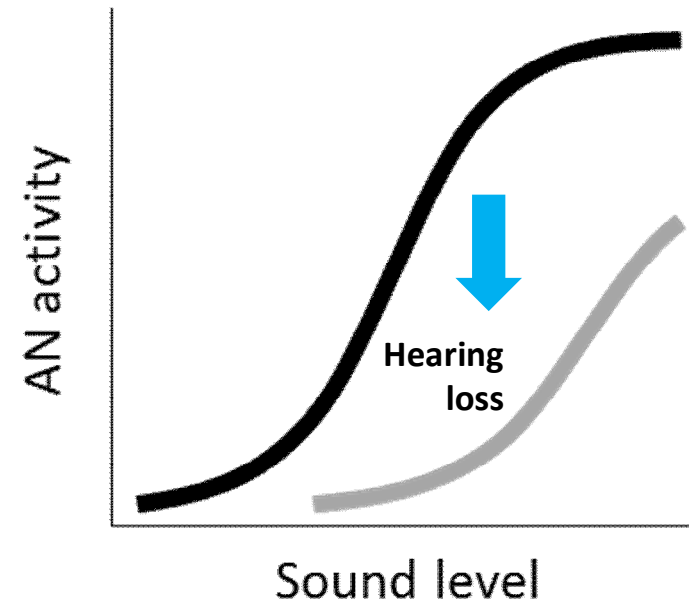
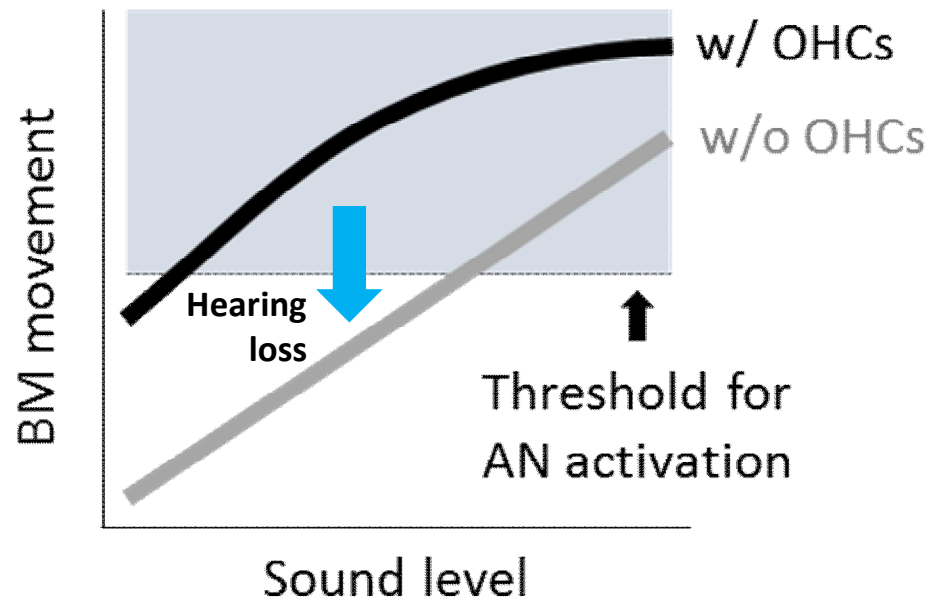


Severe

From Mass Eye and Ear

WHAT IS HEARING LOSS?

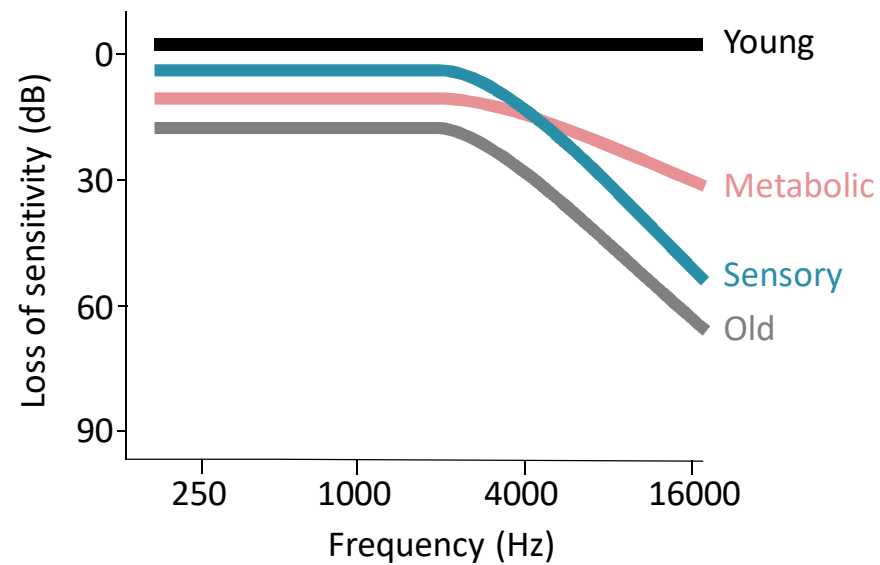
The simple answer: a decrease in sensitivity



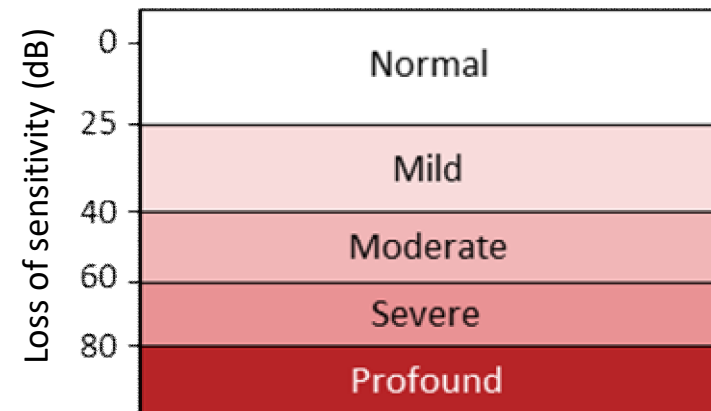
WHAT IS HEARING LOSS?

The simple answer: a decrease in sensitivity

Frequency dependence of sensitivity loss

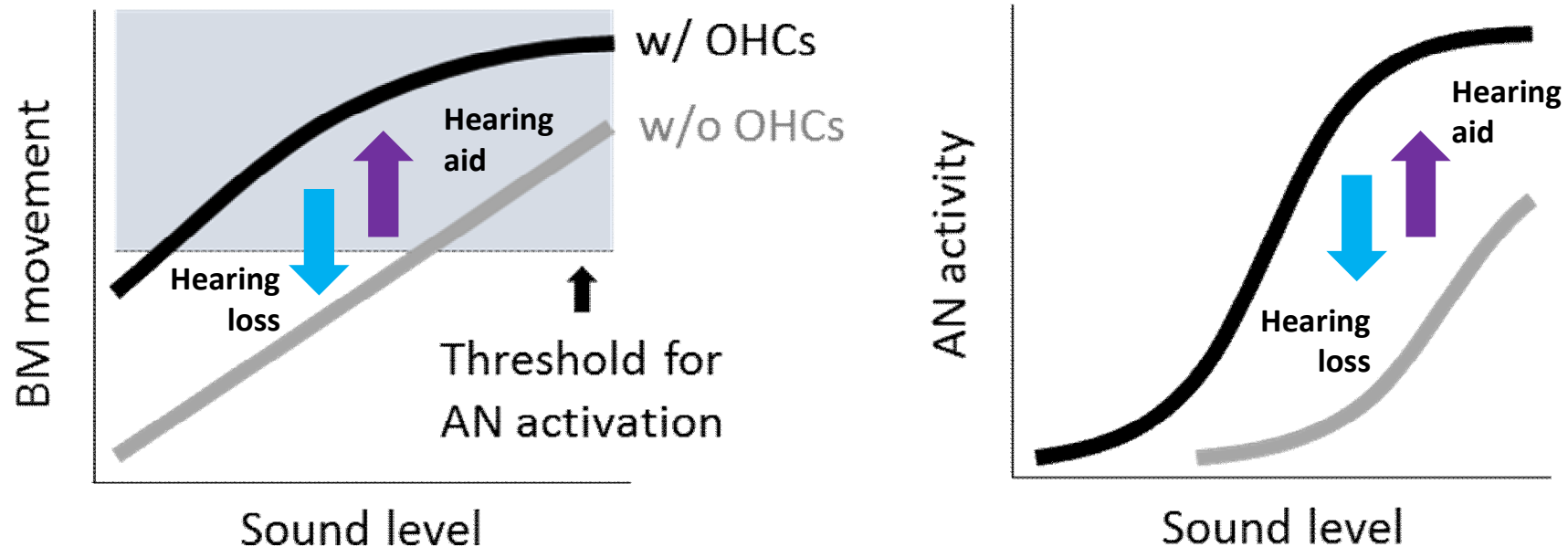


WHO hearing loss grades



WHAT DO HEARING AIDS DO?

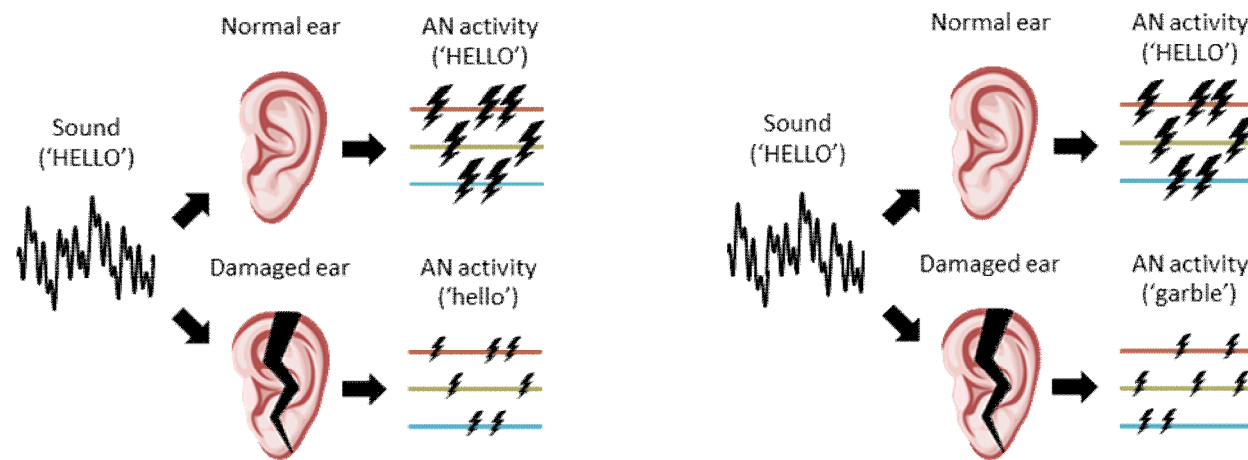
The answer: restore sensitivity ... but not much else



- Most modern hearing aids implement frequency-dependent 'wide dynamic range compression'
- Other bells and whistles – speech enhancement, frequency lowering, directional microphones – provide little real-world benefit

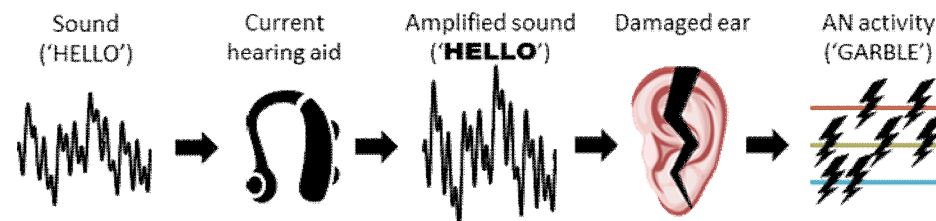
WHY DO HEARING AIDS FAIL?

Hearing loss is much more than just a sensitivity problem



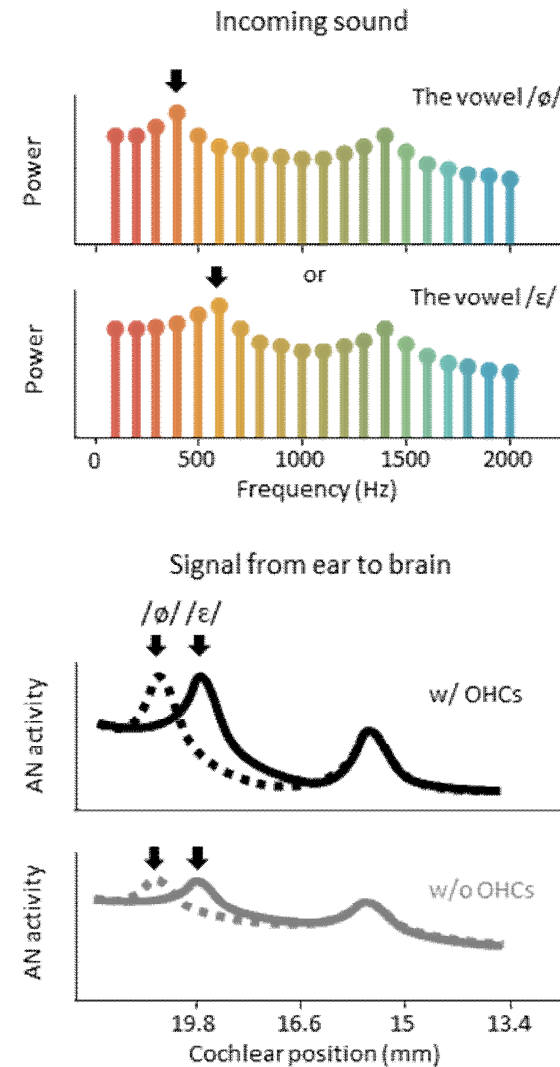
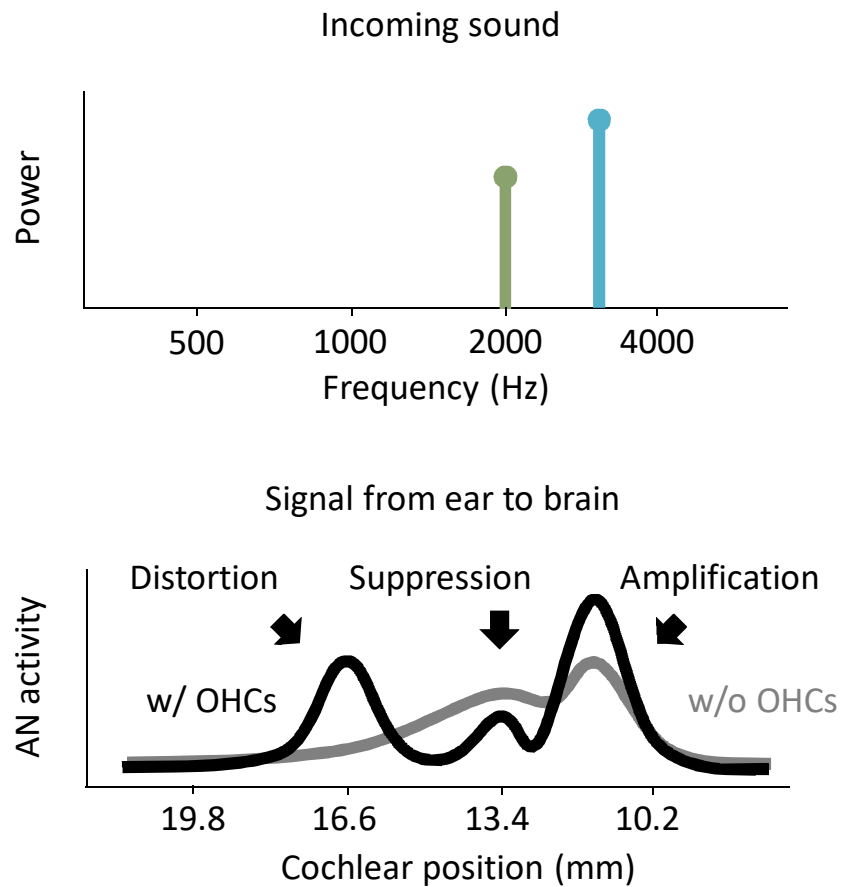
... it is a profound distortion of the signal from ear to brain

... that hearing aids fail to correct



WHAT DOES THE EAR DO?

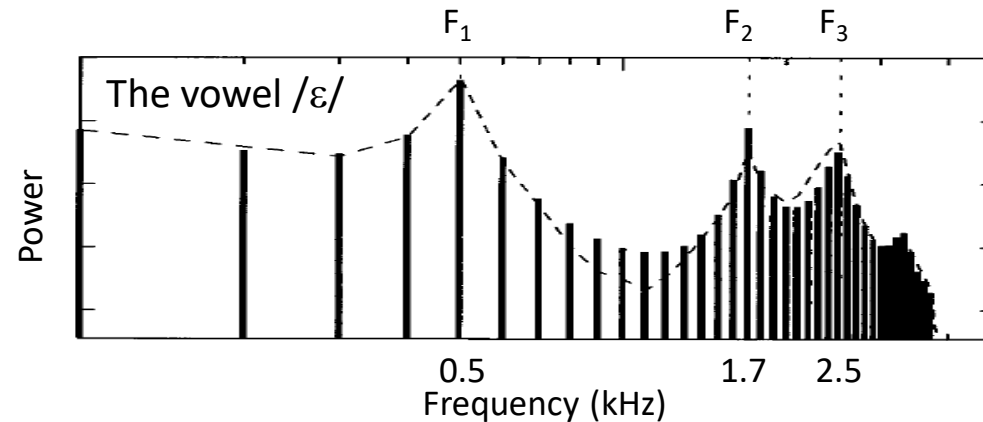
The real answer: complex, nonlinear signal processing



WHAT IS HEARING LOSS?

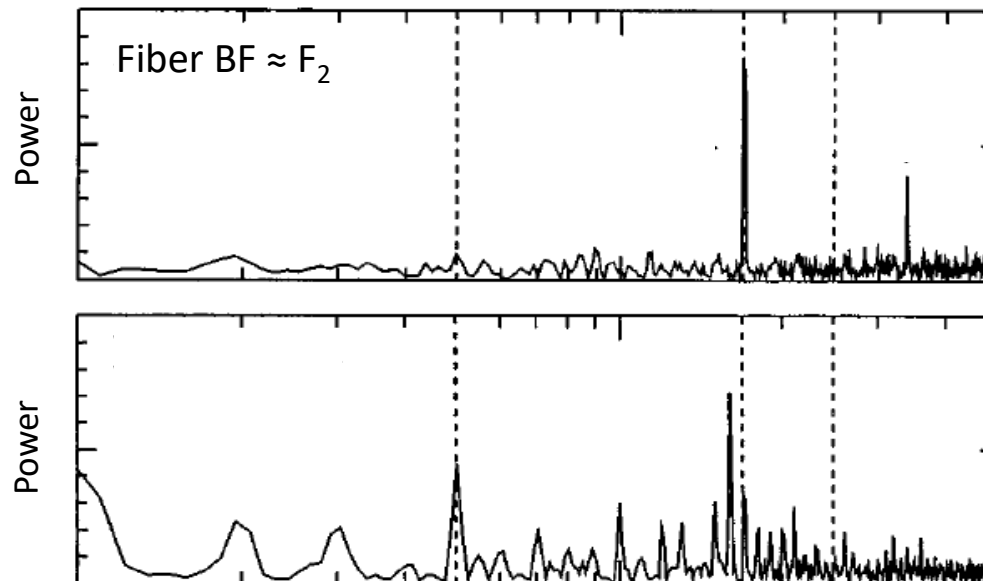
The real answer: a profound distortion of the signal from ear to brain

Power spectrum
of incoming sound



From Young, 2012

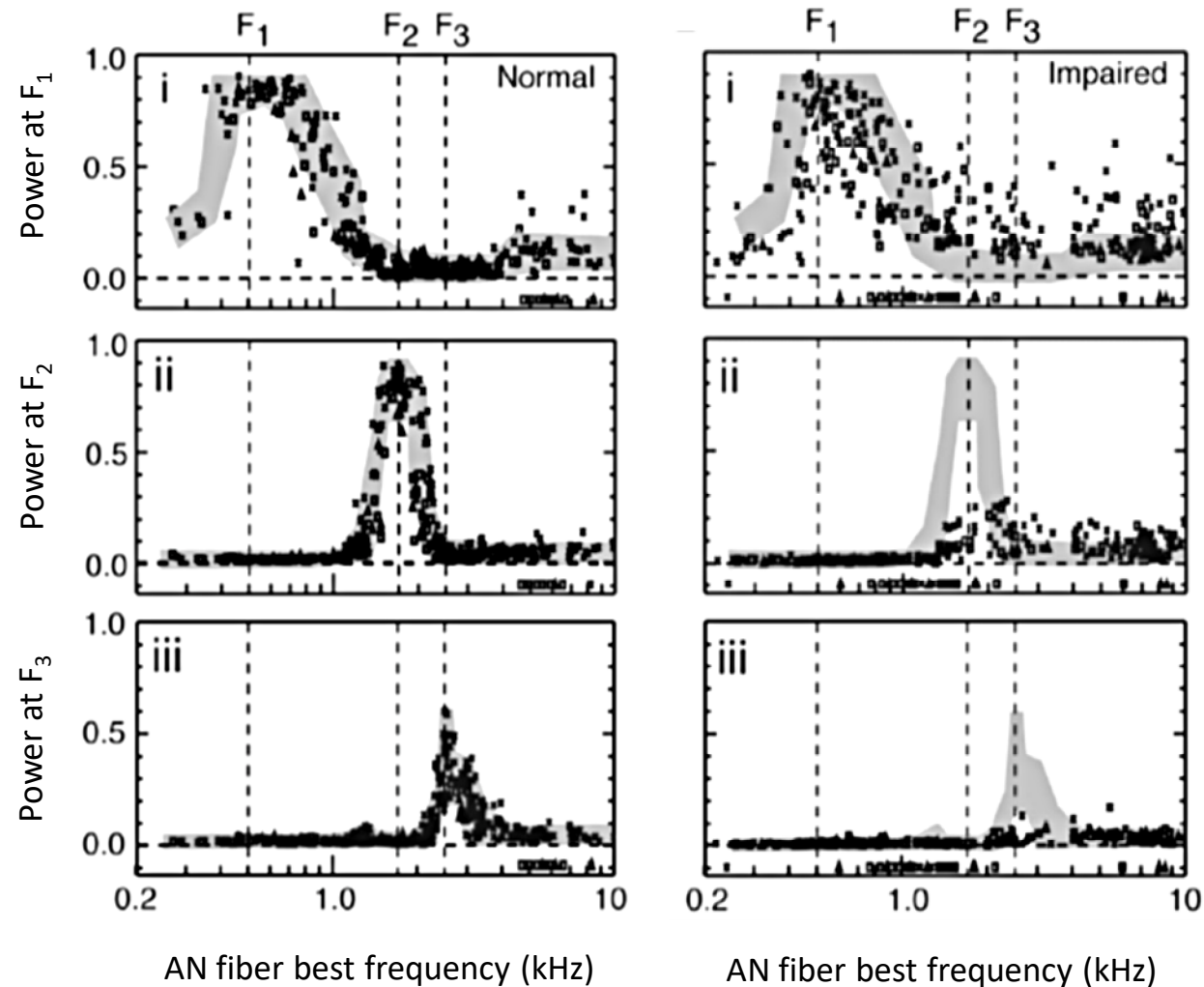
Power spectrum
of AN activity



WHAT IS HEARING LOSS?

The real answer: a profound distortion of the signal from ear to brain

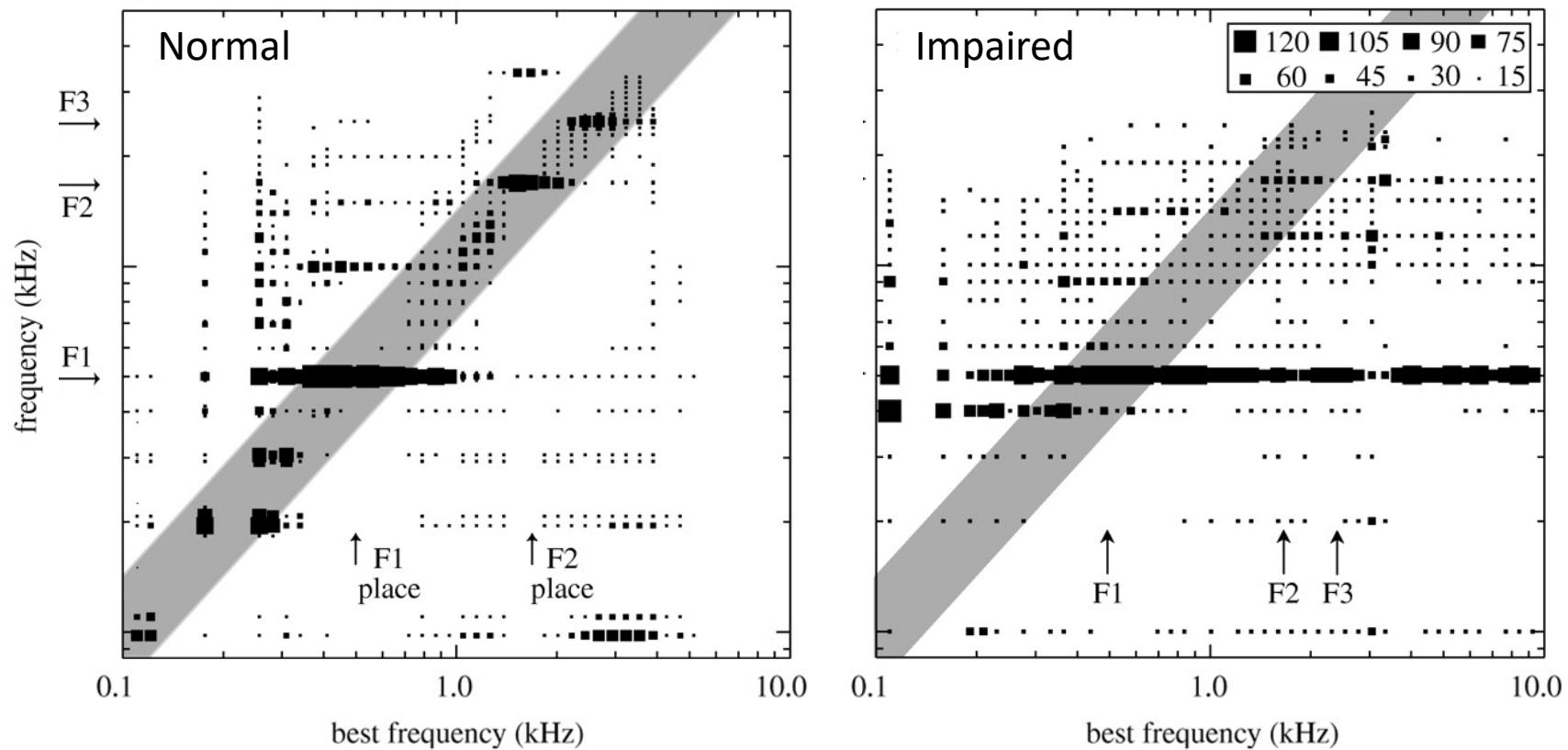
Power across
AN population



WHAT IS HEARING LOSS?

The real answer: a profound distortion of the signal from ear to brain

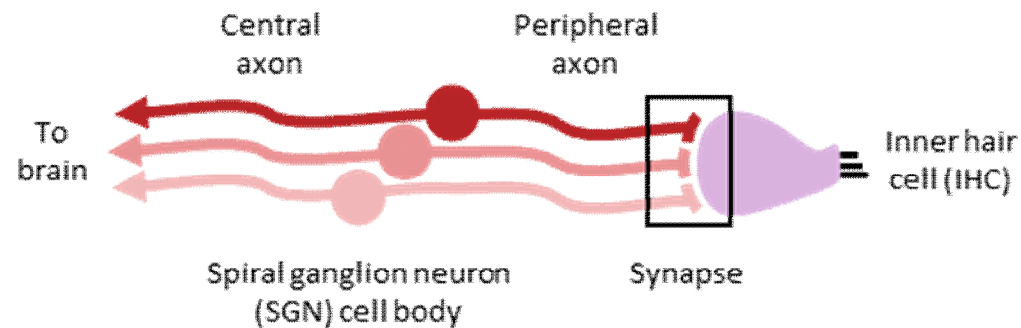
Population representation of /ε/



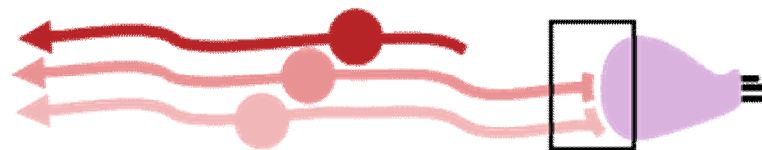
HIDDEN HEARING LOSS

Hearing loss also arises from changes to the changes to the AN itself

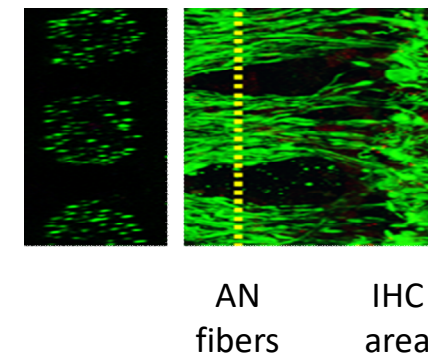
Cochlear synaptopathy



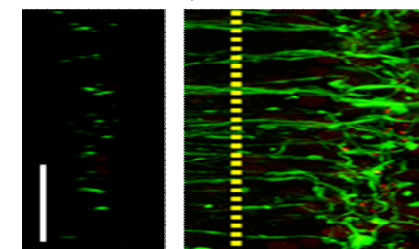
Hidden hearing loss (HHL)



Synaptopathy in older people



Mild



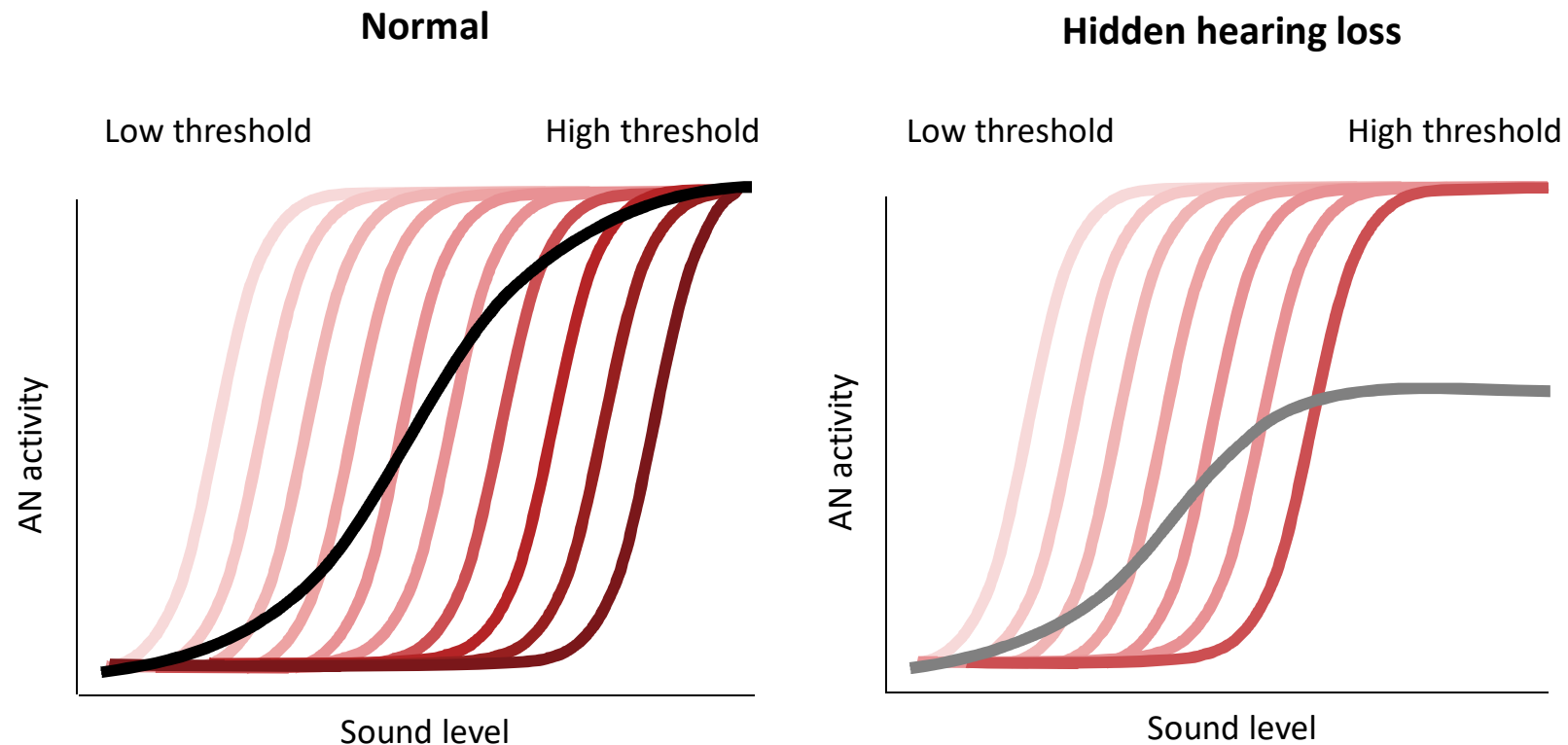
Severe

From Viana et al., 2015

Problem: high-threshold AN fibers are particularly vulnerable

HIDDEN HEARING LOSS

Hearing loss also arises from changes to the changes to the AN itself

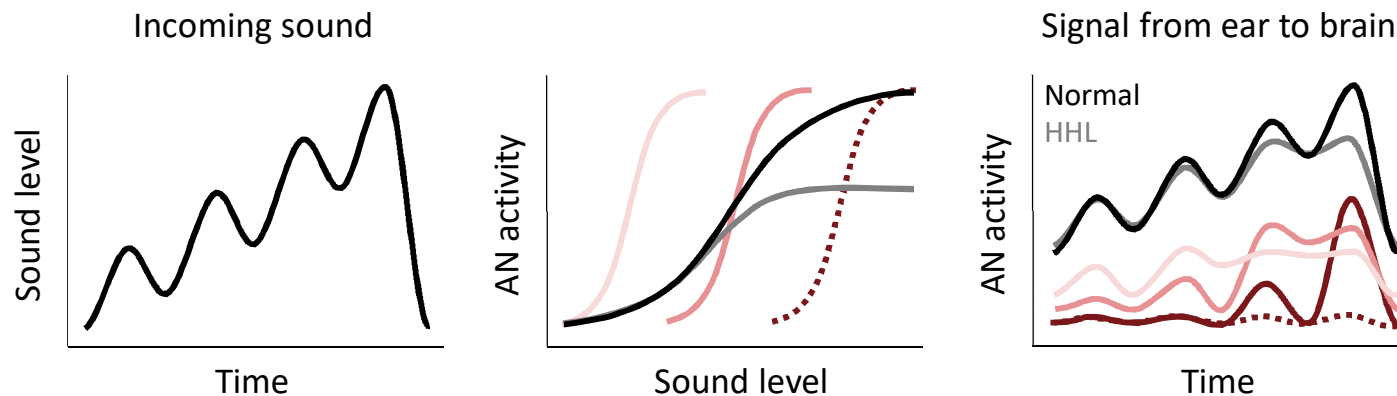


Hidden hearing loss decreases differential sensitivity at high levels

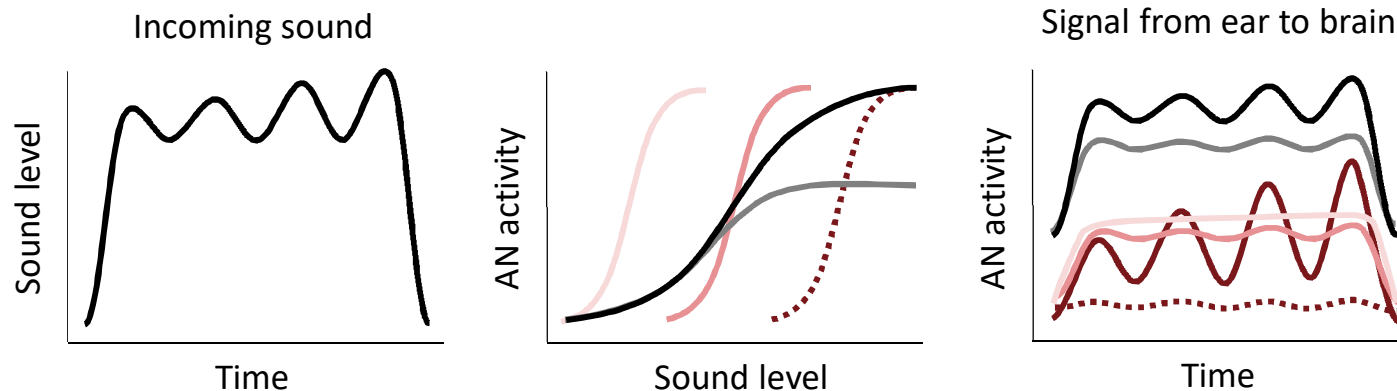
HIDDEN HEARING LOSS

Hearing loss also arises from changes to the changes to the AN itself

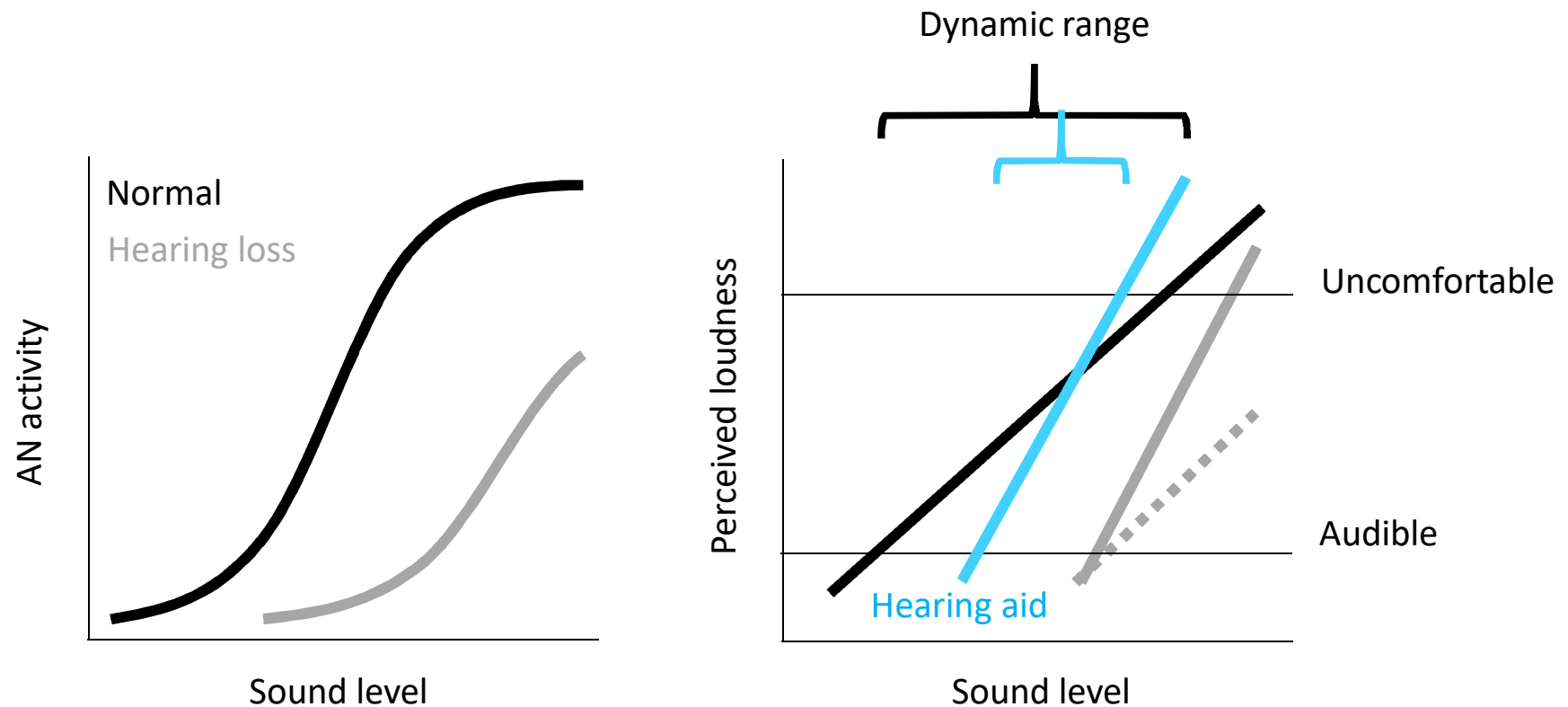
Sound with increasing level in quiet environment



Sound in noisy environment



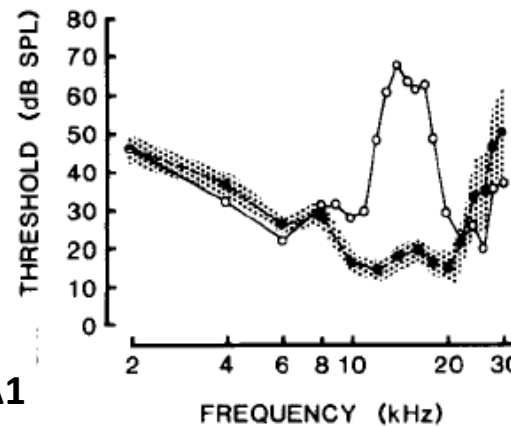
Homeostatic response to hearing loss causes “loudness recruitment”



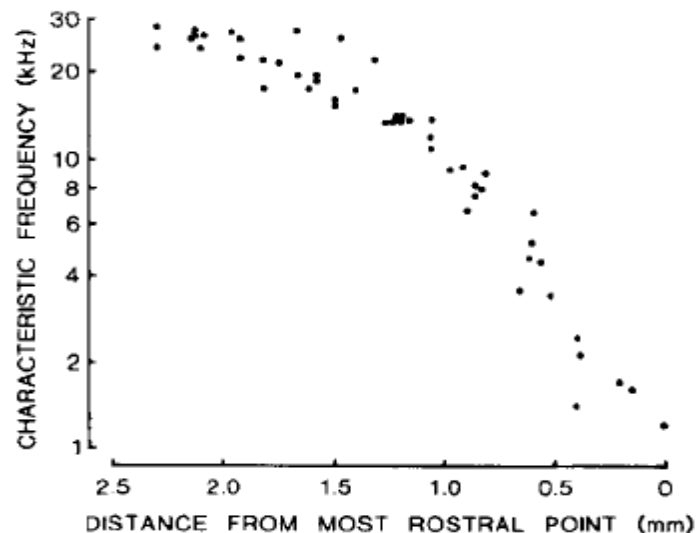
Central changes result in rapid growth of loudness with level ...
leaving little dynamic range for hearing aids

Hearing loss causes cortical map reorganization

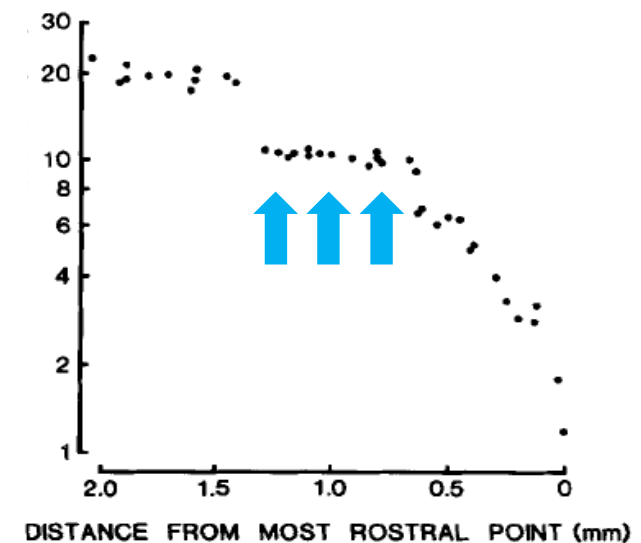
Thresholds before and after noise trauma



Tonotopic map in normal A1

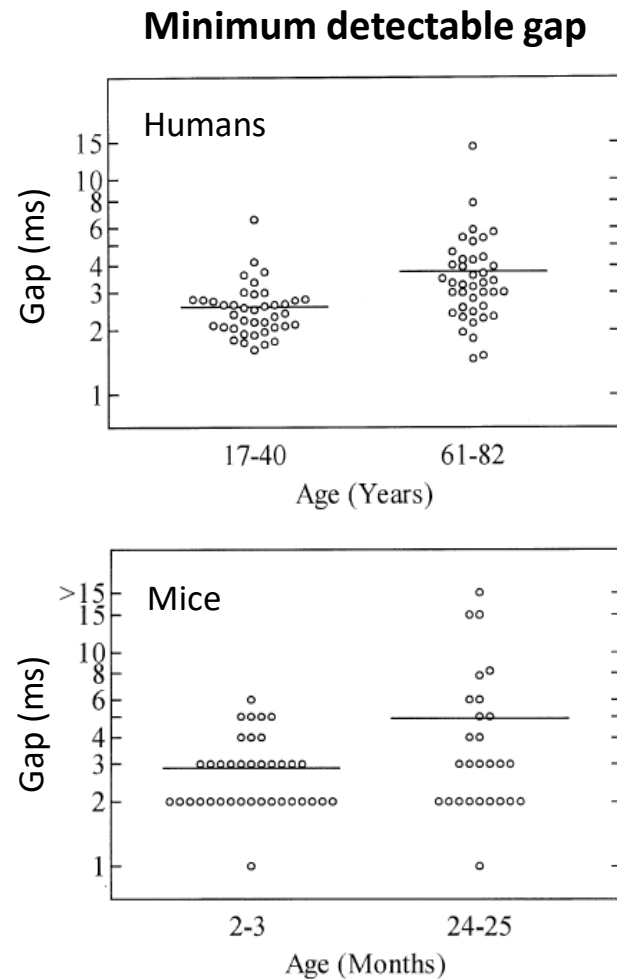


Tonotopic map after trauma

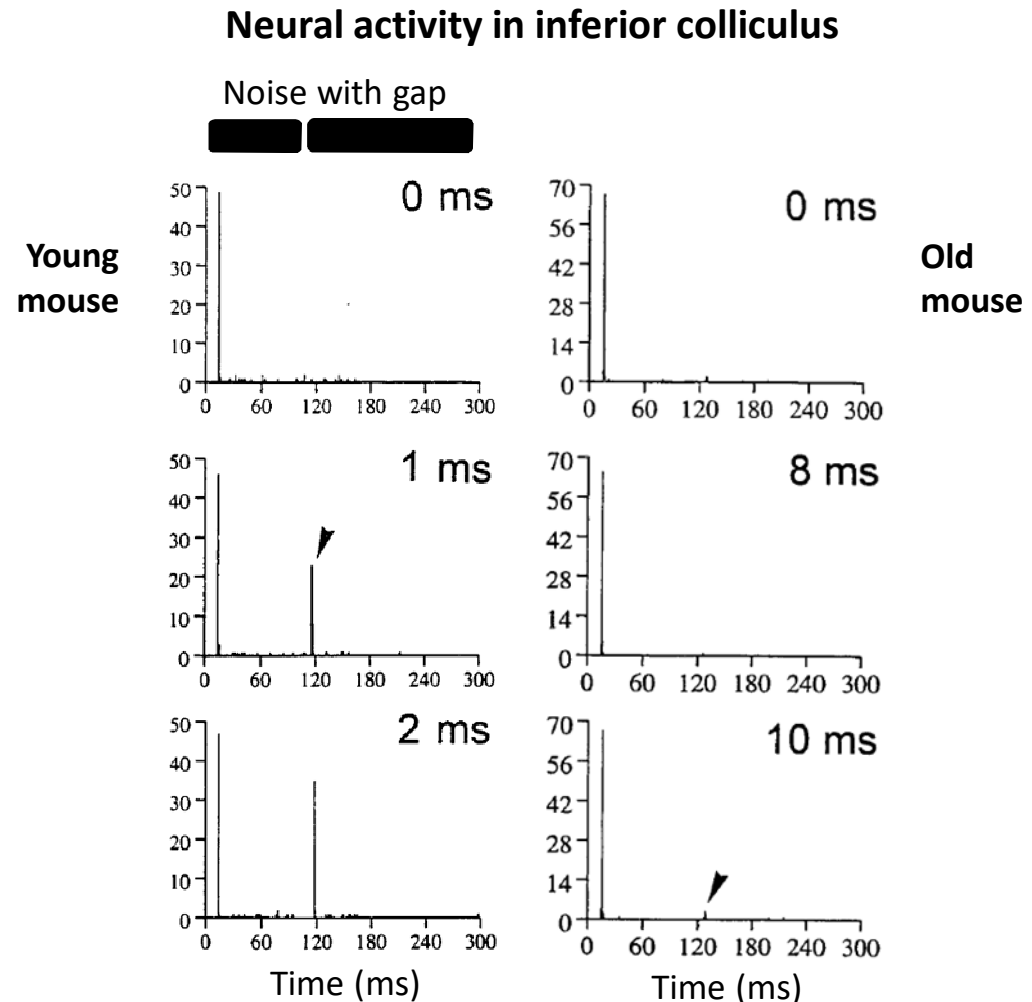


From Robertson
and Irvine, 1989

Age-related hearing loss causes a decrease in temporal acuity



From Barsz et al., 2002

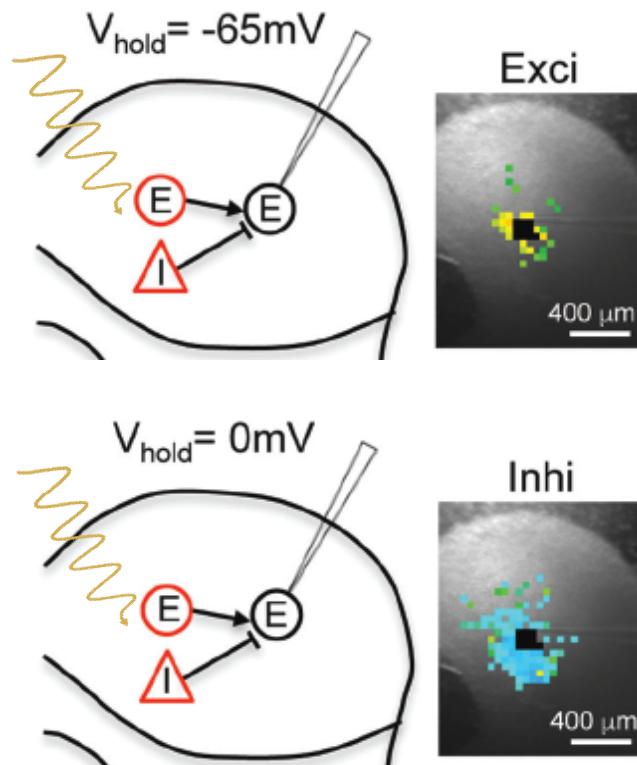


From Walton et al., 1998

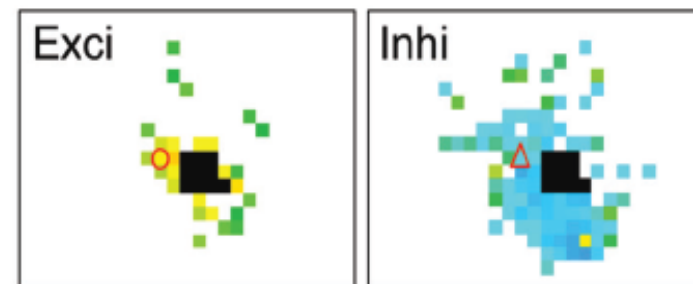
CHANGES IN E-I BALANCE

Hearing loss causes a decrease in inhibition

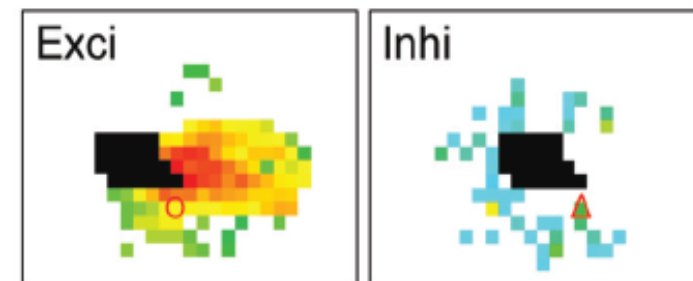
Mapping synaptic inputs



Normal

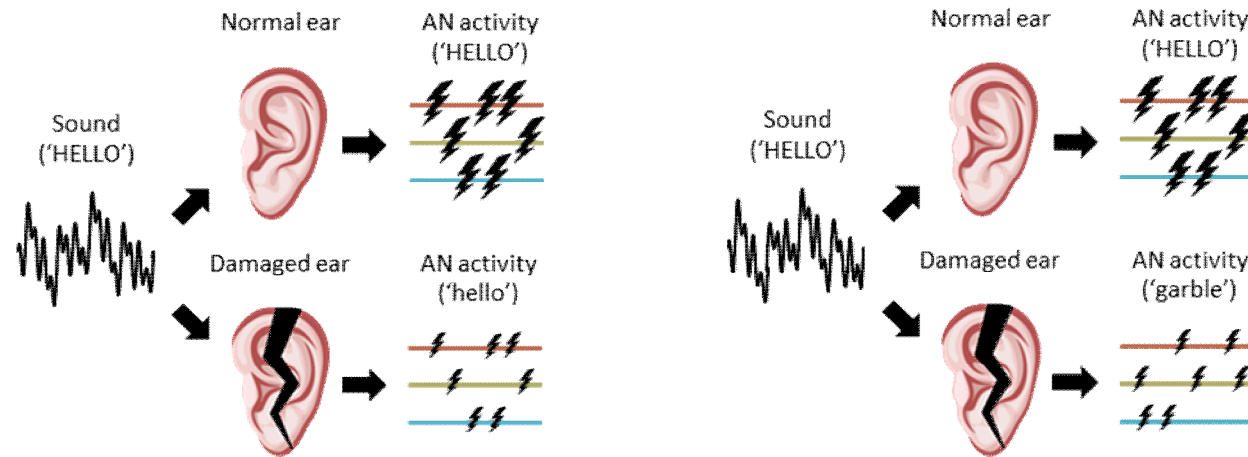


Hearing impaired w/ gap detection deficit

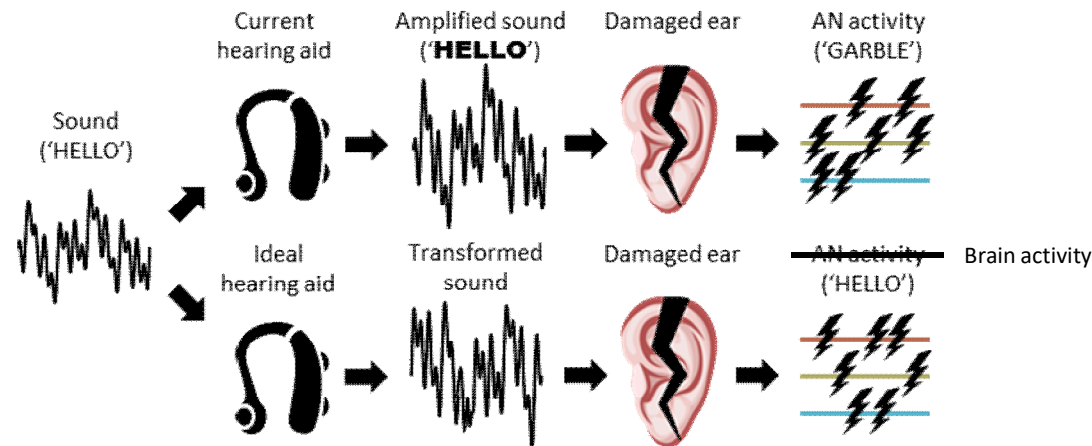


WHAT SHOULD DO HEARING AIDS DO?

Hearing loss is a profound distortion of the signal from ear to brain

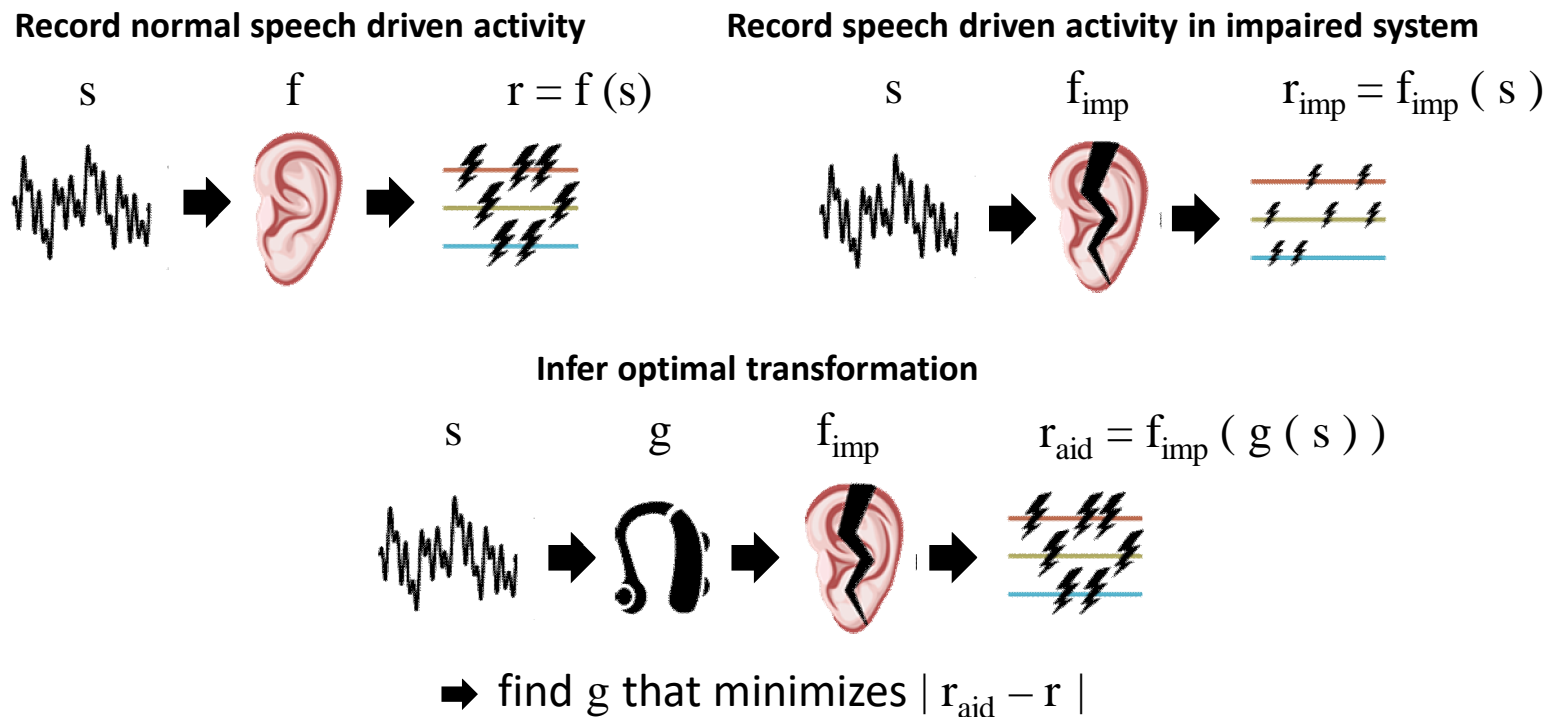


... that hearing aids should aim to correct



WHAT SHOULD DO HEARING AIDS DO?

How can the necessary transformation be identified?



Challenges:

- f , f_{imp} , g highly nonlinear and complex, but machine learning to the rescue?
- Huge data requirements, but large-scale recordings can meet them

WHY DO HEARING AIDS FAIL TO RESTORE NORMAL AUDITORY PERCEPTION?

Nicholas A. Lesica
Ear Institute
University College London

www.lesicalab.com

