

**Towards a comprehensive view of
B cell biology at
single-cell resolution**

Christian E. Busse

Division of B Cell Immunology
German Cancer Research Center

Acknowledgements

DKFZ / MPI InfBiol

Katharina Imkeller

Stefan Riebel

Rajagopal Murugan

Hedda Wardemann

MPI Molecular Genetics

Irina Czogiel

Barbara Wilhelm

Peter Arndt

Funding

Max Planck Strategic Innovation Fund

Center for HIV/AIDS Vaccination Initiative

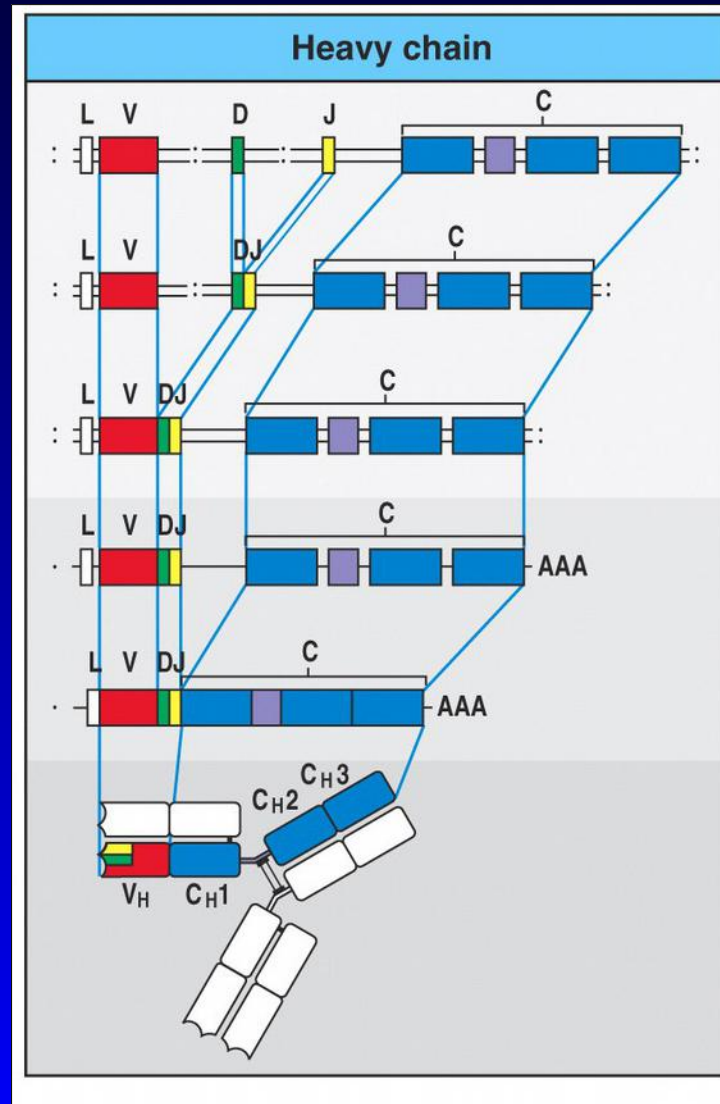
Some years earlier...

What is the size and the structure of the B cell repertoire?

What is the B cell repertoire?

The entirety of B cell antigen receptors that an individual has at its disposal at a given timepoint.

V(D)J recombination generates receptor diversity

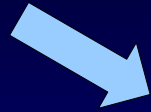


Some years earlier...

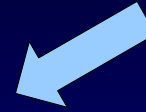
What is the size and the structure of the B cell repertoire?

Design criteria

Sequence

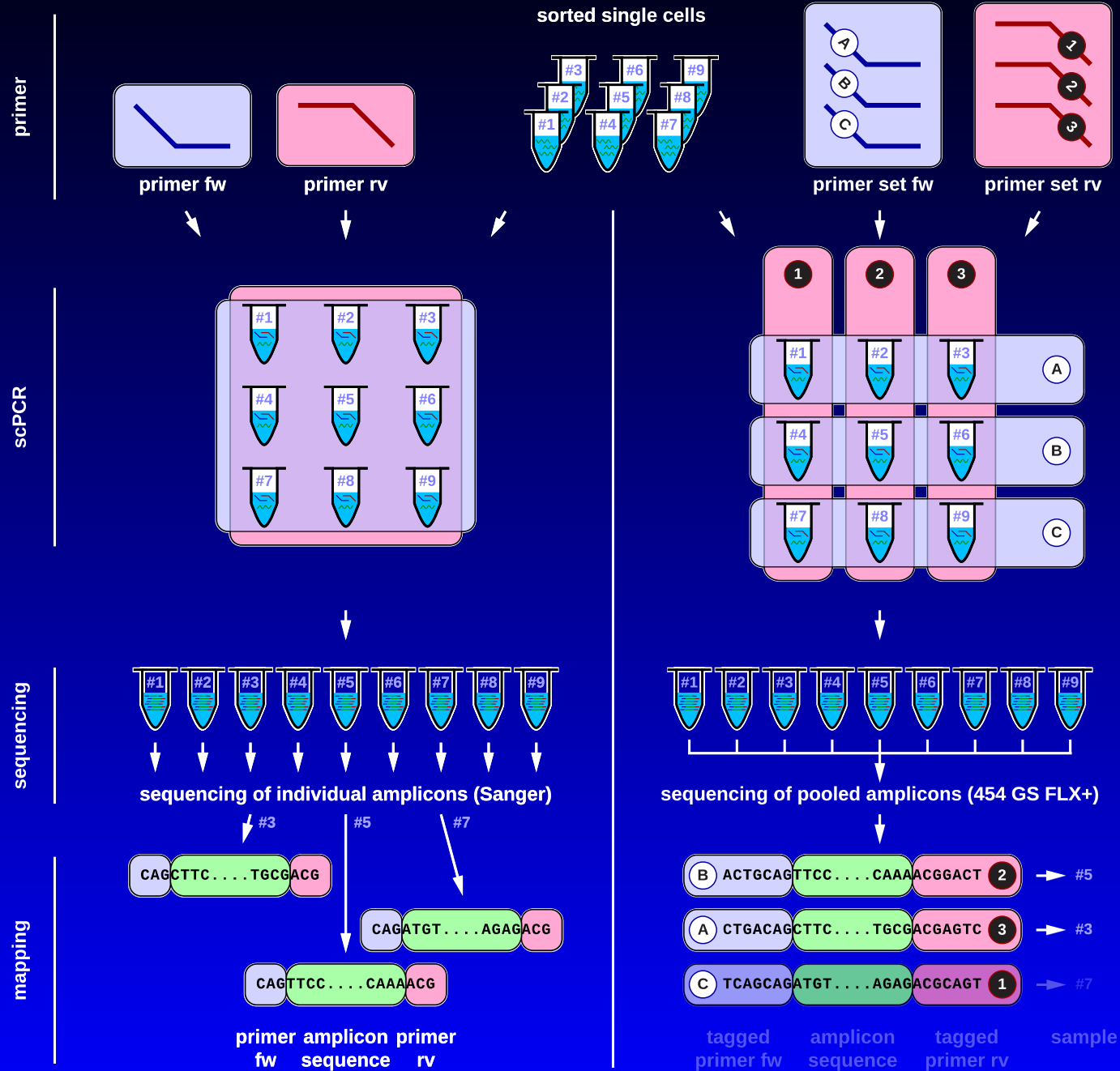


Reactivity

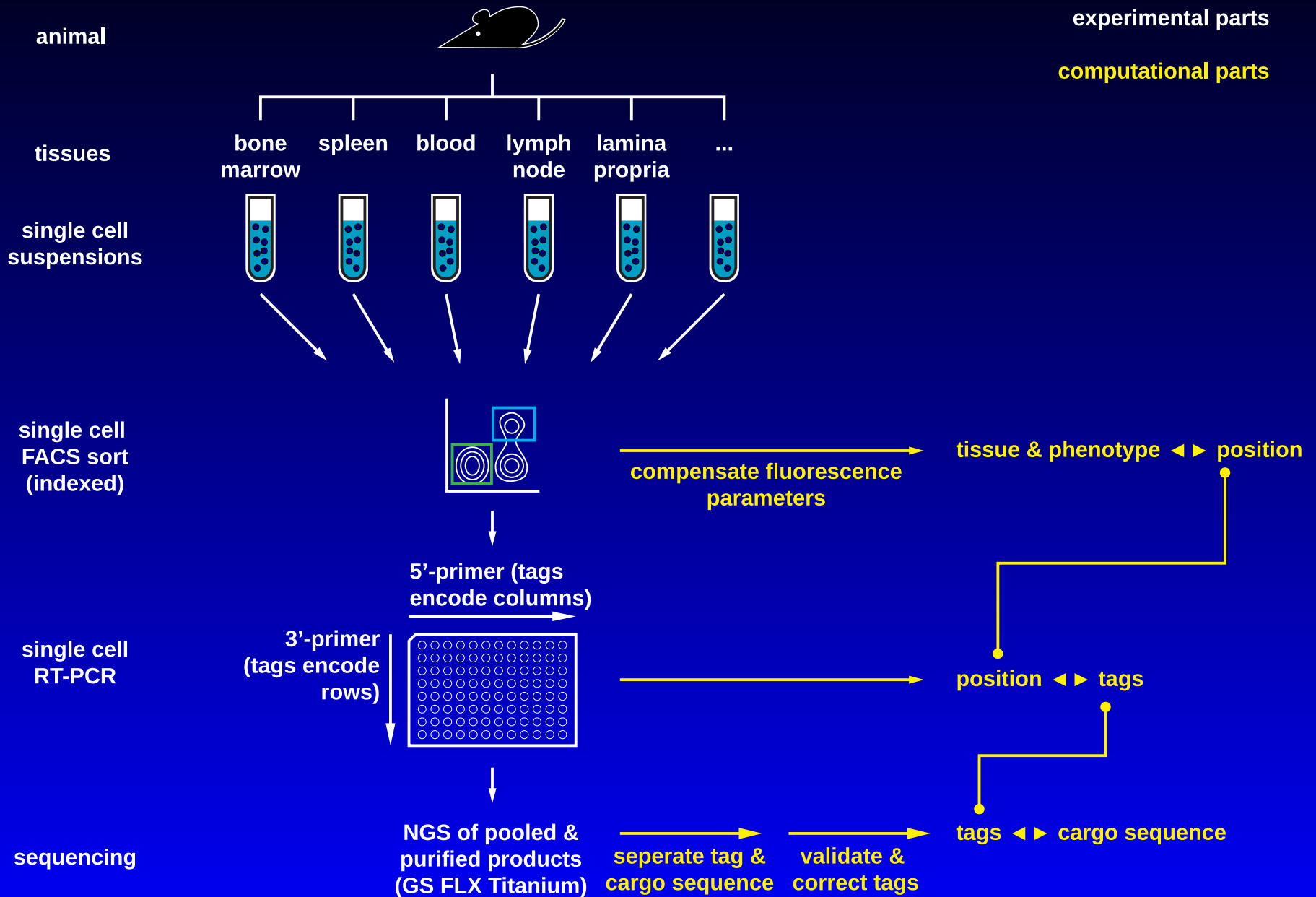


Phenotype

Conventional scPCR versus primer-matrix scPCR



Experimental workflow



Development cycles

- 1)
 - Matrix-PCR primer panels (mouse)
 - Automated liquid handling (Tecan EVO200 platform)
 - Index Sorting

- 2)
 - Matrix-PCR optimized primer set (human)
 - scPCR efficiency

- 3)
 - Modular data analysis toolkit
 - Relational database



[1] Busse et al. (2014) Eur J Immunol

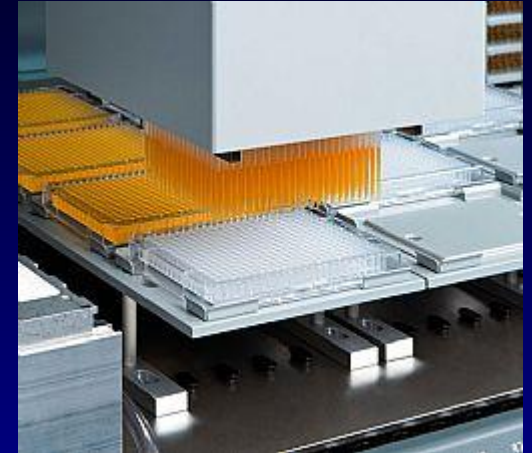
[2] Murugan et al. (2015) Eur J Immunol

[3] Imkeller et al. (accepted) BMC Bioinformatics

Cost & Throughput

Current state:

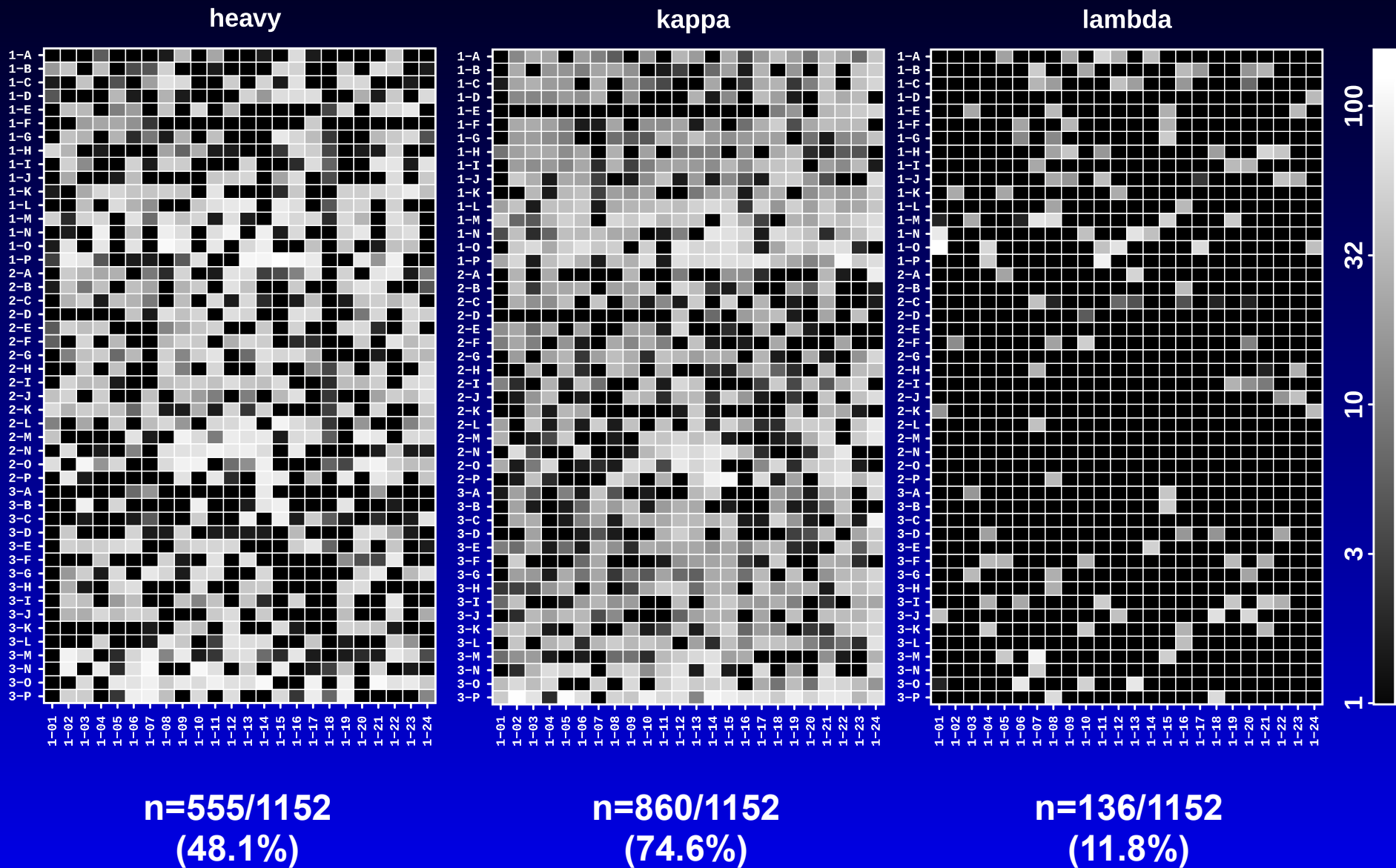
- Costs: 1 EUR per cell
- Processing capacity: 10,000 cells per week
- Processing time: 10 days + sequencing time



Ongoing development:

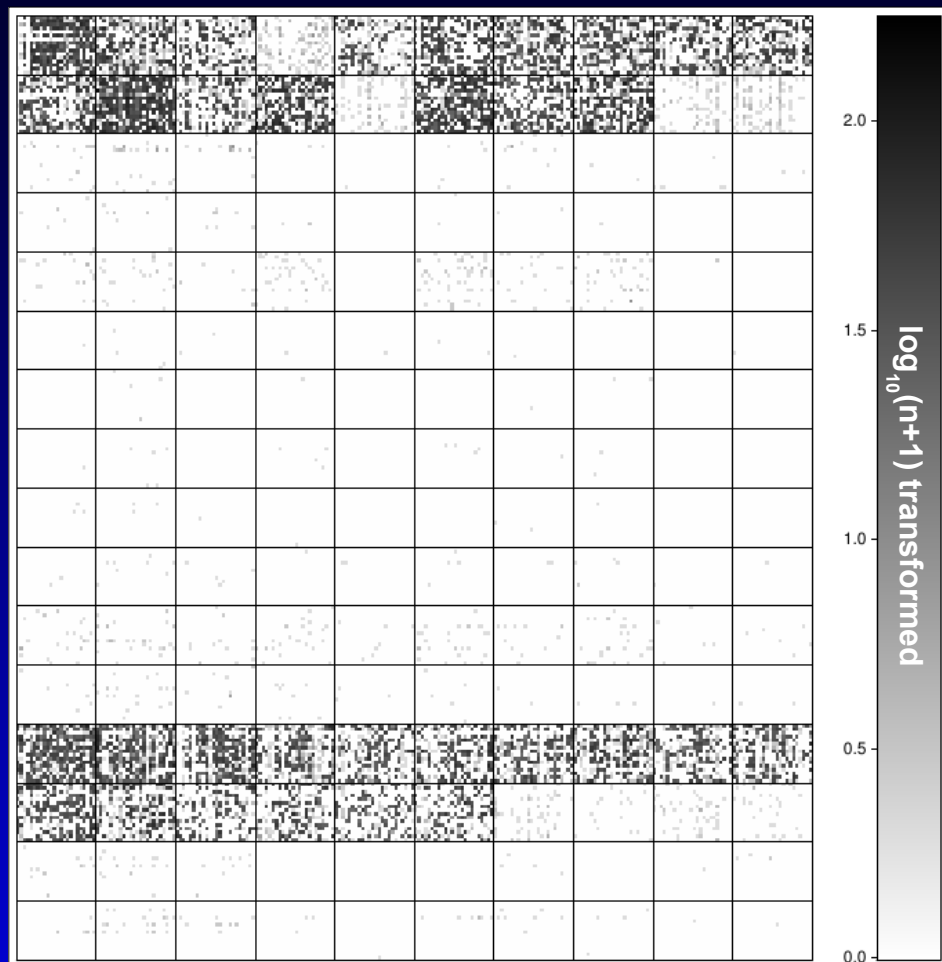
- switch from Roche/454 FLX+ to Illumina MiSeq
- TCR primer sets

Efficiency of 48x48 (2.25ki) primer matrix scPCR



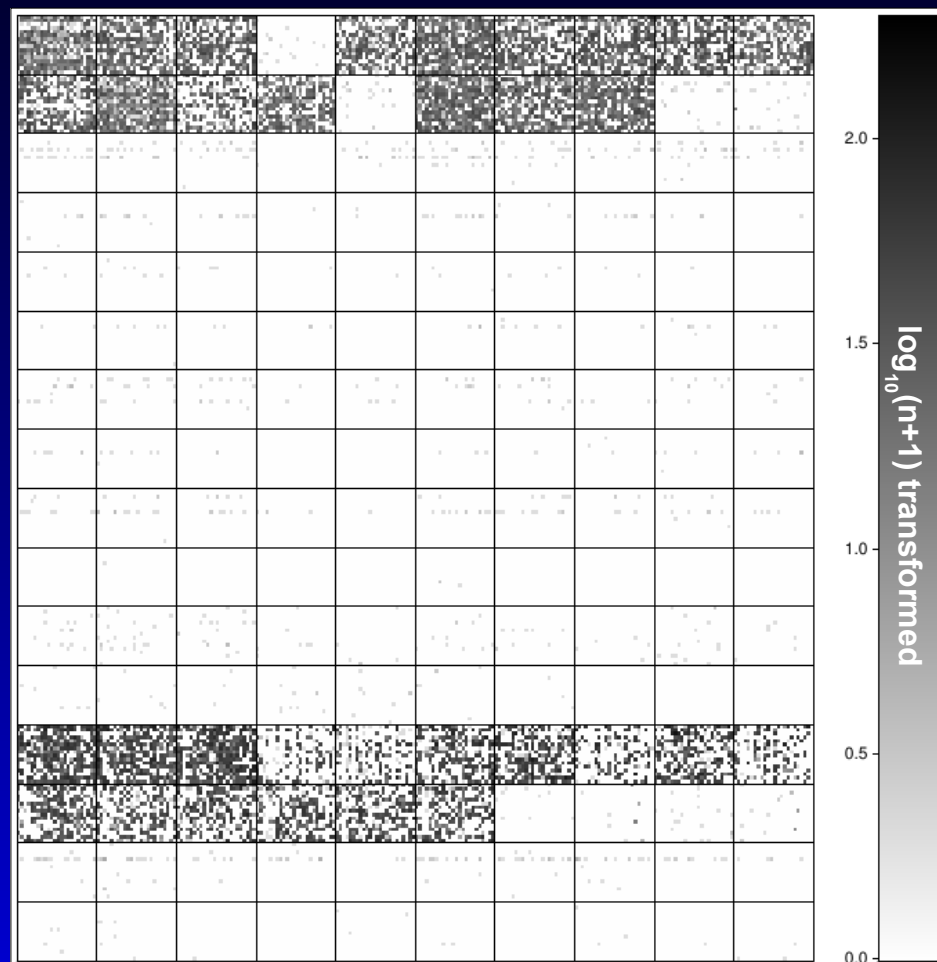
Efficiency of 240x256 (60ki) primer matrix scPCR

heavy (*Igh*)



40.3%
(n=12288)

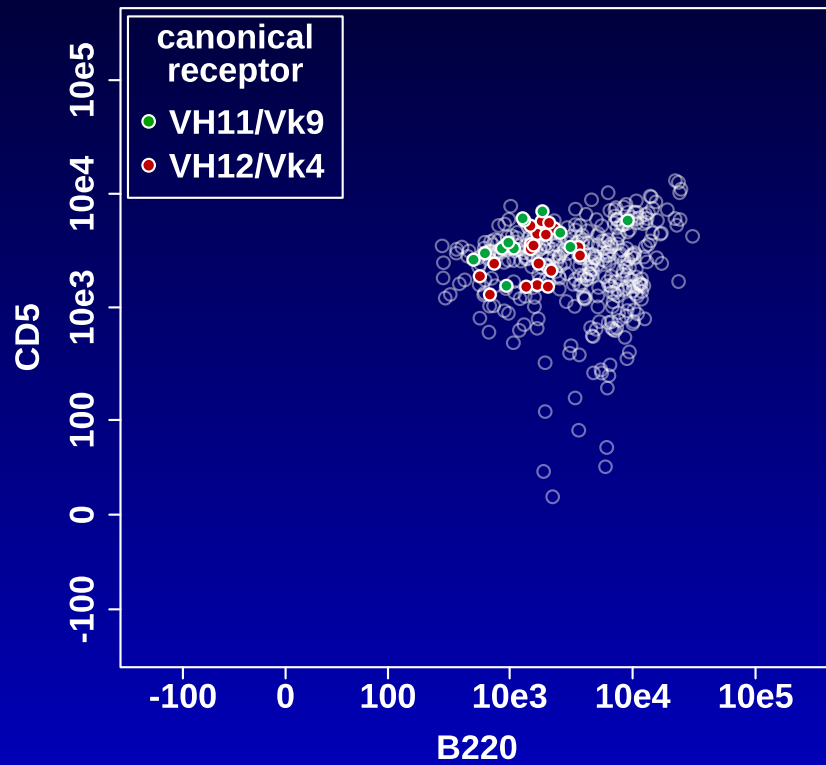
kappa (*Igk*)



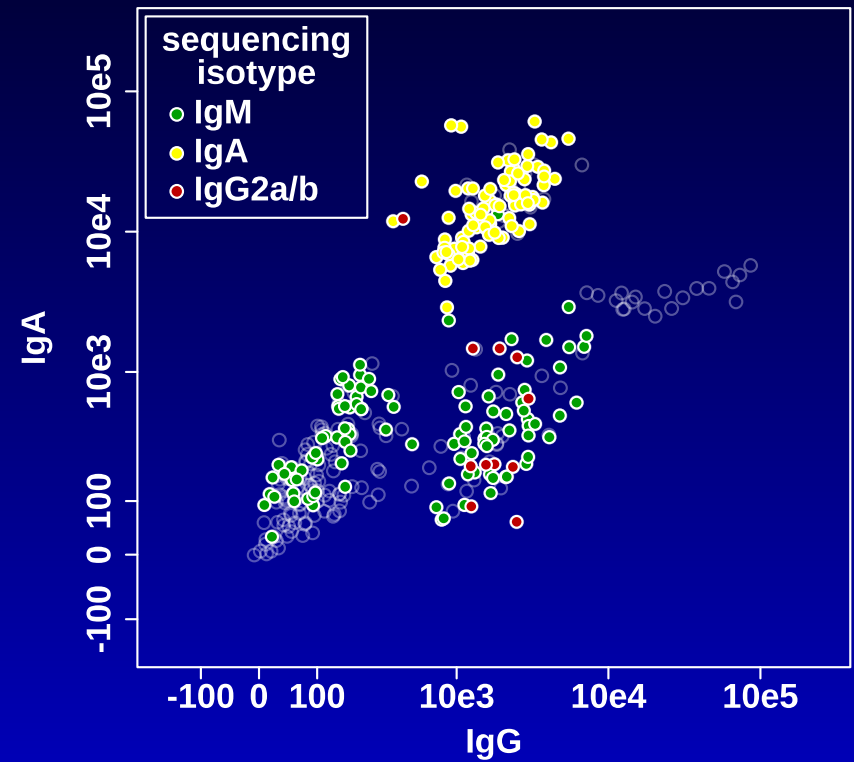
53.1%
(n=12288)

Overlay flow cytometric & sequencing data

peritoneal cavity

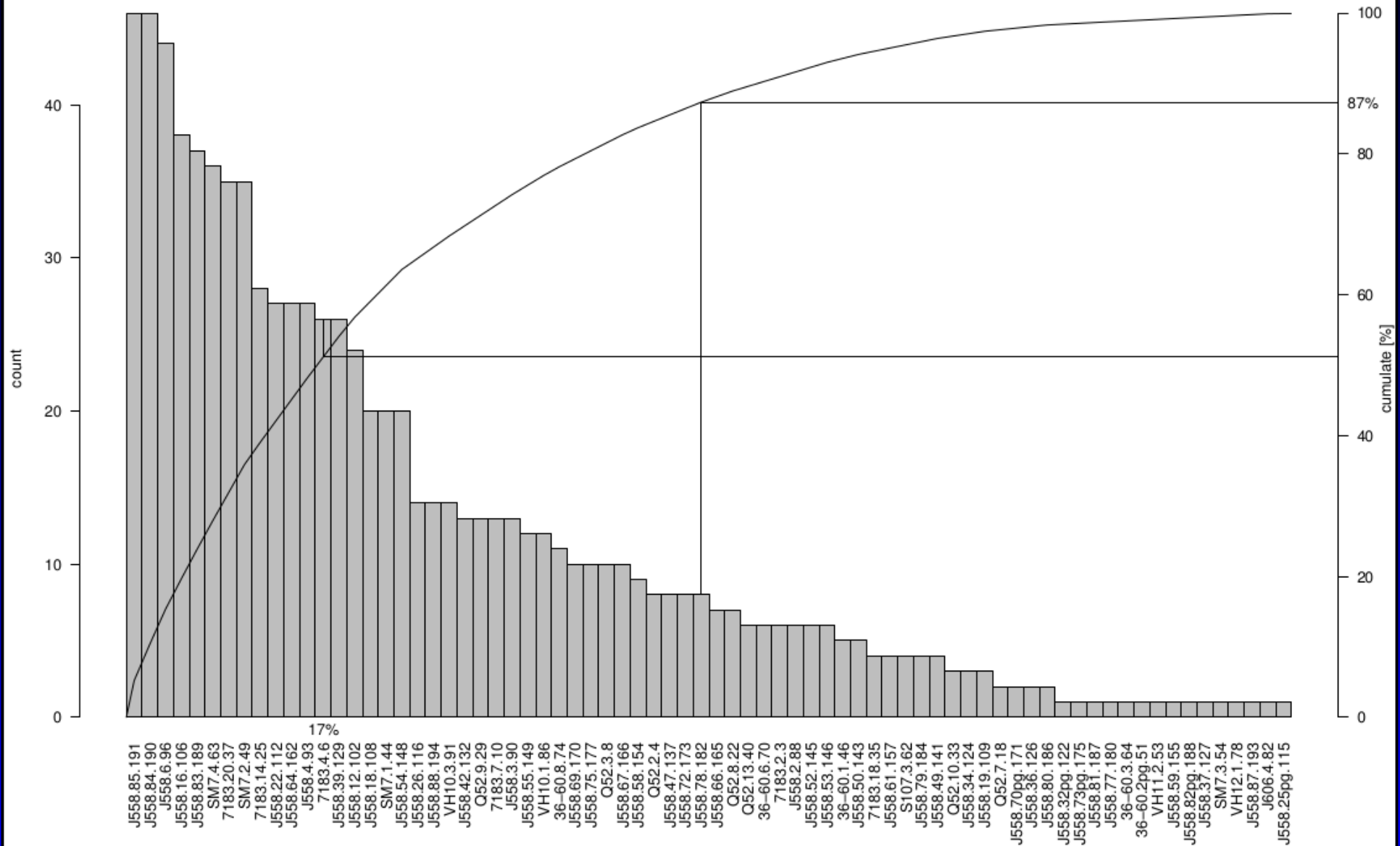


bone marrow

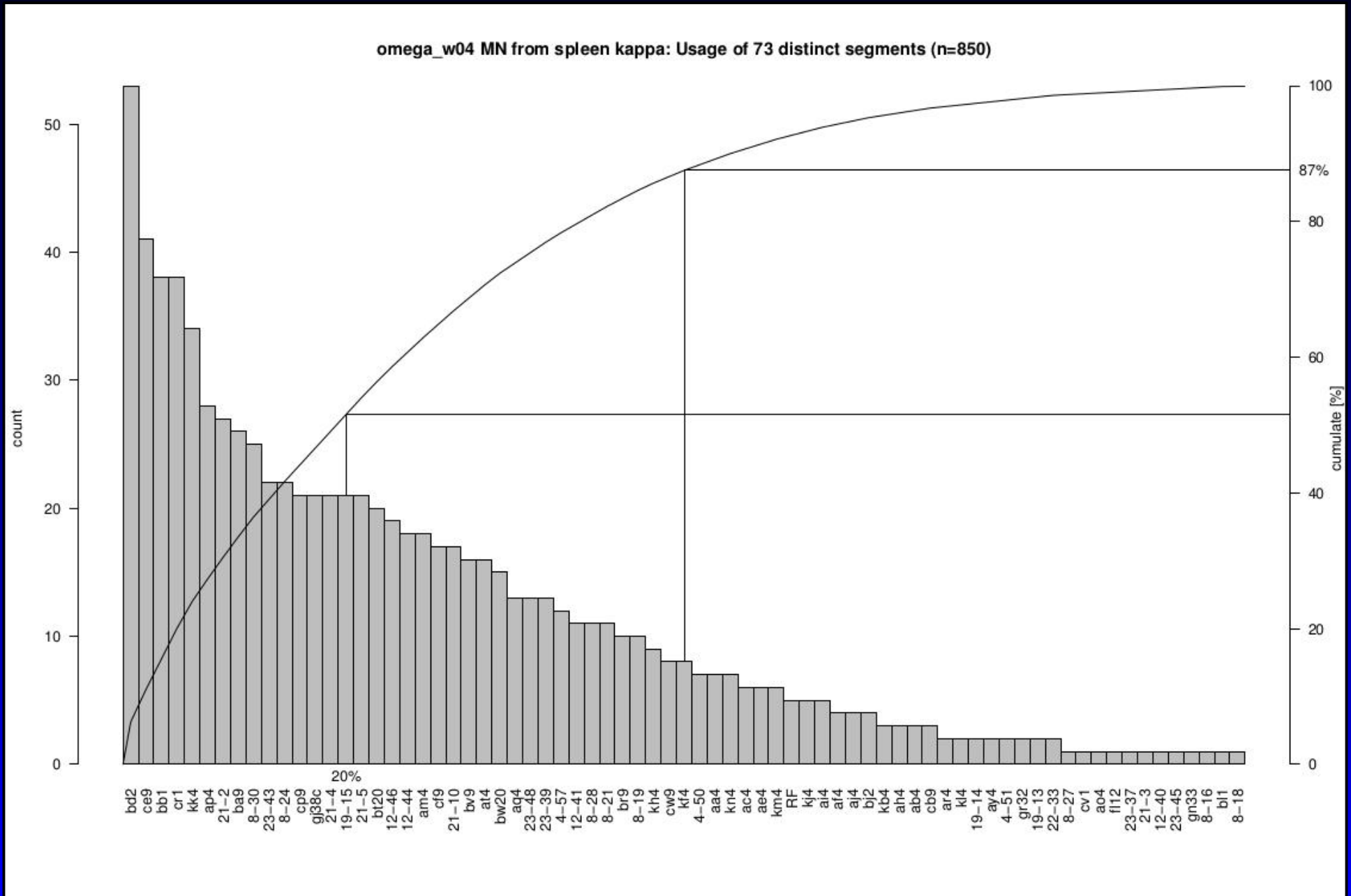


Igh-V segment usage in mature naive B cells

omega_w04 MN from spleen heavy: Usage of 74 distinct segments (n=884)

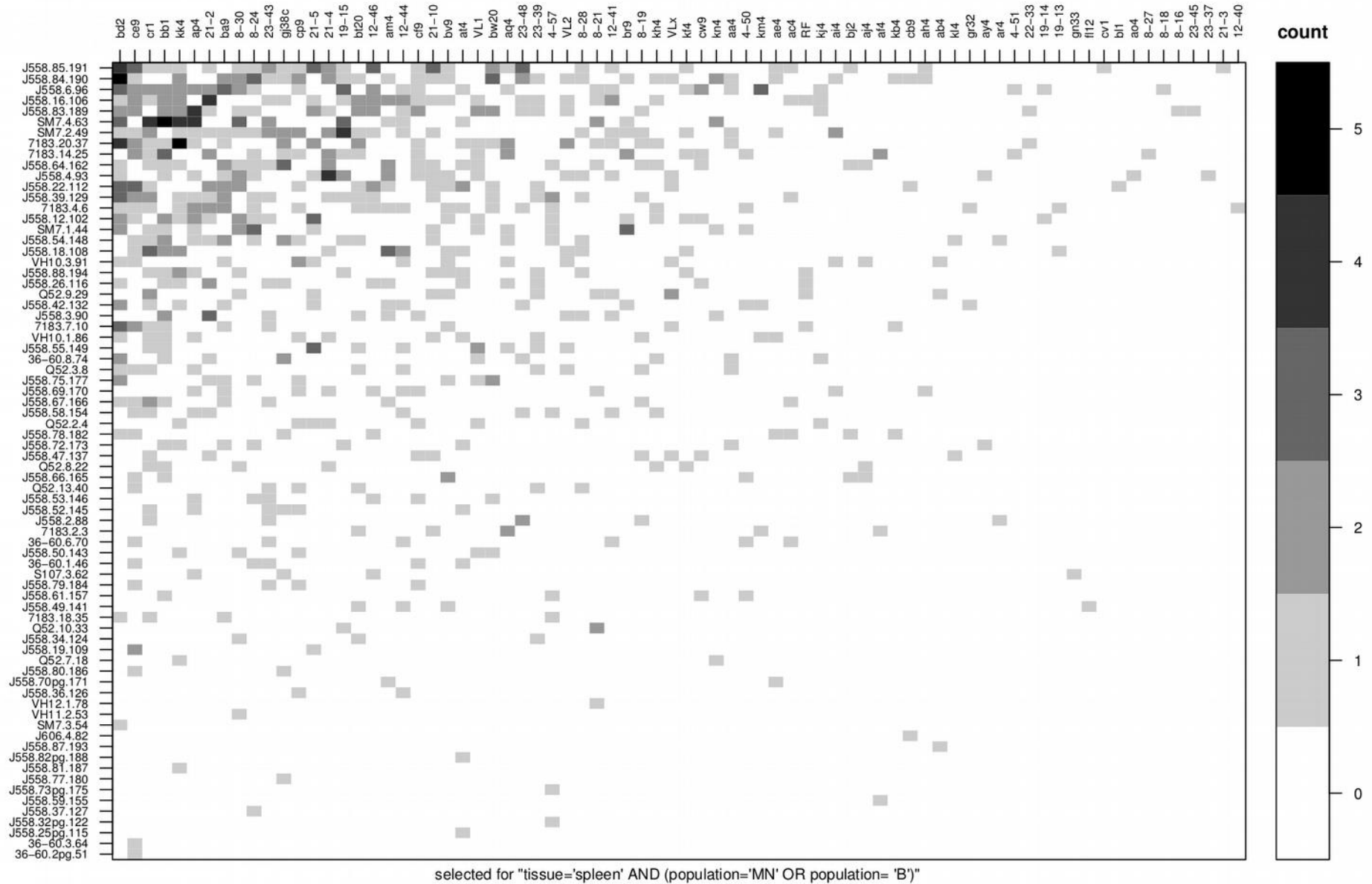


Igk-V segment usage in mature naive B cells

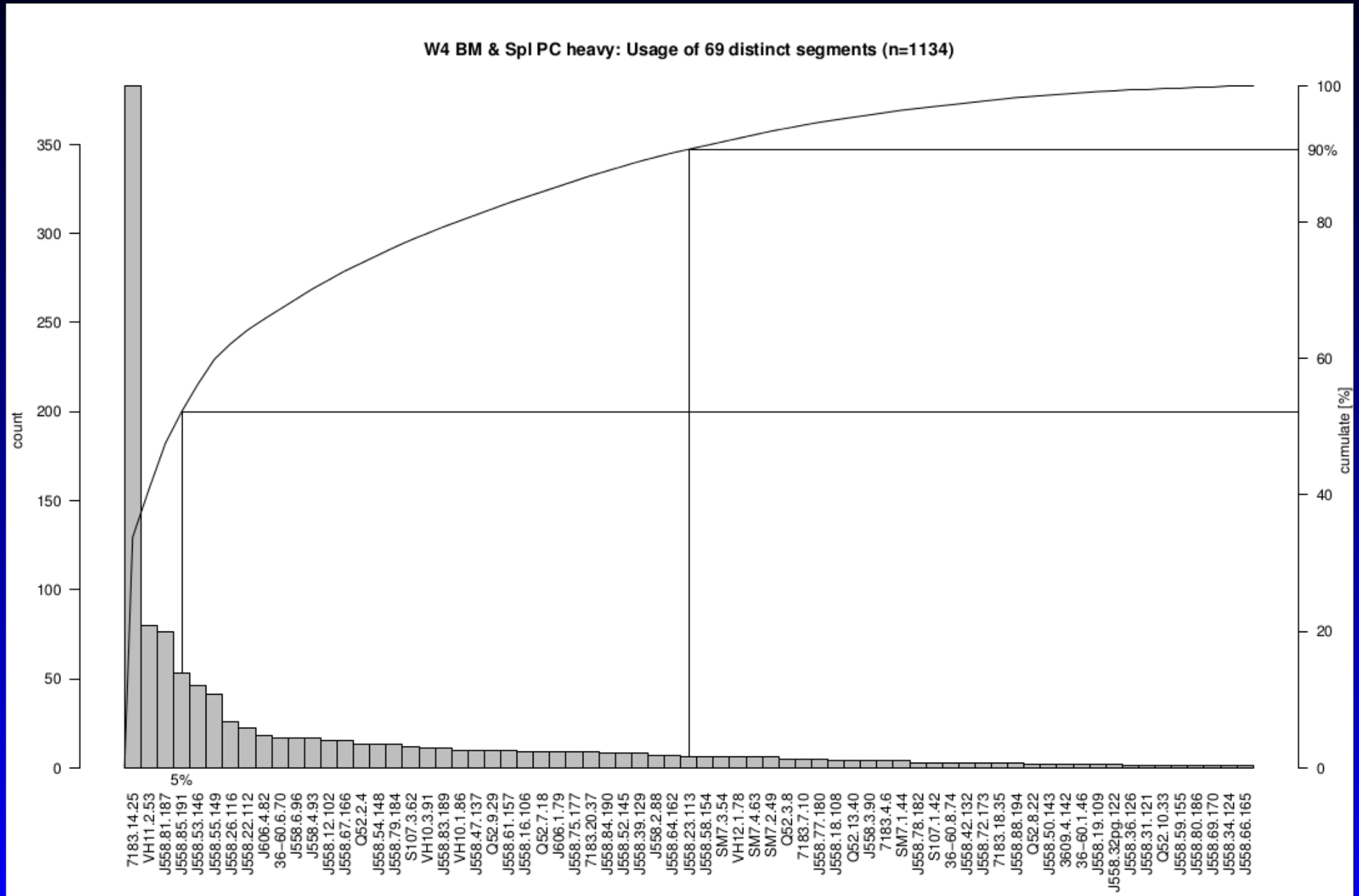


Igh-V/Igk-V segment pairing in mature naive B cells

omega_w04 (n=884)

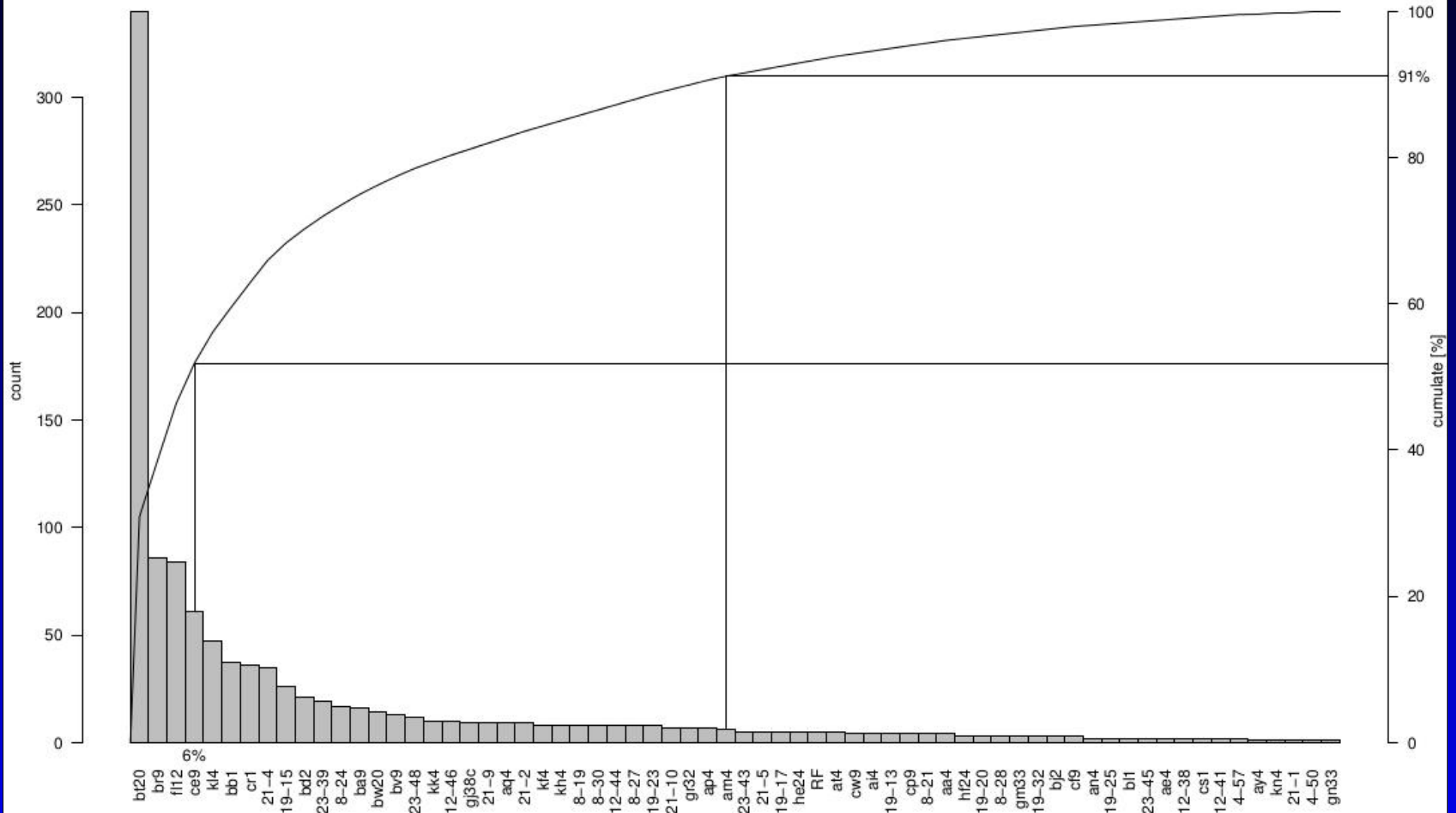


Igh-V segment usage in plasma cells



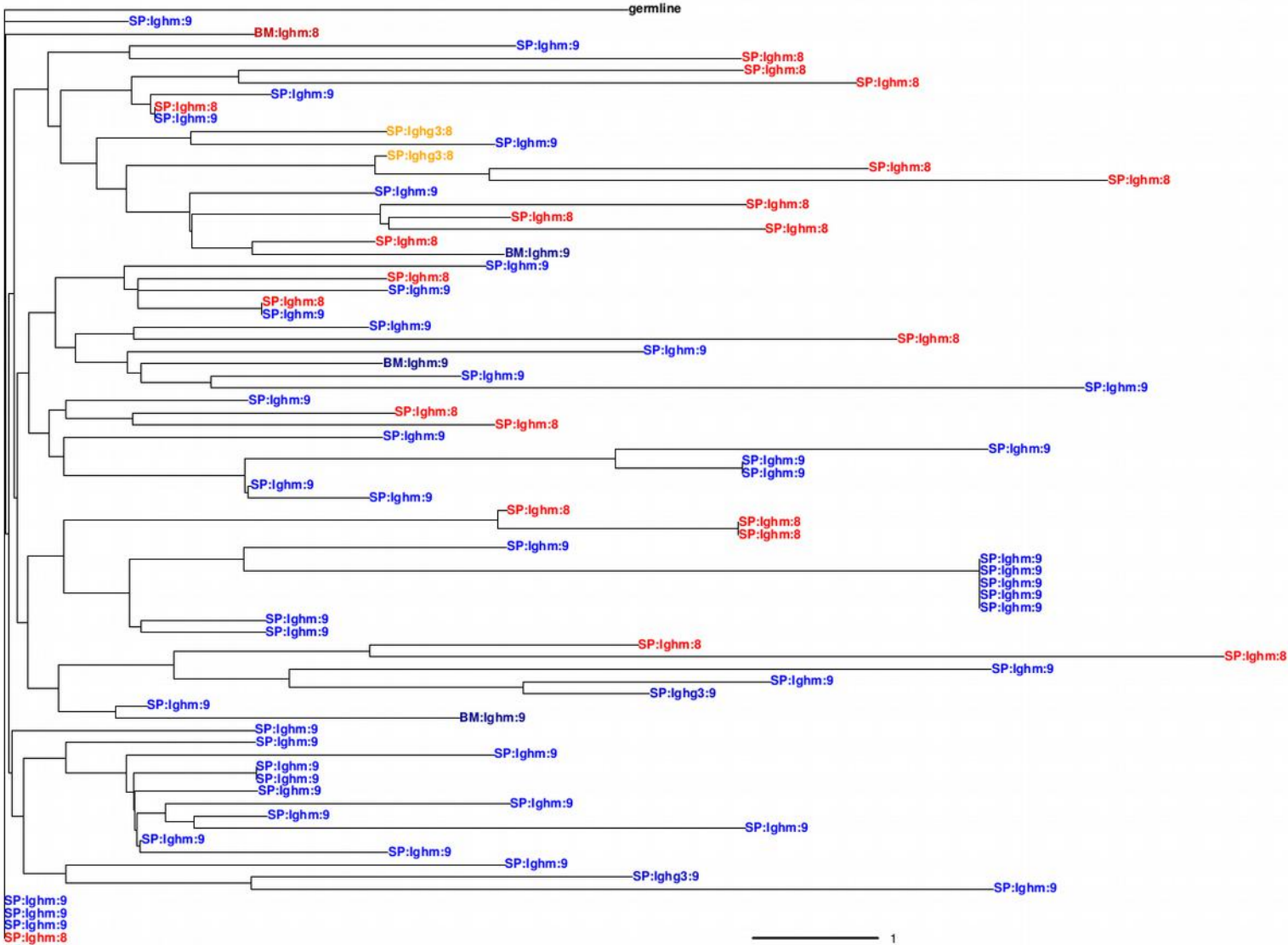
Igk-V segment usage in plasma cells

W4 BM & Spl PC kappa: Usage of 66 distinct segments (n=1101)



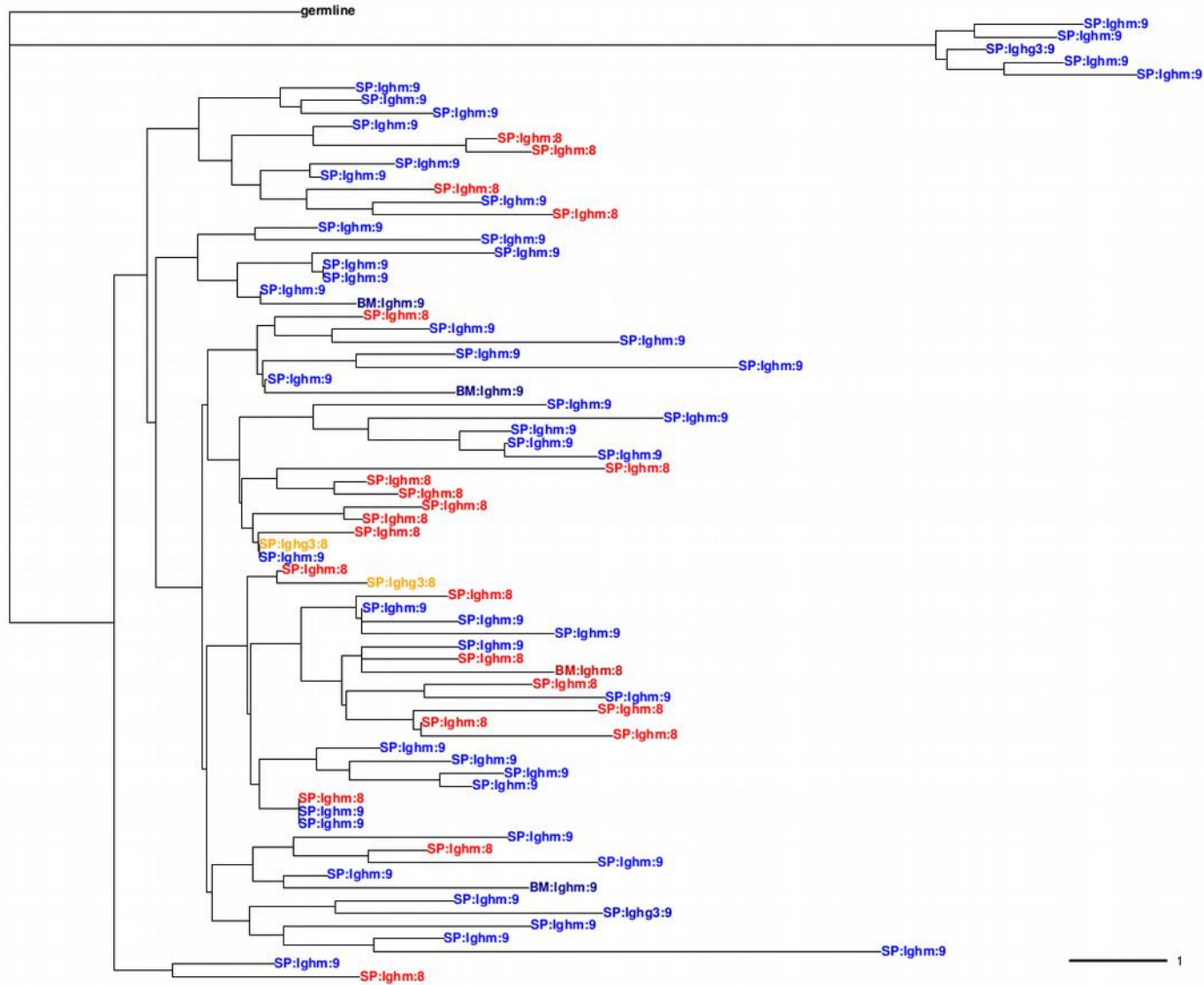
Phylogeny of a PC cluster (J558.81.187:f112) (VH only)

Plasma cells, bone marrow and spleen. Clones: J558.81.187:JH2:16:f112:JK2:9and8, count total 76, tree on heavy sequence

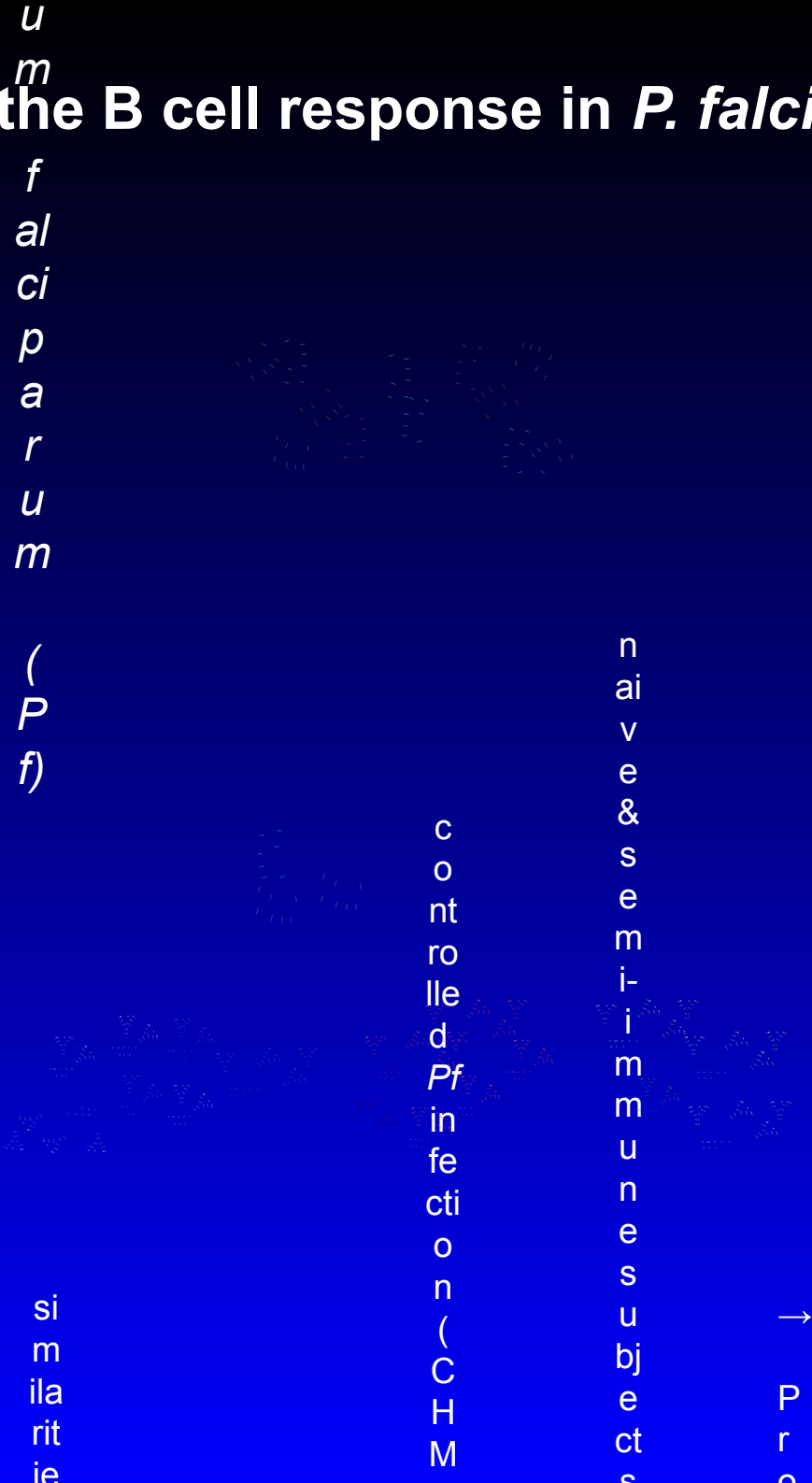


Phylogeny of a PC cluster (J558.81.187:f112) (*Igk-V* only)

Plasma cells, bone marrow and spleen. Clones: J558.81.187:JH2:16:f112:JK2:9and8, count total 76, tree on kappa sequence without CDR3



Diversity of the B cell response in *P. falciparum* infection

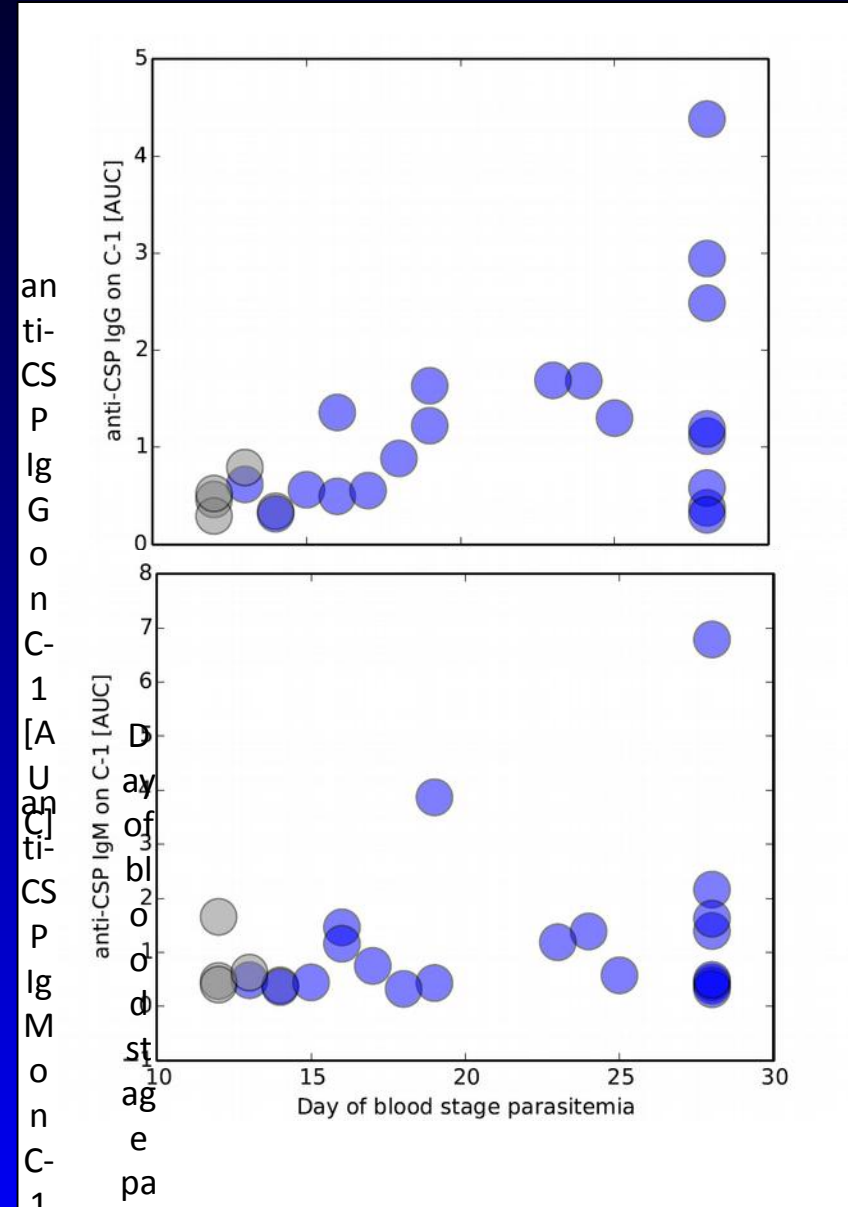
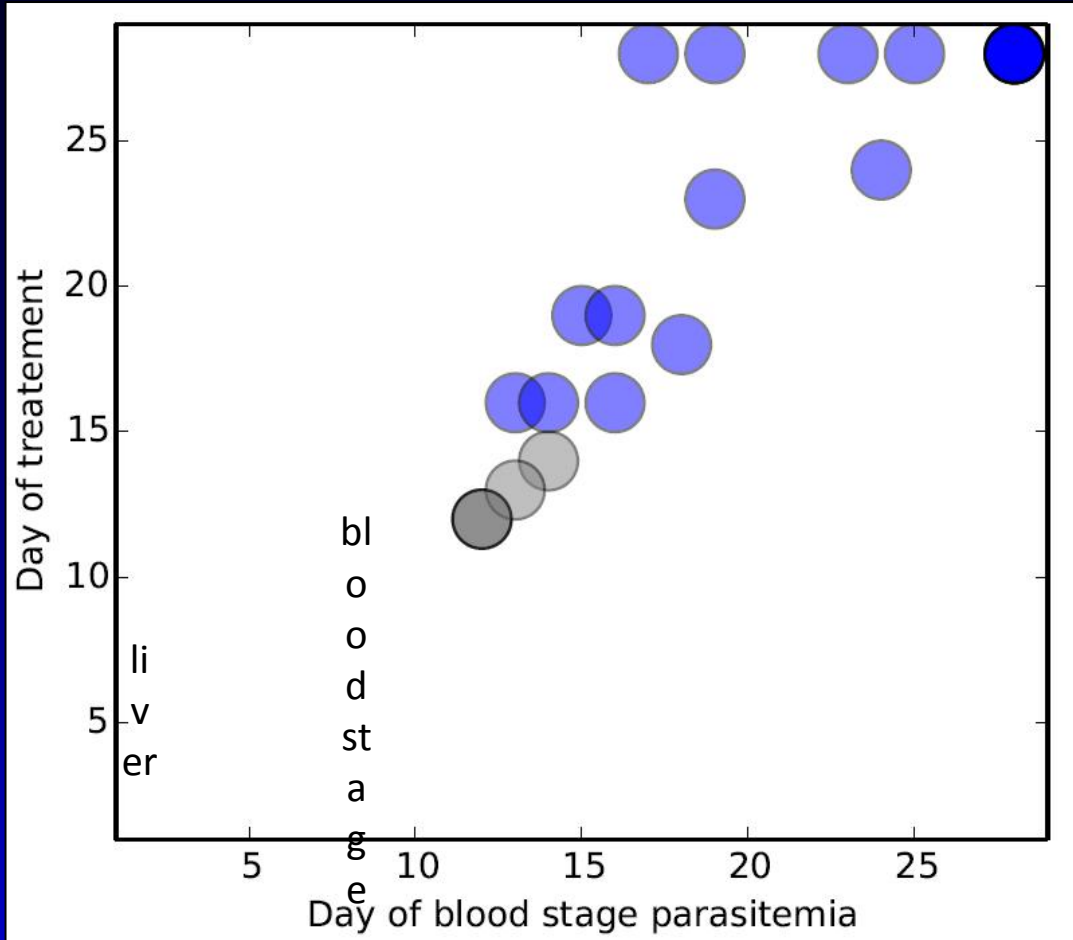


u
m
f
a
l
c
i
p
a
r
u
m

(
P
f)

s
i
m
i
l
a
r
i
t
y

CHMI in Gabonese subjects shows different levels of protection

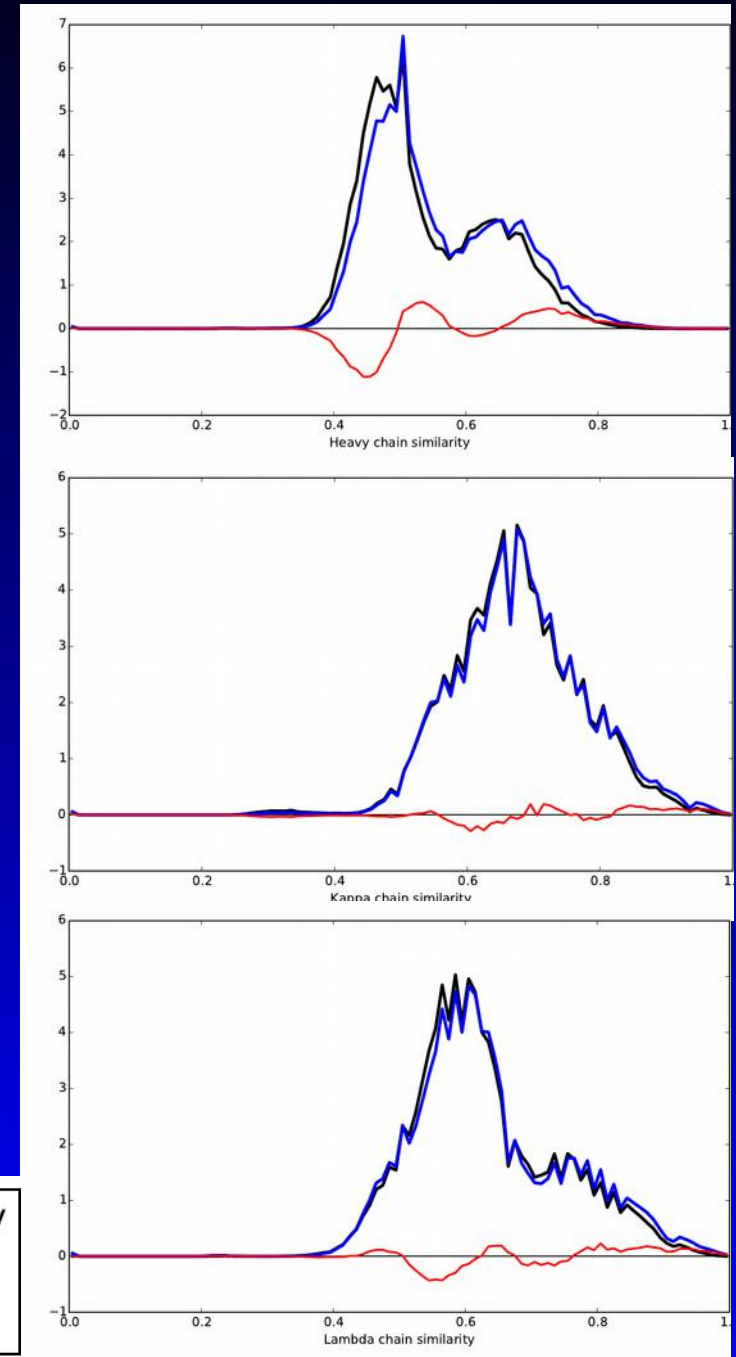


32
 20
 Sp
 t
 r
 o
 G
 a
 b
 s
 é
 t
 r
 o
 h
 o
 n
 s
 a
 m
 p
 l
 i
 s
 S
 a
 m
 p
 l
 i
 s

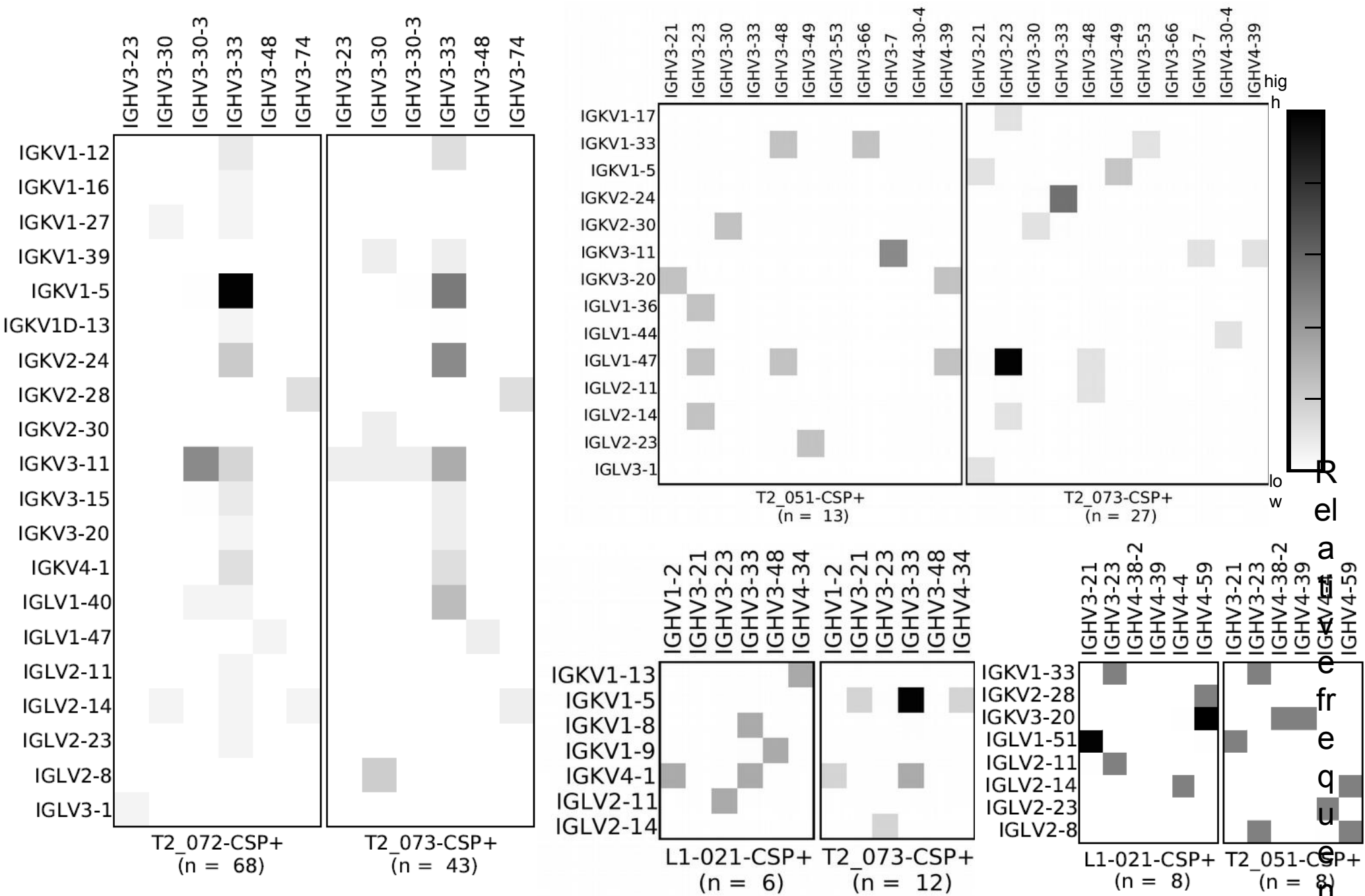
→

Similarity of the antibody response in CHMI donors

Quantification of si



Similarity of the antibody response in CHMI donors



sciReptor is free/open software

- licenced as Affero GPL3
- hosted at Github:



<https://github.com/b-cell-immunology>

Thank you for your attention!